

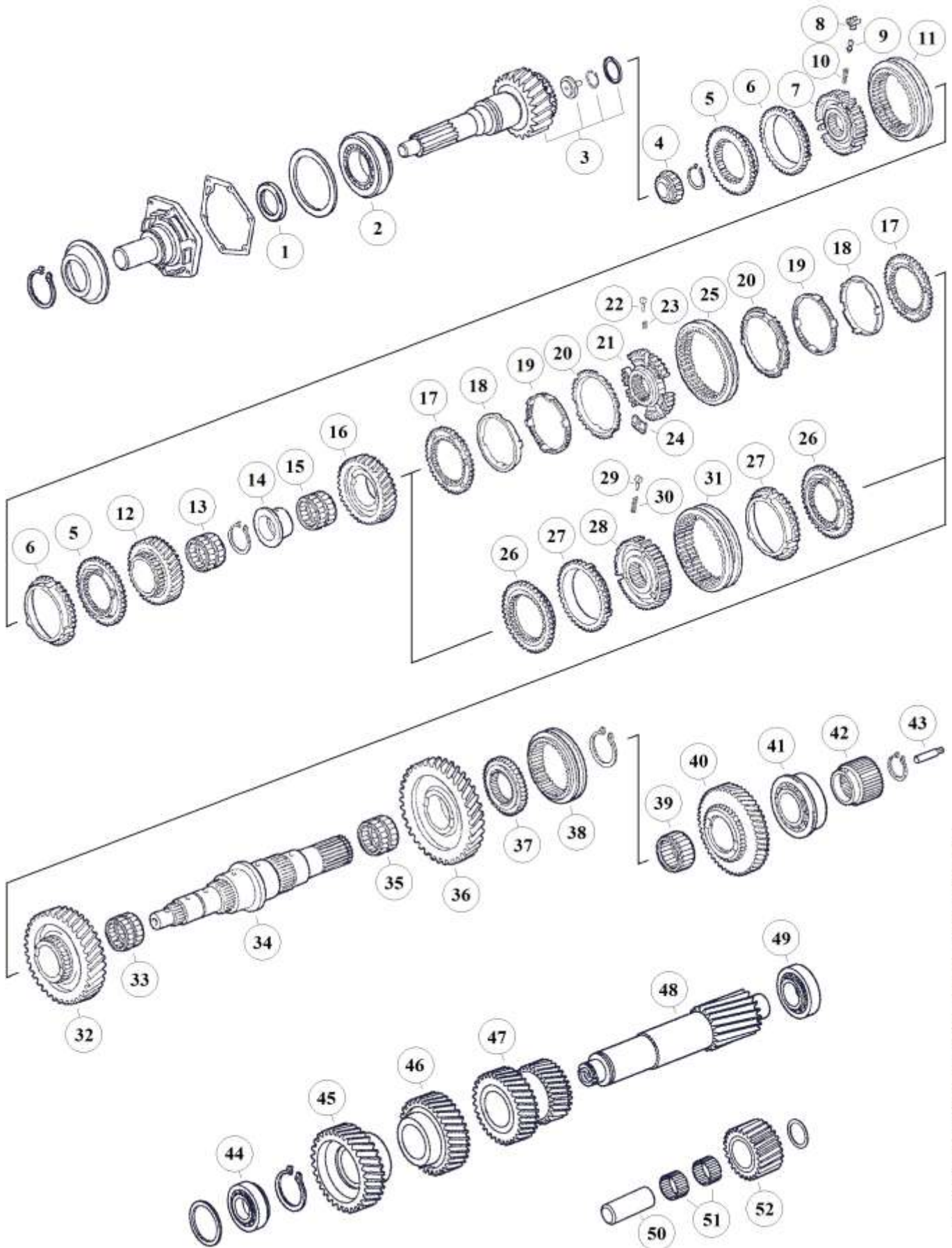
**Suitable to:  
ZF 9S109 EcoMid**

**DAF**



# HIGH END GEARS

## Parts for gearbox: 9S109



The stated names, reference numbers, symbols, pictures, models and descriptions of truck manufacturers serve only for comparison purposes. It is by no means allowed to use as some original reference towards vehicle owners.

### RATIOS:

I	10,24 - 0,74	III	12,91 - 1,00
II	10,25 - 0,79	IV	12,92 - 1,00

Fig.	MAET-No.	DAF-No.	ZF-No.	DESCRIPTION	Q-Ty.	Ratio	Note	9S109 (1304)
1		699617	0750 111 149	Oil Seal D.48x65x10	x1			■
2		699615	0750 117 079	Bearing D.66,6x117,4x30,1	x1			■
3			1304 202 170	Input Shaft 27 T.	x1	I&II		■
3	00.109.001		1304 202 171	Input Shaft 27 T.	x1	I&II		■
3			1304 202 172	Input Shaft 27 T.	x1	I&II		■
3			1304 202 173	Input Shaft 27 T.	x1	I&II		■
3			1304 202 180	Input Shaft 27 T.	x1	I&II		■
3			1304 202 245	Input Shaft 27 T.	x1	I&II		■
3			1304 202 168	Input Shaft 26 T.	x1	III&IV		■
3			1304 202 175	Input Shaft 26 T.	x1	III&IV		■
3	00.109.101	1289000	1304 202 177	Input Shaft 26 T.	x1	III&IV		■
3			1304 202 178	Input Shaft 26 T.	x1	III&IV		■
4		1197999	0735 371 748	Needle Cage D.32x29,5	x1			■
5	00.109.008	1317295	1304 304 660	Coupling Body	x2			■
6	00.109.054	699659	1304 304 014	Synchronizer Ring	x2		old	■
6	00.109.254	1363793	1304 304 683	Synchronizer Ring	x2		new	■
7	00.109.032	699660	1304 304 051	Synchronizer Hub	x1			■
8	00.109.080	171350	1238 304 394	Pressure Block	x3			■
9	00.109.075	171351	1249 304 222	Pressure Pin	x3			■
10	00.175.205	171349	0732 040 409	Pressure Spring D.6,5x23,5	x3			■
11	00.109.028	68516	6002 305 515	Sliding Sleeve	x1			■
12		1212166	1304 304 472	Gear 3rd sp. 23 T.	x1	I		■
12			1304 304 365	Gear 3rd sp. 24 T.	x1	II		■
12		1375260	1304 304 571	Gear 3rd sp. 27 T.	x1	III		■
12	00.109.031	68515	1304 304 500	Gear 3rd sp. 25 T.	x1	IV		■
13		68514	0735 321 011	Needle Cage 60x68x23	x1			■
14	00.109.029	699651	1304 304 050	Bushing	x1			■
15		699652	0750 115 227	Needle Cage D.75x83x40	x1			■
16		1212165	1304 304 367	Gear 2nd sp. 31 T.	x1	I&II		■
16		1375259	1304 304 570	Gear 2nd sp. 30 T.	x1	III		■
16	00.109.022	68513	1304 304 499	Gear 2nd sp. 29 T.	x1	IV		■
17	00.119.206	1296007	1304 304 623	Synchronizer Ring Disk	x2		(#)	■
18	00.119.049	1268584	1290 304 350	Intermediate Cone	x2		(#)	■
19	00.119.228	1433230	6002 306 154	Intermediate Synchronizer Ring	x2		(#)	■
20	00.119.254	1268586	1290 304 438	Synchronizer Ring	x2		(#)	■
21		1287309	1304 304 646	Synchronizer Hub	x1		(#)	■
22	00.151.080	68332	1297 304 436	Pressure Piece	x3		(#)	■
23	00.175.205	171349	0732 040 409	Pressure Spring D.6,5x23,5	x3		(#)	■
24	00.151.380	1300312	1312 304 159	Locking Plate	x3		(#)	■
25	00.119.228	1287575	6002 305 994	Sliding Sleeve	x1		(#)	■
26	00.109.108	699642	1304 304 408	Coupling Body	x2			■
27	00.109.154	67762	1304 304 542	Synchronizer Ring	x2		old	■
27	00.109.354	1352001	1304 304 681	Synchronizer Ring	x2		new	■
28	00.109.132	68331	1304 304 591	Synchronizer Hub	x1			■
29	00.151.080	68332	1297 304 436	Pressure Block	x3			■
30	00.175.205	171349	0732 040 409	Pressure Spring D.6,5x23,5	x3			■
31	00.109.128	68512	1304 304 597	Sliding Sleeve	x1			■
32		1212164	1304 304 471	Gear 1st sp.	x1	I		■
32			1304 304 369	Gear 1st sp. 33 T	x1	II		■

Special for DAF

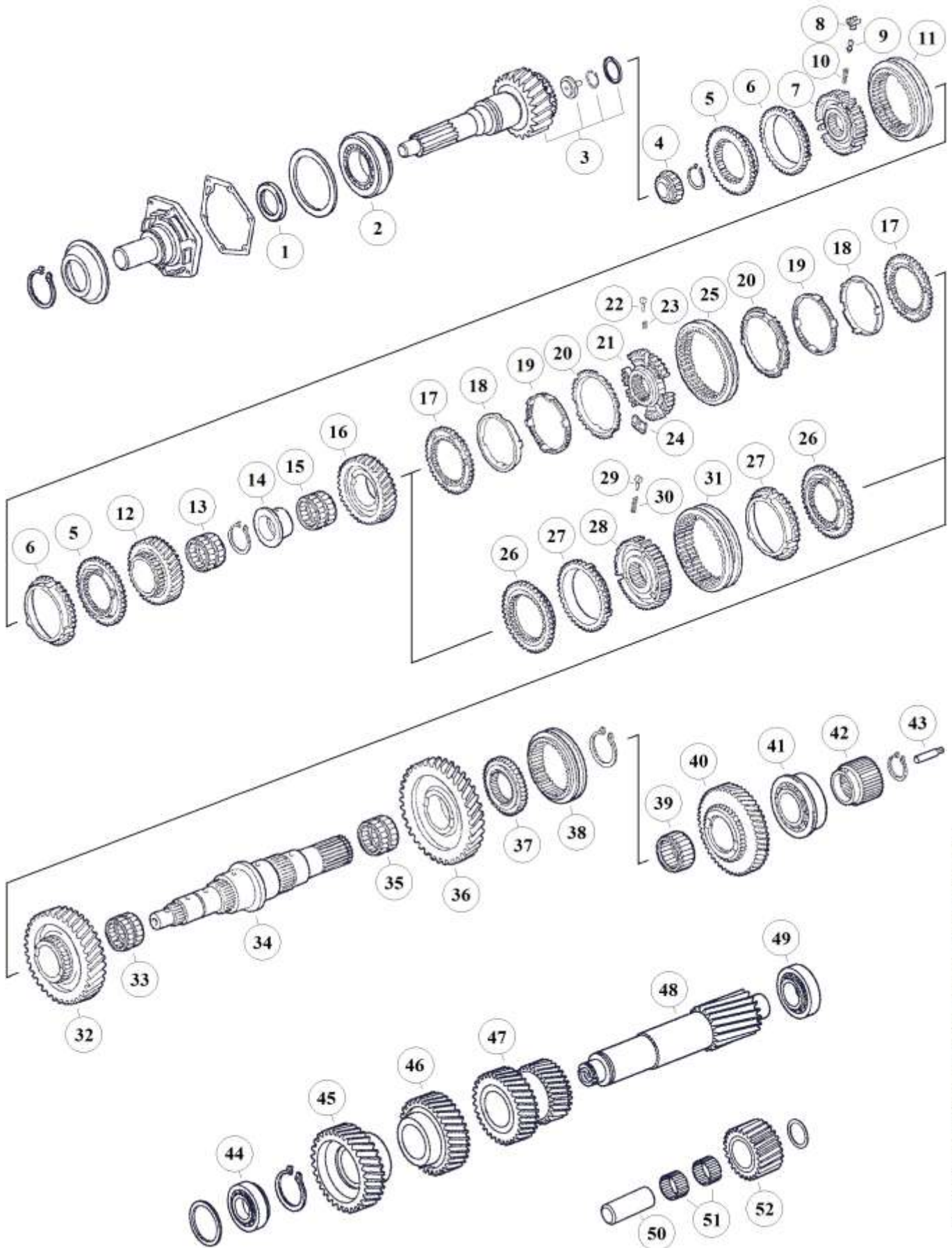
The stated names, reference numbers, symbols, pictures, models and descriptions of truck manufacturers serve only for comparison purposes. It is by no means allowed to use as some original reference towards vehicle owners.

NOTES:

(#) Only for DAF Models. DO NOT MIX Single Cone w. Double Cone Synch.

# HIGH END GEARS

## Parts for gearbox: 9S109



The stated names, reference numbers, symbols, pictures, models and descriptions of truck manufacturers serve only for comparison purposes. It is by no means allowed to use as some original reference towards vehicle owners.

### RATIOS:

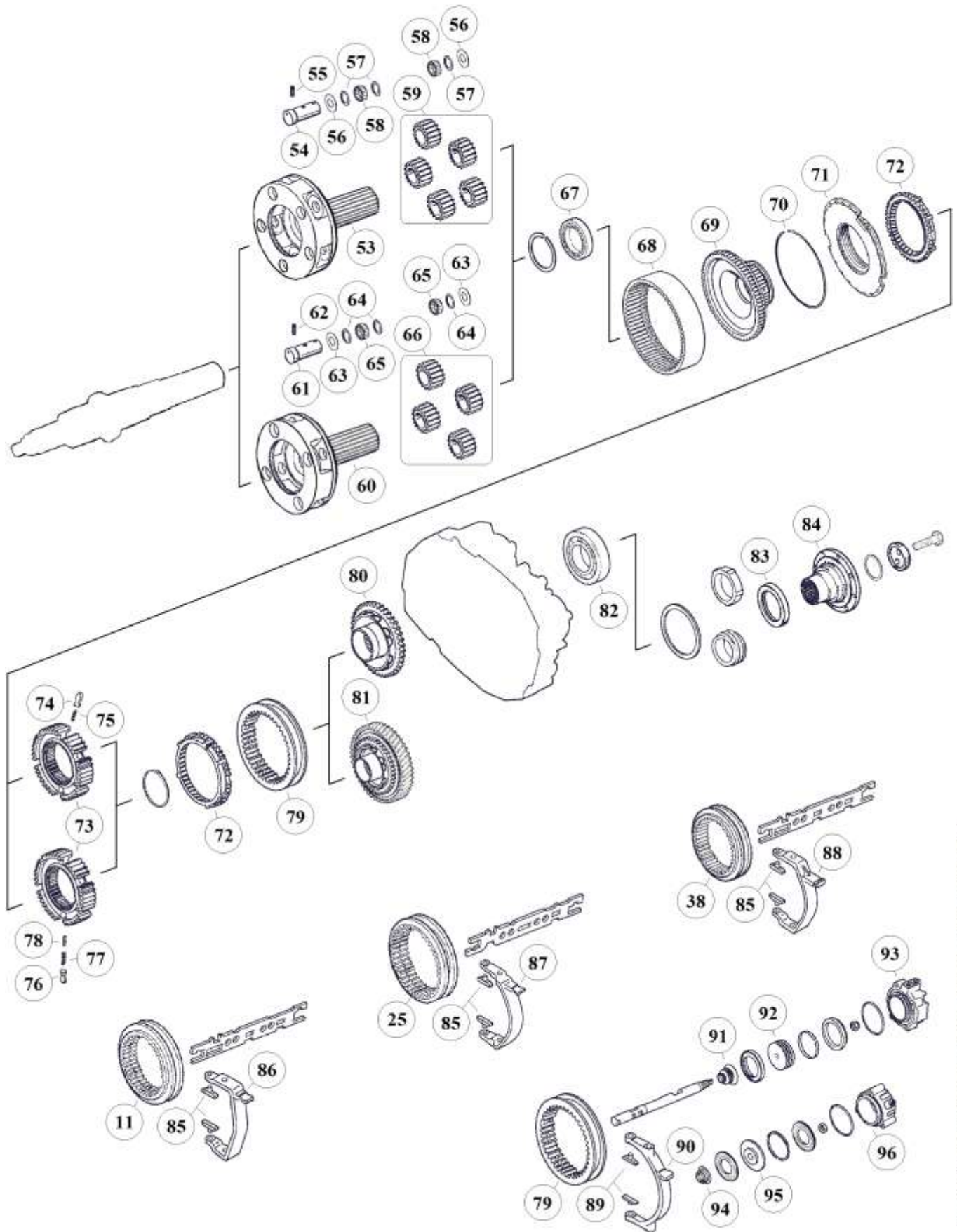
I	10,24 - 0,74	III	12,91 - 1,00
II	10,25 - 0,79	IV	12,92 - 1,00



Fig.	MAET-No.	DAF-No.	ZF-No.	DESCRIPTION	Q-Ty.	Ratio	Note	9S109 (1304)
32		1375258	1304 304 569	Gear 1st sp. 33 T	x1	III		■
32	00.109.034	68511	1304 304 498	Gear 1st sp. 33 T.	x1	IV		■
33		699640	0735 320 816	Needle Cage D.75x83x23	x1			■
34	00.109.015	699627	1304 304 449	Main Shaft	x1			■
35		100181	0735 320 500	Needle Cage D.75x83x35	x1			■
36		1212162	1304 304 428	Low Gear sp. 38 T.	x1	I&II		■
36			1304 304 543	Low Gear sp.	x1	III		■
36		69397	1304 304 426	Low Gear sp. 37 T.	x1	IV		■
37	00.109.232	68508	1304 304 443	Synchronizer Hub	x1			■
38	00.109.228	68523	1304 304 444	Sliding Sleeve	x1			■
39		699635	0750 115 225	Needle Cage D.60x68x39	x1			■
40		1212163	1304 304 437	Reverse Gear 35 T.	x1	I&II		■
40			1304 304 553	Reverse Gear	x1	III		■
40	00.109.035	68509	1304 304 435	Reverse Gear 32 T.	x1	IV		■
41		1305820	0735 371 605	Bearing D.50,8x104,7x30,1	x1			■
42	00.109.044	68510	1304 304 448	Sun Gear 34 T.	x1			■
43		1246838	1312 304 150	Oil Tube	x1			■
44		1197998	0735 371 749	Bearing D.40x80x32	x1			■
45	00.109.012	1212161	1304 303 285	Constant Gear 33 T.	x1	I&II		■
45	00.109.112	68339	1304 303 272	Constant Gear 36 T.	x1	III&IV		■
46		1212160	1304 303 210	Gear 3rd sp. 38 T.	x1	I		■
46			1304 303 171	Gear 3rd sp. 37 T.	x1	II		■
46		1375008	1304 303 287	Gear 3rd sp. 28 T.	x1	III		■
46	00.109.025	68506	1304 303 244	Gear 3rd sp. 27 T.	x1	IV		■
47	00.109.020	1212159	1304 303 209	Twin Gear 1st-2nd 28-21 T.	x1	I		■
47			1304 303 172	Twin Gear 1st-2nd	x1	II		■
47		1375007	1304 303 286	Twin Gear 1sp-2nd	x1	III		■
47	00.109.120	68505	1304 303 243	Twin Gear 1st-2nd 19-23 T.	x1	IV		■
48	00.109.227	1212173	1304 303 269	Counter Shaft 16 T.	x1	I&II		■
48	00.109.127	1375006	1304 303 268	Counter Shaft 14 T.	x1	III		■
48	00.109.027	68338	1304 303 267	Counter Shaft 14 T.	x1	IV		■
49		586693	0750 117 083	Bearing D.50,8x95,2x27,7	x1			■
50	00.175.039	699607	1304 305 030	Reverse Idler Pin	x1			■
51		699608	0735 358 192	Needle Cage D.40x60x26	x2			■
52	00.119.029		1304 305 043	Reverse Idler Gear 22 T.	x1	I&II		■
52		1363719	1304 305 045	Reverse Idler Gear	x1	III		■
52		1262881	1304 305 044	Reverse Idler Gear	x1	IV		■

**Special for DAF**

The stated names, reference numbers, symbols, pictures, models and descriptions of truck manufacturers serve only for comparison purposes. It is by no means allowed to use as some original reference towards vehicle owners.



The stated names, reference numbers, symbols, pictures, models and descriptions of truck manufacturers serve only for comparison purposes. It is by no means allowed to use as some original reference towards vehicle owners.

**RATIOS:**

I	10,24 - 0,74	III	12,91 - 1,00
II	10,25 - 0,79	IV	12,92 - 1,00

Fig.	MAET-No.	DAF-No.	ZF-No.	DESCRIPTION	Q-Ty.	Ratio	Note	9S109 (1304)
53		1195925	1304 232 091	Planet Carrier	x1	(a)		■
54	00.109.202	66588	1304 332 111	Planet Pin	x5	(a)		■
55	00.119.220		0631 329 037	Lock Pin 4x26	x5	(a)		■
56	00.159.203	609490	0501 304 692	Thrust Washer 1,50	x10	(a)		■
57	00.159.204	609489	0730 103 102	Washer 1,50	x15	(a)		■
58	00.119.205	66587	0735 470 115	Needle D.5x15,30	x200	(a)		■
59	00.109.206	66518	1304 232 025	Planet Gear Set	x1	(a)		■
60	00.109.201	1301212	1304 232 095	Planet Carrier	x1	(b)		■
61	00.109.202	66588	1304 332 111	Planet Pin	x4	(b)		■
62	00.119.220		0631 329 037	Lock Pin 4x26	x4	(b)		■
63	00.159.203	609490	0501 304 692	Thrust Washer 1,50	x8	(b)		■
64	00.159.204	609489	0730 103 102	Washer 1,50	x12	(b)		■
65	00.119.205	66587	0735 470 115	Needle D.5x15,30	x160	(b)		■
66		69745	1304 232 037	Planet Gear Set	x1	(b)		■
67		699719	0735 340 080	Bearing D.70x90x10	x1		(Q)	■
67		69395	0750 116 165	Bearing D.80x110x16	x1		(R)	■
68	00.109.207	1262888	1304 332 178	Carrier Crown 86 T.	x1			■
69	00.109.204	66630	1304 332 060	Intermediate Carrier 86 T.	x1		(Q)	■
69	00.119.204	1311153	1304 332 215	Intermediate Carrier 86 T.	x1		(R)	■
70	00.119.298	69540	0730 505 140	Lock Ring	x1			■
71	00.109.208	699727	1304 233 005	Coupling Flange	x1		(Q)	■
71	00.109.308	1311173	1304 233 006	Coupling Flange	x1		(R)	■
72	00.109.210	699729	1304 333 005	Synchronizer Ring	x2		(Q) old	■
72	00.109.310		1304 333 021	Synchronizer Ring	x2		(Q) new	■
72	00.112.210	1303708	1296 333 022	Synchronizer Ring	x2		(R) old	■
72	00.151.210	1354113	1296 333 045	Synchronizer Ring	x2		(R) new	■
73	00.109.211	699728	1304 332 066	Synchronizer Hub	x1		(Q)	■
73	00.151.211	69909	1313 333 001	Synchronizer Hub	x1		(R)	■
74	00.168.075	326962	1240 304 278	Pressure Block	x6		(R)	■
75	00.168.076	326963	0732 040 385	Pressure Spring De.6x34	x6		(R)	■
76	00.168.075	326962	1240 304 278	Pressure Block	x9		(Q)	■
77	00.168.076	326963	0732 040 385	Pressure Spring De.6x34	x9		(Q)	■
78	00.168.074	326964	0732 040 386	Pressure Spring De.3x34	x9		(Q)	■
79	00.109.212	699730	1304 332 089	Sliding Sleeve	x1		(Q)	■
79	00.119.328	1311176	1304 333 011	Sliding Sleeve	x1		(R)	■
80	00.109.213	699731	1304 332 075	Coupling Body	x1		(Q)	■
80	00.119.213	1369530	1304 233 013	Coupling Body	x1		(R)	■
81	00.109.313	1311177	1304 232 085	Retarder Gear	x1		(R) w. Ret.	■
82		699706	0750 116 048	Bearing D.78x130x25	x1		(Q)	■
82			0750 116 197	Bearing D.80x140x26	x1		(R)	■
83		1262887	0734 319 439	Oil Seal D.95x115x10	x1			■
84	00.119.065	69681	1304 338 059	Output Flange D.150-4 H.	x1		(Q)	■
84			1304 338 060	Output Flange D.180-4 H.	x1		(Q)	■
84	00.119.265	69680	1304 338 050	Output Flange D.180-4 H.	x1		(Q)	■
84			1304 338 053	Output Flange D.180-8 H.	x1		(Q)	■
84	00.119.465	1209717	1304 338 052	Output Flange D.180-10 H.	x1		(Q)	■
84			1304 338 067	Output Flange D.204-4 H.	x1		(Q)	■
84	00.119.565		1304 338 056	Output Flange D.204-4 H.	x1		(Q)	■
84			1304 338 109	Output Flange D.180-4 H.	x1		(R)	■

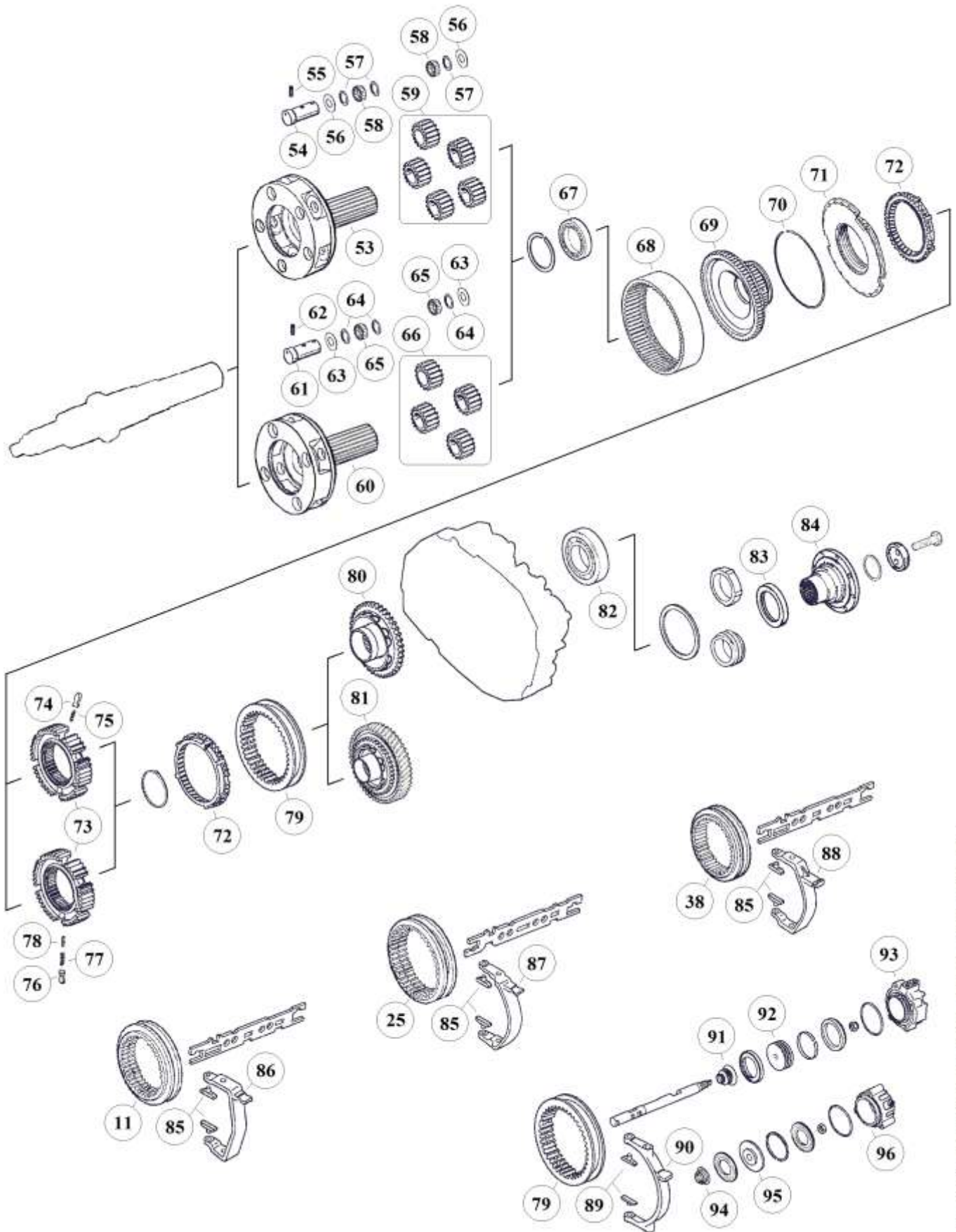
Special for DAF

The stated names, reference numbers, symbols, pictures, models and descriptions of truck manufacturers serve only for comparison purposes. It is by no means allowed to use as some original reference towards vehicle owners.

NOTES:

(a)	5 Planet Version	(Q)	Use only with (Q)-Parts. DO NOT MIX
(b)	4 Planet Version	(R)	Use only with (R)-Parts. DO NOT MIX





The stated names, reference numbers, symbols, pictures, models and descriptions of truck manufacturers serve only for comparison purposes. It is by no means allowed to use as some original reference towards vehicle owners.

**RATIOS:**

I	10,24 - 0,74	III	12,91 - 1,00
II	10,25 - 0,79	IV	12,92 - 1,00



Fig.	MAET-No.	DAF-No.	ZF-No.	DESCRIPTION	Q-Ty.	Ratio	Note	9S109 (1304)
84	00.119.765	1142221	1304 338 097	Output Flange D.180-4 H.	x1		(R)	■
85	00.109.180	689470	1290 306 066	Sliding Pads	x6		(Bronze)	■
86	00.119.188	699666	1304 306 010	Fork	x1			■
86	00.119.288	699755	1304 306 044	Fork	x1			■
86		1212167	1304 306 096	Fork	x1			■
87	00.119.488	699754	1304 306 043	Fork	x1			■
87	00.119.388	699668	1304 306 009	Fork	x1			■
88		68518	1304 306 077	Fork	x1			■
89	00.168.059	140936	1272 334 003	Sliding Pads	x2		(Bronze)	■
90	00.119.688	699739	1304 334 039	Fork	x1		(Q)	■
90	00.119.788		1304 334 063	Fork	x1		(R)	■
91		699733	0750 112 047	Oil Seal	x1		(Q)	■
92		1299322	1304 334 072	Piston	x1		(Q)	■
93		1246832	1304 334 061	Cylinder	x1		(Q)	■
94		699733	0750 112 047	Oil Seal	x1		(R)	■
95		1369533	1315 334 041	Piston	x1		(R)	■
96		1369535	1304 334 079	Cylinder	x1		(R)	■

**Special for DAF**

The stated names, reference numbers, symbols, pictures, models and descriptions of truck manufacturers serve only for comparison purposes. It is by no means allowed to use as some original reference towards vehicle owners.



**NOTES:**

(a)	5 Planet Version	(Q)	Use only with (Q)-Parts. DO NOT MIX
(b)	4 Planet Version	(R)	Use only with (R)-Parts. DO NOT MIX

# HIGH END GEARS