

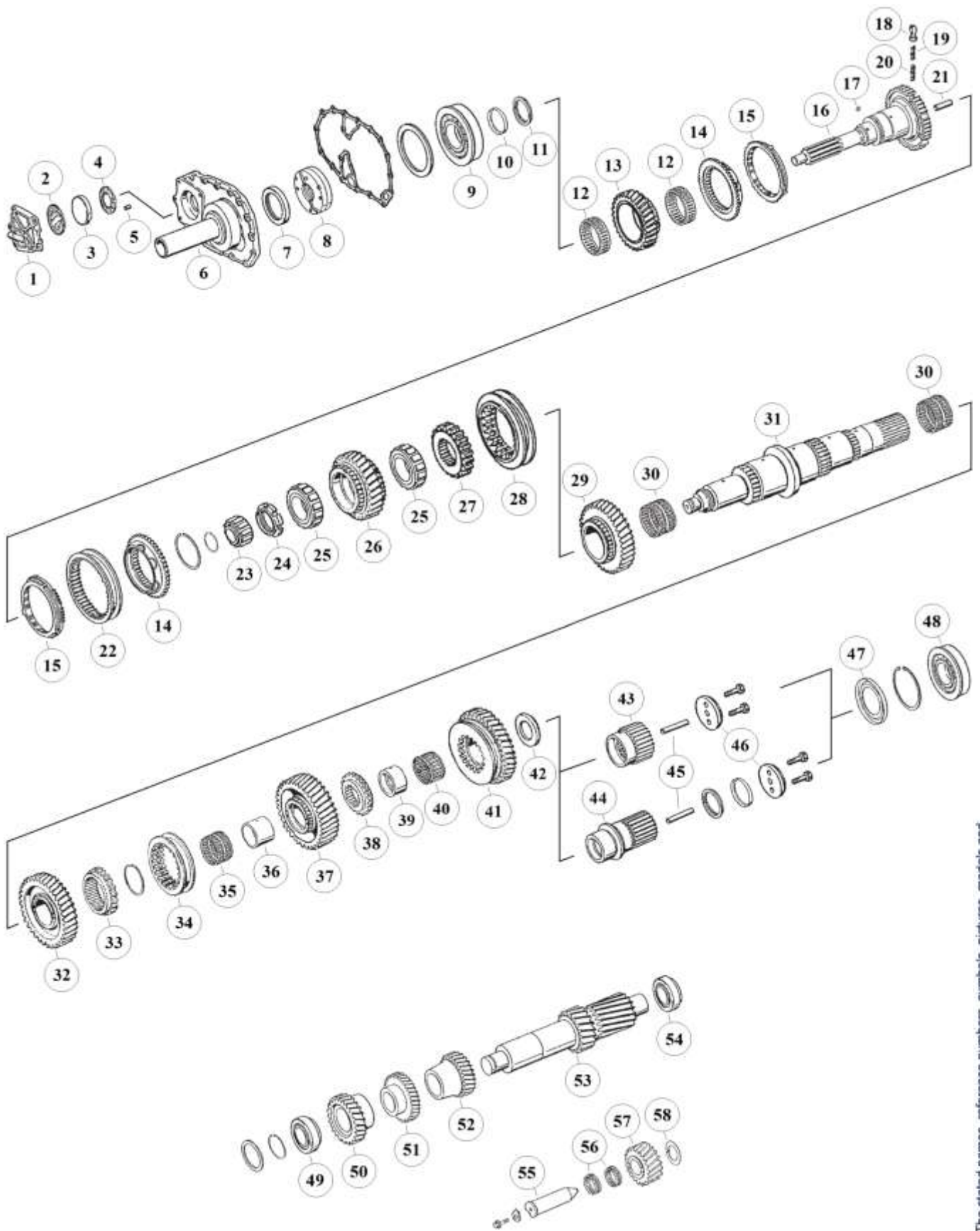
**Suitable to:  
ZF 16K160 EcoSplit**

**DAF**



# HIGH END GEARS

## Parts for gearbox: 16K160



The stated names, reference numbers, symbols, pictures, models and descriptions of truck manufacturers serve only for comparison purposes. It is by no means allowed to use as some original reference towards vehicle owners.

RATIOS:

16K160 (1297)	I: 11,46 - 0,85	II: 13,68 - 1,00	III: 14,29 - 0,82
---------------	-----------------	------------------	-------------------

Fig.	MAET-No.	DAF-No.	ZF-No.	DESCRIPTION	Q-Ty.	Ratio	Note	16K160 (1297)
1			1295 303 031	Cover	x1			■
2			0750 190 012	Disk	x1			■
3			1268 303 062	Piston	x1			■
4			0731 302 032	Pin	x1			■
5			1268 203 059	Washer	x1			■
6		692071	1297 302 013	Front Cover	x1			■
7		609458	0750 111 002	Oil Seal D.48x75x8	x1			■
8	00.116.024	692203	1295 202 041	Oil Pump	x1			■
9		692179	0750 118 131	Bearing D.80x150x27,5	x1			■
10	00.159.005	609456	0730 061 816	Washer	x1			■
10	00.169.105	698621	0730 062 579	Washer S.4,20 mm	x1			■
11	00.113.112	609454	0730 103 244	Split Ring T.4,30 mm S.4,30 mm	x1		(d)	■
11		692202	0730 103 935	Split Ring T.3,80 mm S.3,80 mm	x1		(d)	■
11	00.113.111	698685	0730 105 156	Split Ring T.4,00 mm S.4,00 mm	x1		(e)	■
11			0730 105 154	Split Ring T.3,80 mm S.3,80 mm	x1		(e)	■
12		698642	0735 320 896	Needle Cage D.88x96x29	x2			■
13	00.116.049	67076	1297 302 177	Constant Gear 30 T.	x1	I		■
13	00.116.048	66359	1297 302 176	Constant Gear 28 T.	x1	II		■
13	00.191.012	1327921	1297 302 250	Constant Gear 29 T.	x1	III		■
14	00.116.006	692073	1295 304 278	Coupling Body	x2			■
15	00.116.009	692075	1295 304 004	Synchronizer Ring	x2		old	■
15	00.116.109		1304 304 686	Synchronizer Ring	x2		new	■
16	00.191.001	691379	1297 202 004	Input Shaft	x1			■
17	00.151.094	110478	0635 470 012	Needle	x1			■
18	00.168.075	326962	1240 304 278	Pressure Block	x3			■
19	00.168.074	326964	0732 040 386	Pressure Spring De.3x34	x3			■
20	00.168.076	326963	0732 040 385	Pressure Spring De.6x34	x3			■
21			0730 062 323	Oil Tube	x1			■
22	00.116.028	692074	1295 304 002	Sliding Sleeve	x1			■
23		1336466	0750 118 038	Roller Cage D.35x68x27,5	x1			■
24	00.113.030	692208	0737 502 092	Grooved Nut M60x1,5	x1			■
25		692209	0750 118 005	Roller Cage D.63x97,5x34,8	x2			■
26	00.116.113		1297 304 128	Gear 4th sp. 28 T.	x1	I		■
26	00.116.013		1297 304 127	Gear 4th sp. 30 T.	x1	II		■
26	00.116.513	67568	1297 304 258	Gear 4th sp. 29 T.	x1	III		■
27	00.116.030	67566	1297 304 188	Synchronizer Hub	x1			■
28	00.116.027	67567	1297 304 120	Sliding Sleeve	x1			■
29	00.116.131	67565	1297 304 116	Gear 3rd sp. 32 T.	x1	I&III		■
29	00.116.031		1297 304 115	Gear 3rd sp. 34 T.	x1	II		■
30		692205	0735 320 418	Needle Cage D.82x90x49	x2			■
31	00.116.015		1297 304 179	Main Shaft	x1	I&II		■
31			1297 304 264	Main Shaft	x1	III		■
32	00.116.122		1297 304 113	Gear 2nd sp. 37 T.	x1	I&III		■
32	00.116.022		1297 304 112	Gear 2nd sp. 38 T.	x1	II		■
33	00.116.032	67560	1295 304 235	Synchronizer Hub	x1			■
34	00.116.033	67561	1297 304 119	Sliding Sleeve	x1			■
35		67563	0735 320 568	Needle Cage D.82x90x53	x1			■
36	00.116.085		1297 304 055	Bushing	x1			■
37	00.116.234		1297 304 151	Gear 1st sp. 44 T.	x1	I&III		■

Special for DAF

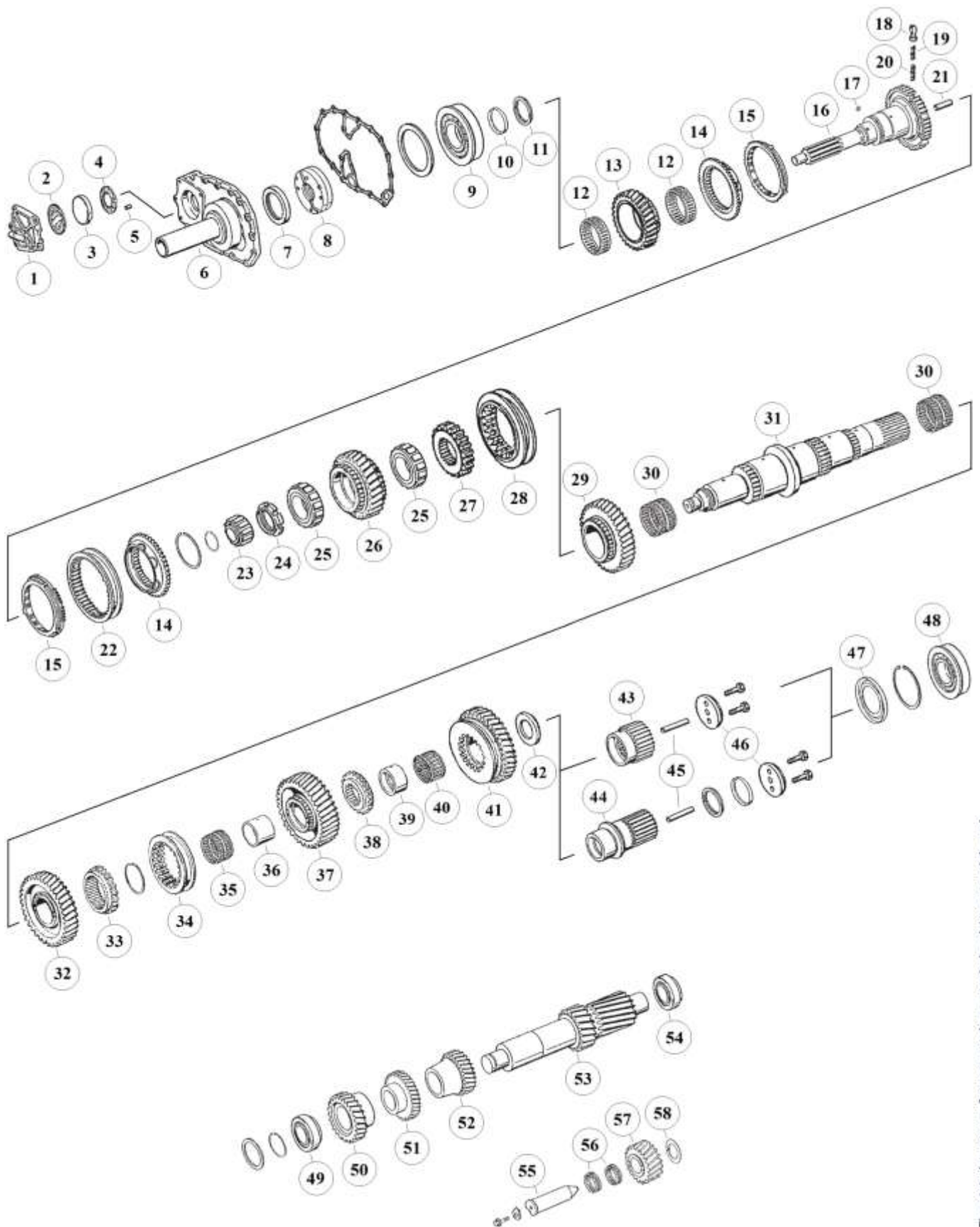
The stated names, reference numbers, symbols, pictures, models and descriptions of truck manufacturers serve only for comparison purposes. It is by no means allowed to use as some original reference towards vehicle owners.

NOTES:

(d)	Together with 0730 061 816 Washer (Fig.10)	(e)	Together with 0730 062 579 Washer (Fig.10)
-----	--	-----	--

# HIGH END GEARS

## Parts for gearbox: 16K160



The stated names, reference numbers, symbols, pictures, models and descriptions of truck manufacturers serve only for comparison purposes. It is by no means allowed to use as some original reference towards vehicle owners.

RATIOS:

16K160 (1297)	I: 11,46 - 0,85	II: 13,68 - 1,00	III: 14,29 - 0,82
---------------	-----------------	------------------	-------------------

Fig.	MAET-No.	DAF-No.	ZF-No.	DESCRIPTION	Q-Ty.	Ratio	Note	16K160 (1297)
37	00.116.034		1297 304 150	Gear 1st sp. 47 T.	x1	II		<input type="checkbox"/>
38	00.191.038	689293	1297 304 154	Follower	x1			<input type="checkbox"/>
39	00.191.185	691391	1297 304 034	Bushing	x1	I&II		<input type="checkbox"/>
40		691353	0735 320 486	Needle Cage D.78x86x44	x1			<input type="checkbox"/>
41	00.191.035	67083	1297 304 149	Reverse Gear 39 T.	x1	I&III		<input type="checkbox"/>
41	00.191.135	689294	1297 304 148	Reverse Gear 38 T.	x1	II		<input type="checkbox"/>
42			1297 304 177	Washer	x1	I&II		<input type="checkbox"/>
43	00.116.044	66377	1297 304 187	Sun Gear 27 T.	x1	I&II		<input type="checkbox"/>
44		67569	1297 304 265	Sun Gear 24 T.	x1	III		<input type="checkbox"/>
45		692222	0730 061 842	Oil Tube	x1			<input type="checkbox"/>
46	00.159.012	609466	1272 304 021	Thrust Washer	x1			<input type="checkbox"/>
47		692066	1295 304 129	Oil Collector	x1	I&II		<input type="checkbox"/>
47		691381	1297 301 004	Oil Collector	x1	III		<input type="checkbox"/>
48		69105	0750 118 153	Bearing D.60x130x31	x1	I&II		<input type="checkbox"/>
48		67052	0750 118 137	Bearing D.80x140x26	x1	III		<input type="checkbox"/>
49		692181	0750 117 010	Bearing D.50,80x100x35	x1			<input type="checkbox"/>
50	00.116.036	67079	1297 303 074	Constant Gear 31 T.	x1	I		<input type="checkbox"/>
50	00.116.035	66361	1297 303 066	Constant Gear 34 T.	x1	II		<input type="checkbox"/>
50	00.191.017	1327922	1297 303 098	Constant Gear 32 T.	x1	III		<input type="checkbox"/>
51	00.116.021	67080	1297 303 072	Gear 4th sp. 34 T.	x1	I		<input type="checkbox"/>
51	00.116.020	66362	1297 303 065	Gear 4th sp. 31 T.	x1	II		<input type="checkbox"/>
51			1297 303 114	Gear 4th sp. 39 T.	x1	III		<input type="checkbox"/>
52	00.110.216	1360741	1297 303 081	Gear 3rd sp. 28 T.	x1	I&III		<input type="checkbox"/>
52	00.116.016		1297 303 077	Gear 3rd sp. 25 T.	x1	II		<input type="checkbox"/>
53	00.116.226	67554	1297 303 048	Counter Shaft 19-23 T.	x1	I&III		<input type="checkbox"/>
53	00.116.026		1297 303 047	Counter Shaft 17-20 T.	x1	II		<input type="checkbox"/>
54		692180	0750 117 008	Bearing D.50x110x42	x1			<input type="checkbox"/>
55	00.151.092	692068	1295 305 056	Reverse Idler Pin	x1			<input type="checkbox"/>
56		584385	0750 115 011	Needle Cage D.45x53x21	x2			<input type="checkbox"/>
57	00.191.036	691719	1295 305 051	Reverse Idler Gear 21 T.	x1	I&III		<input type="checkbox"/>
57	00.113.029	689290	1295 305 052	Reverse Idler Gear 24 T.	x1	II		<input type="checkbox"/>
58	00.168.038	584383	0730 150 064	Washer	x1			<input type="checkbox"/>

**Special for DAF**

The stated names, reference numbers, symbols, pictures, models and descriptions of truck manufacturers serve only for comparison purposes. It is by no means allowed to use as some original reference towards vehicle owners.

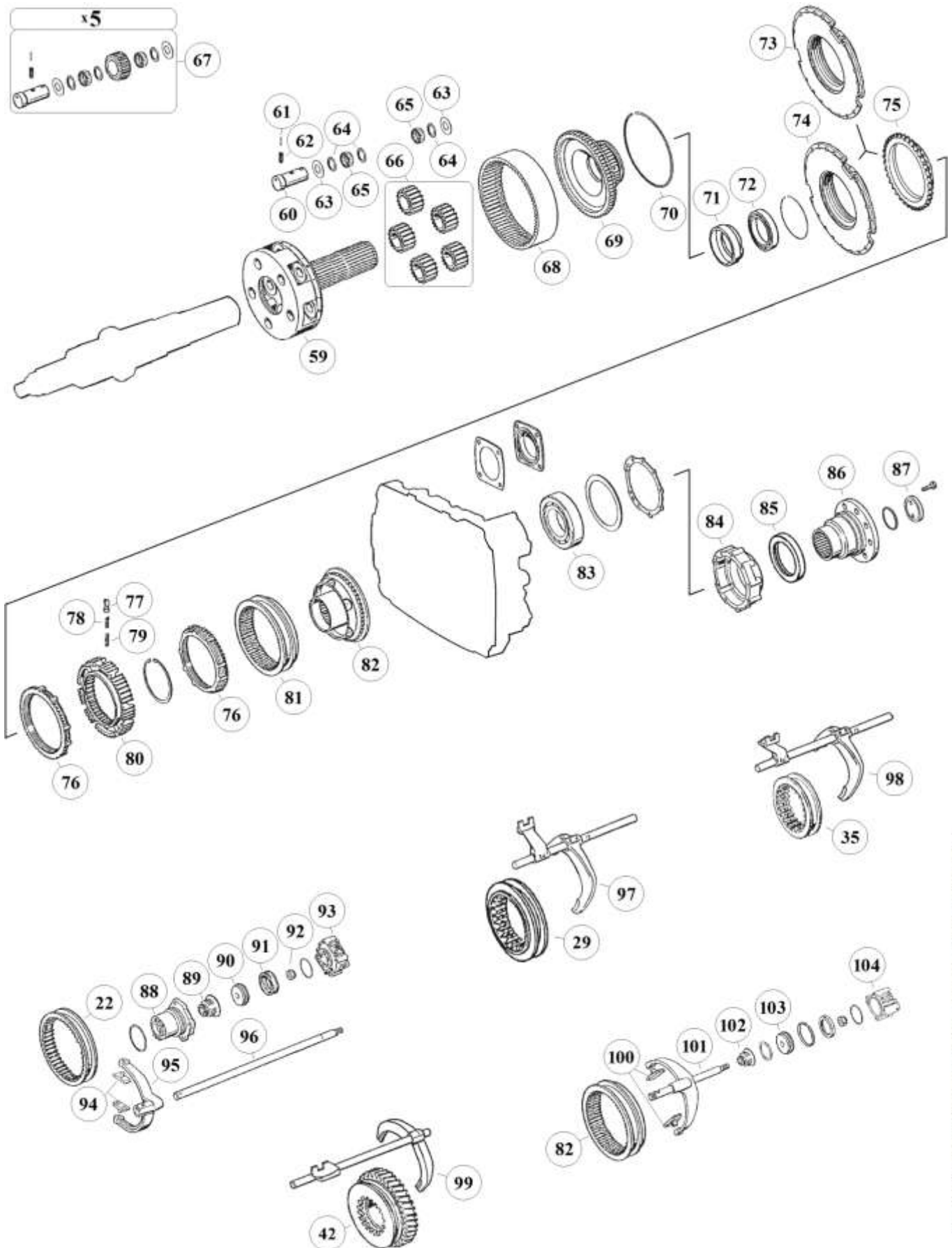
NOTES:

(d)	Together with 0730 061 816 Washer (Fig.10)	(e)	Together with 0730 062 579 Washer (Fig.10)
-----	--	-----	--



# HIGH END GEARS

## Parts for gearbox: 16K160



The stated names, reference numbers, symbols, pictures, models and descriptions of truck manufacturers serve only for comparison purposes. It is by no means allowed to use as some original reference towards vehicle owners.

RATIOS:

16K160 (1297)	I: 11,46 - 0,85	II: 13,68 - 1,00	III: 14,29 - 0,82
---------------	-----------------	------------------	-------------------

Fig.	MAET-No.	DAF-No.	ZF-No.	DESCRIPTION	Q-Ty.	Ratio	Note	16K160 (1297)
59	00.116.501	66391	1297 232 039	Planet Carrier	x1	I&II		■
59		67062	1297 232 045	Planet Carrier	x1	III		■
60	00.116.202	691407	1297 332 109	Planet Pin	x5			■
61	00.116.220		0631 329 017	Lock Pin D.3x24	x5			■
62	00.116.221		0631 329 050	Lock Pin D.5x24	x5			■
63	00.116.223	691327	0501 306 212	Washer D.29x64x1,5	x10			■
64	00.111.201	692246	0730 103 846	Washer D.29x39x1,00	x15			■
65	00.116.205	691356	0750 119 109	Needle D.10x16,80	x120			■
66	00.116.206	66390	1297 232 023	Planet Gear	x5	I&II		■
66	00.191.206	691380	1297 232 024	Planet Gear	x5	III		■
67	00.116.219		1297 298 912	Repair Kit	x1	I&II		■
67			1297 298 919	Repair Kit	x1	III		■
68	00.151.207	69091	1295 332 086	Carrier Crown 86 T.	x1	III		■
68	00.151.307	66393	1297 332 080	Carrier Crown 83 T.	x1	I&II		■
69	00.191.204	66392	1297 332 017	Intermediate Carrier 83 T.	x1	I&II		■
69	00.191.304	691409	1297 332 035	Intermediate Carrier 86 T.	x1	III		■
70	00.151.290	692259	0730 505 055	Lock Ring	x1	I&II		■
70	00.151.190	691340	0730 505 056	Lock Ring	x1	III		■
71	00.113.204	1300625	1297 332 002	Ring	x1			■
72		69395	0750 116 165	Bearing D.80x110x16	x1			■
73	00.116.008	689812	1296 233 006	Coupling Flange (assembly)	x1		opt. w. Fig.74+75	■
74	00.151.308		1296 333 046	Coupling Flange (disassembled)	x1		only w. Fig.75	■
75	00.151.213	1377131	1296 333 050	Coupling Body (disassembled)	x1		only w. Fig.74	■
76	00.112.210	1303708	1296 333 022	Synchronizer Ring	x2		old	■
76	00.151.210	1354113	1296 333 045	Synchronizer Ring	x2		new	■
77	00.168.075	326962	1240 304 278	Pressure Block	x9			■
78	00.168.074	326964	0732 040 386	Pressure Spring De.3x34	x9			■
79	00.168.076	326963	0732 040 385	Pressure Spring D.6x34	x9			■
80	00.116.004	692167	1296 333 002	Synchronizer Hub	x1			■
81	00.116.003	689814	1296 333 023	Sliding Sleeve	x1			■
82	00.116.213	691378	1313 233 001	Coupling Body (38 Spl.)	x1			■
83		692184	0750 116 002	Bearing D.90x160x30	x1			■
84		513935	1296 301 067	Cover	x1			■
85		1304242	0750 111 341	Oil Seal 105x130x12	x1			■
86	00.151.065	689335	1297 338 041	Output Flange D.180-4 H.	x1			■
86	00.151.165	691412	1297 338 010	Output Flange D.180-10 H.	x1			■
87		696097	1295 332 051	Thrust Washer	x1			■
88	00.151.093	692130	1296 312 042	Cylinder	x1			■
89		692237	0750 112 034	Cap Collar D.25x38x14,2	x1			■
90		69363	1296 312 053	Piston	x1			■
91		66388	0750 112 089	Ring 53x63x16,2	x1			■
92		1291087	0737 006 095	Nut	x1			■
93		67061	0750 132 032	Cylinder	x1			■
93			1295 212 008	Cylinder	x1			■
93		692239	0750 132 033	Cylinder	x1			■
94	00.110.035	696445	1295 306 132	Sliding Pads	x2		(Bronze)	■
95		689936	1313 312 002	Fork	x1			■
96			1297 312 007	Shifting Rod	x1			■
97			1297 206 077	Fork	x1			■

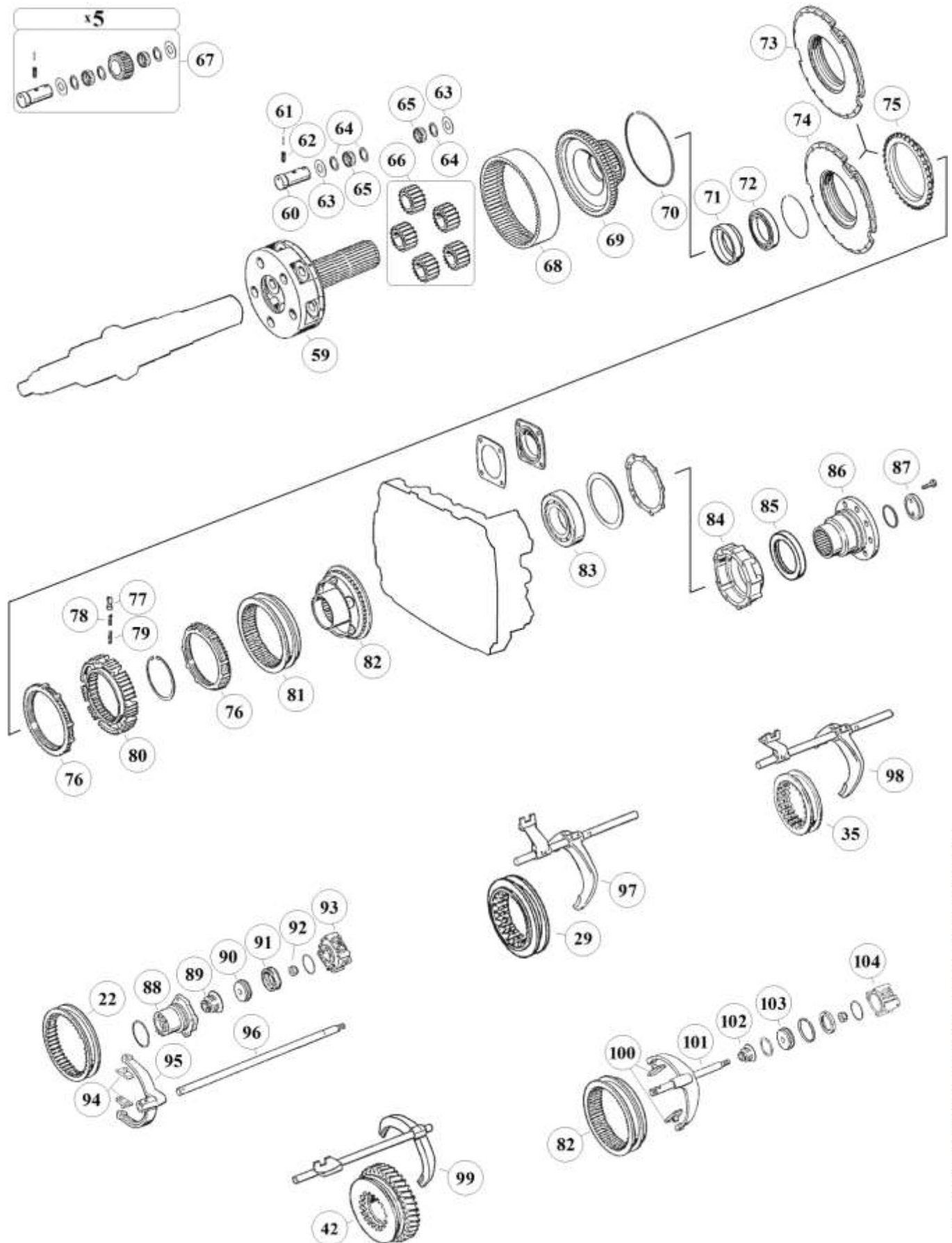
Special for DAF

The stated names, reference numbers, symbols, pictures, models and descriptions of truck manufacturers serve only for comparison purposes. It is by no means allowed to use as some original reference towards vehicle owners.

NOTES:

# HIGH END GEARS

## Parts for gearbox: 16K160



The stated names, reference numbers, symbols, pictures, models and descriptions of truck manufacturers serve only for comparison purposes. It is by no means allowed to use as some original reference towards vehicle owners.

### RATIOS:

16K160 (1297)	I: 11,46 - 0,85	II: 13,68 - 1,00	III: 14,29 - 0,82
---------------	-----------------	------------------	-------------------



# HIGH END GEARS

## Parts for gearbox: 16K160

Fig.	MAET-No.	DAF-No.	ZF-No.	DESCRIPTION	Q-Ty.	Ratio	Note	16K160 (1297)
97			1297 206 083	Fork	x1			■
98			1297 206 076	Fork	x1			■
98			1297 206 082	Fork	x1			■
99			1297 206 172	Fork	x1			■
99		67572	1297 206 173	Fork	x1			■
99			1297 206 184	Fork	x1			■
100		692175	1296 334 004	Sliding Pads	x2		(Bronze)	■
101		1246847	1312 234 002	Shifting Rod (assembly)	x1			■
102		692237	0750 112 034	Cap Collar D.25x38x14,2	x1			■
103		699798	1296 334 039	Piston	x1			■
104		68348	1295 334 075	Cylinder	x1			■

**Special for DAF**

The stated names, reference numbers, symbols, pictures, models and descriptions of truck manufacturers serve only for comparison purposes. It is by no means allowed to use as some original reference towards vehicle owners.



NOTES:

# HIGH END GEARS