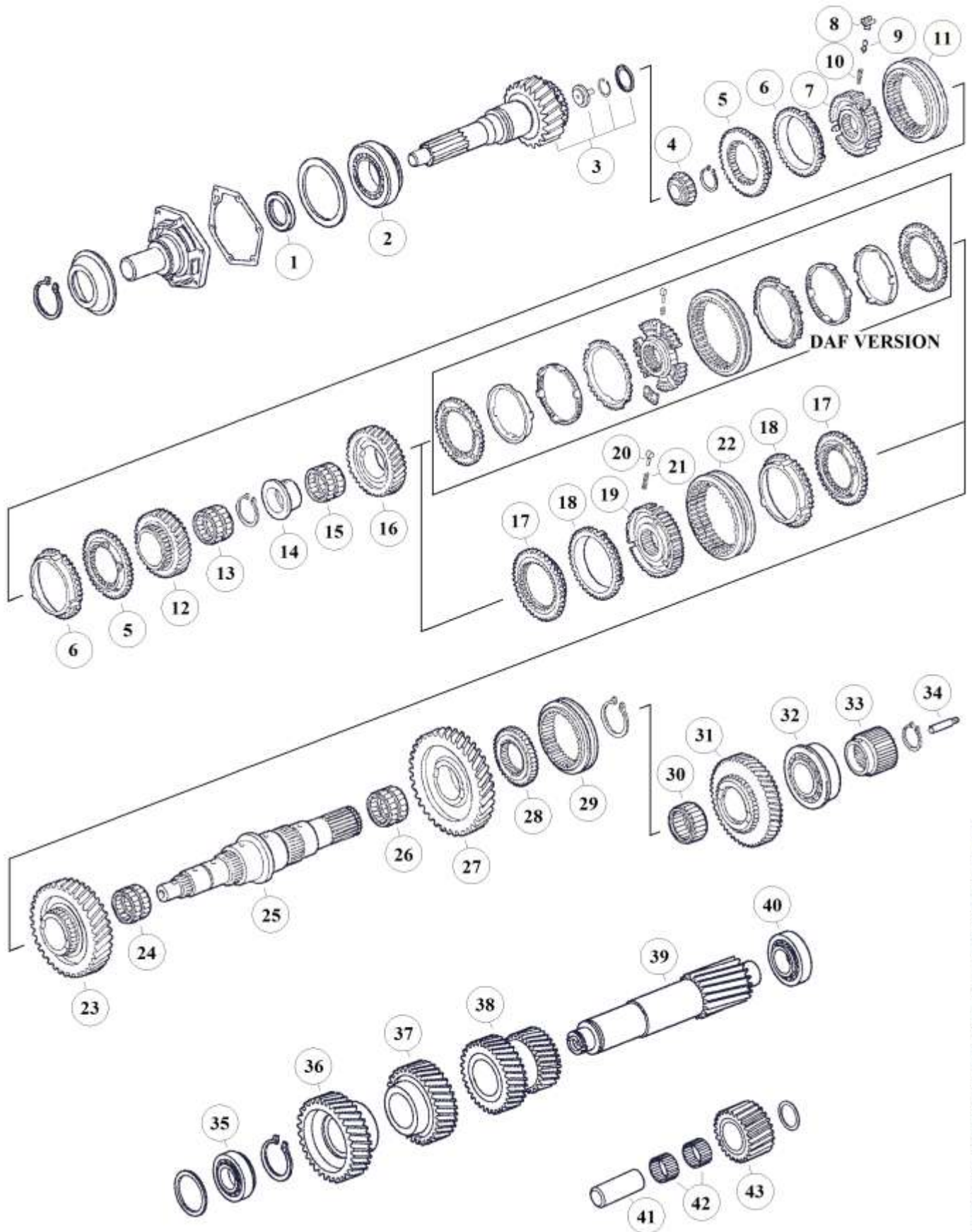


**Suitable to:
ZF 9S109 EcoMid**

IVECO

HIGH END GEARS

Parts for gearbox: 9S109



The stated names, reference numbers, symbols, pictures, models and descriptions of truck manufacturers serve only for comparison purposes. It is by no means allowed to use as some original reference towards vehicle owners.

RATIOS:

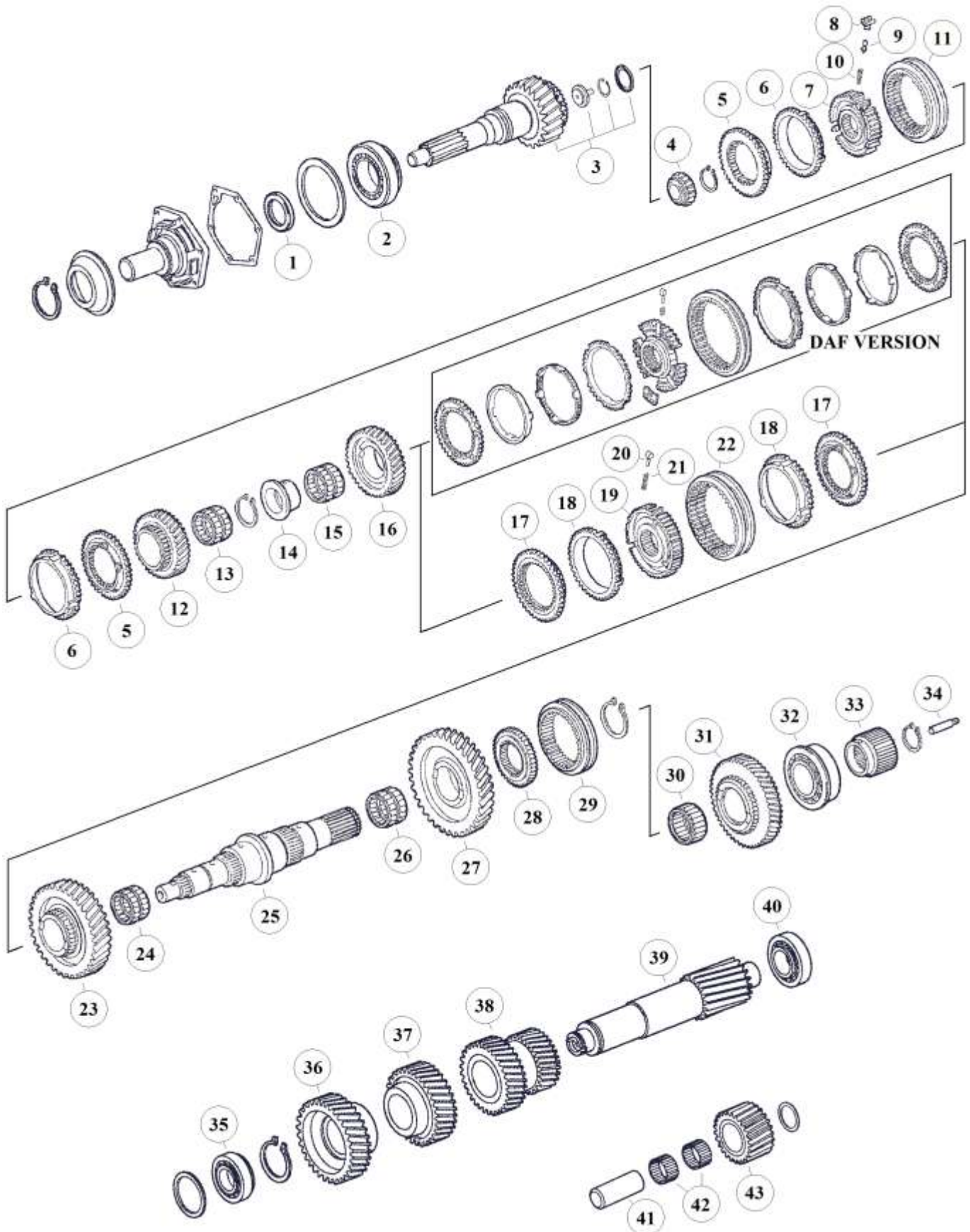
I	10,24 - 0,74	III	12,91 - 1,00
II	10,25 - 0,79	IV	12,92 - 1,00

Fig.	MAET-No.	IVECO-No.	ZF-No.	DESCRIPTION	Q-Ty.	Ratio	Note	9S109 (1304)
1		8193659	0750 111 149	Oil Seal D.48x65x10	x1			■
2		8190987	0750 117 079	Bearing D.66,6x117,4x30,1	x1			■
3			1304 202 170	Input Shaft 27 T.	x1	I&II		■
3	00.109.001	500001707	1304 202 171	Input Shaft 27 T.	x1	I&II		■
3			1304 202 172	Input Shaft 27 T.	x1	I&II		■
3			1304 202 173	Input Shaft 27 T.	x1	I&II		■
3			1304 202 180	Input Shaft 27 T.	x1	I&II		■
3			1304 202 245	Input Shaft 27 T.	x1	I&II		■
3		42530600	1304 202 168	Input Shaft 26 T.	x1	III&IV		■
3			1304 202 175	Input Shaft 26 T.	x1	III&IV		■
3	00.109.101		1304 202 177	Input Shaft 26 T.	x1	III&IV		■
3		42532859	1304 202 178	Input Shaft 26 T.	x1	III&IV		■
4		500002656	0735 371 748	Needle Cage D.32x29,5	x1			■
5	00.109.008	93193716	1304 304 660	Coupling Body	x2			■
6	00.109.054	8193098	1304 304 014	Synchronizer Ring	x2		old	■
6	00.109.254	42532850	1304 304 683	Synchronizer Ring	x2		new	■
7	00.109.032	8193758	1304 304 051	Synchronizer Hub	x1			■
8	00.109.080	2965054	1238 304 394	Pressure Block	x3			■
9	00.109.075	2965053	1249 304 222	Pressure Pin	x3			■
10	00.175.205	2967403	0732 040 409	Pressure Spring D.6,5x23,5	x3			■
11	00.109.028	93156815	6002 305 515	Sliding Sleeve	x1			■
12		220998	1304 304 472	Gear 3rd sp. 23 T.	x1	I		■
12		172279	1304 304 365	Gear 3rd sp. 24 T.	x1	II		■
12		93191953	1304 304 571	Gear 3rd sp. 27 T.	x1	III		■
12	00.109.031	8199058	1304 304 500	Gear 3rd sp. 25 T.	x1	IV		■
13		176581	0735 321 011	Needle Cage 60x68x23	x1			■
14	00.109.029	8193746	1304 304 050	Bushing	x1			■
15		8193753	0750 115 227	Needle Cage D.75x83x40	x1			■
16			1304 304 367	Gear 2nd sp. 31 T.	x1	I&II		■
16		93191952	1304 304 570	Gear 2nd sp. 30 T.	x1	III		■
16	00.109.022	93155554	1304 304 499	Gear 2nd sp. 29 T.	x1	IV		■
17	00.109.108	8193069	1304 304 408	Coupling Body	x2			■
18	00.109.154	93156812	1304 304 542	Synchronizer Ring	x2		old	■
18	00.109.354	42532851	1304 304 681	Synchronizer Ring	x2		new	■
19	00.109.132	42532852	1304 304 591	Synchronizer Hub	x1			■
20	00.151.080	93156036	1297 304 436	Pressure Block	x3			■
21	00.175.205	2967403	0732 040 409	Pressure Spring D.6,5x23,5	x3			■
22	00.109.128	93156811	1304 304 597	Sliding Sleeve	x1			■
23		93158474	1304 304 471	Gear 1st Speed	x1	I		■
23			1304 304 369	Gear 1st sp. 33 T	x1	II		■
23		93191951	1304 304 569	Gear 1st sp. 33 T	x1	III		■
23	00.109.034	8194253	1304 304 498	Gear 1st sp. 33 T.	x1	IV		■
24		8193024	0735 320 816	Needle Cage D.75x83x23	x1			■
25	00.109.015	8193738	1304 304 449	Main Shaft	x1			■
26		42490368	0735 320 500	Needle Cage D.75x83x35	x1			■
27			1304 304 428	Low Gear sp. 38 T.	x1	I&II		■
27		93191949	1304 304 543	Low Gear sp.	x1	III		■
27		8193739	1304 304 426	Low Gear sp. 37 T.	x1	IV		■
28	00.109.232	8193740	1304 304 443	Synchronizer Hub	x1			■

Special for IVECO

The stated names, reference numbers, symbols, pictures, models and descriptions of truck manufacturers serve only for comparison purposes. It is by no means allowed to use as some original reference towards vehicle owners.

NOTES:



The stated names, reference numbers, symbols, pictures, models and descriptions of truck manufacturers serve only for comparison purposes. It is by no means allowed to use as some original reference towards vehicle owners.

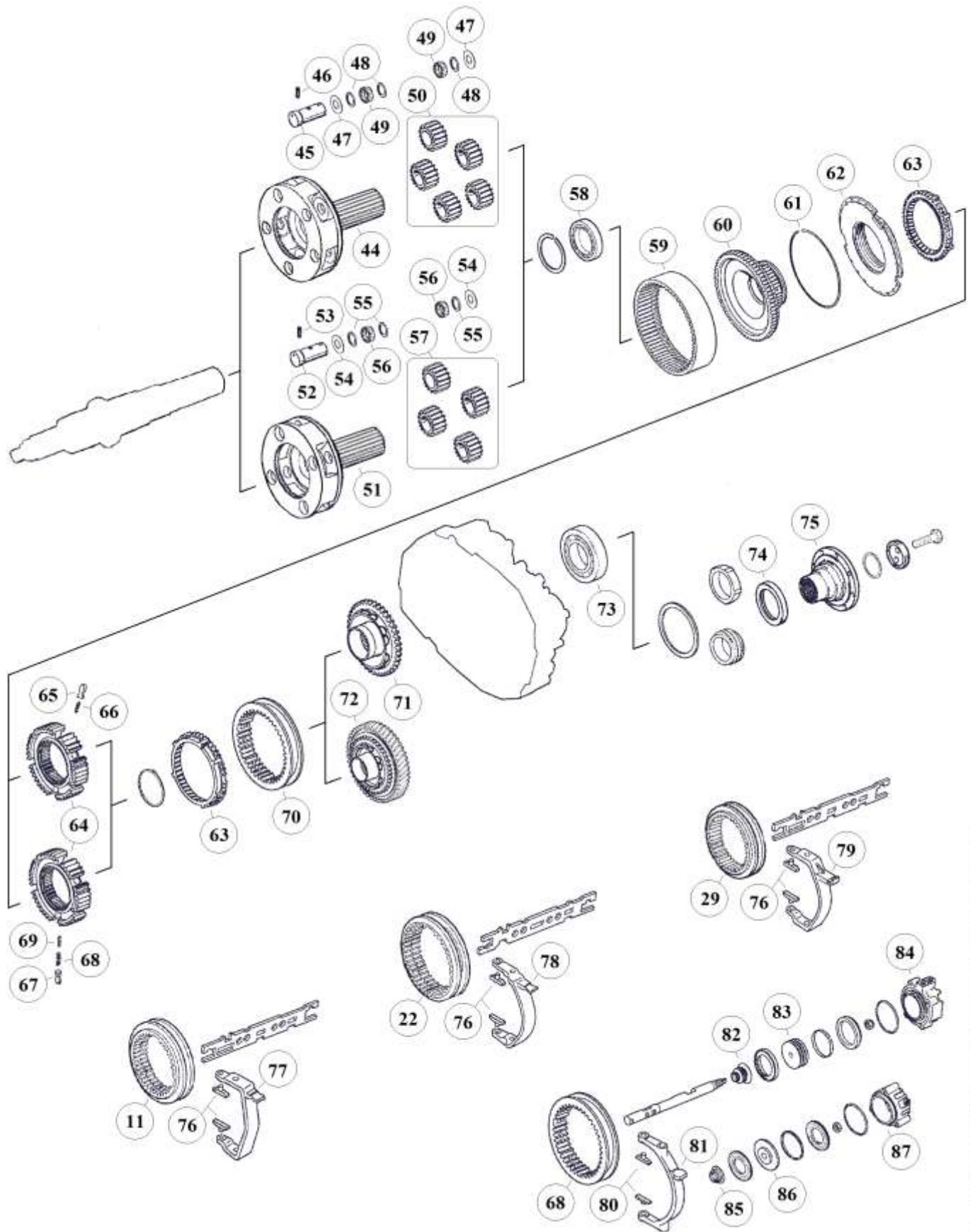
RATIOS:

I	10,24 - 0,74	III	12,91 - 1,00
II	10,25 - 0,79	IV	12,92 - 1,00

Fig.	MAET-No.	IVECO-No.	ZF-No.	DESCRIPTION	Q-Ty.	Ratio	Note	9S109 (1304)
29	00.109.228	8193741	1304 304 444	Sliding Sleeve	x1			■
30		8193080	0750 115 225	Needle Cage D.60x68x39	x1			■
31			1304 304 437	Reverse Gear 35 T.	x1	I&II		■
31		93191950	1304 304 553	Reverse Gear	x1	III		■
31	00.109.035	8193742	1304 304 435	Reverse Gear 32 T.	x1	IV		■
32		1905484	0735 371 605	Bearing D.50,8x104,7x30,1	x1			■
33	00.109.044	8193743	1304 304 448	Sun Gear 34 T.	x1			■
34	00.119.243	93193506	1312 304 150	Oil Tube	x1			■
35		1903646	0735 371 749	Bearing D.40x80x32	x1			■
36	00.109.012	176567	1304 303 285	Constant Gear 33 T.	x1	I&II		■
36	00.109.112	93156805	1304 303 272	Constant Gear 36 T.	x1	III&IV		■
37		220997	1304 303 210	Gear 3rd sp. 38 T.	x1	I		■
37			1304 303 171	Gear 3rd sp. 37 T.	x1	II		■
37		93191948	1304 303 287	Gear 3rd sp. 28 T.	x1	III		■
37	00.109.025	93155086	1304 303 244	Gear 3rd sp. 27 T.	x1	IV		■
38	00.109.020		1304 303 209	Twin Gear 1st-2nd 28-21 T.	x1	I		■
38			1304 303 172	Twin Gear 1st-2nd	x1	II		■
38		93191947	1304 303 286	Twin Gear 1sp-2nd	x1	III		■
38	00.109.120	93156804	1304 303 243	Twin Gear 1st-2nd 19-23 T.	x1	IV		■
39	00.109.227	176566	1304 303 269	Counter Shaft 16 T.	x1	I&II		■
39	00.109.127	93191946	1304 303 268	Counter Shaft 14 T.	x1	III		■
39	00.109.027	93156803	1304 303 267	Counter Shaft 14 T.	x1	IV		■
40		1905016	0750 117 083	Bearing D.50,8x95,2x27,7	x1			■
41	00.175.039	8190979	1304 305 030	Reverse Idler Pin	x1			■
42		8193725	0735 358 192	Needle Cage D.40x60x26	x2			■
43	00.119.029	93191231	1304 305 043	Reverse Idler Gear 22 T.	x1	I&II		■
43		42532875	1304 305 045	Reverse Idler Gear	x1	III		■
43			1304 305 044	Reverse Idler Gear	x1	IV		■

Special for IVECO

The stated names, reference numbers, symbols, pictures, models and descriptions of truck manufacturers serve only for comparison purposes. It is by no means allowed to use as some original reference towards vehicle owners.



The stated names, reference numbers, symbols, pictures, models and descriptions of truck manufacturers serve only for comparison purposes. It is by no means allowed to use as some original reference towards vehicle owners.

RATIOS:

I	10,24 - 0,74	III	12,91 - 1,00
II	10,25 - 0,79	IV	12,92 - 1,00

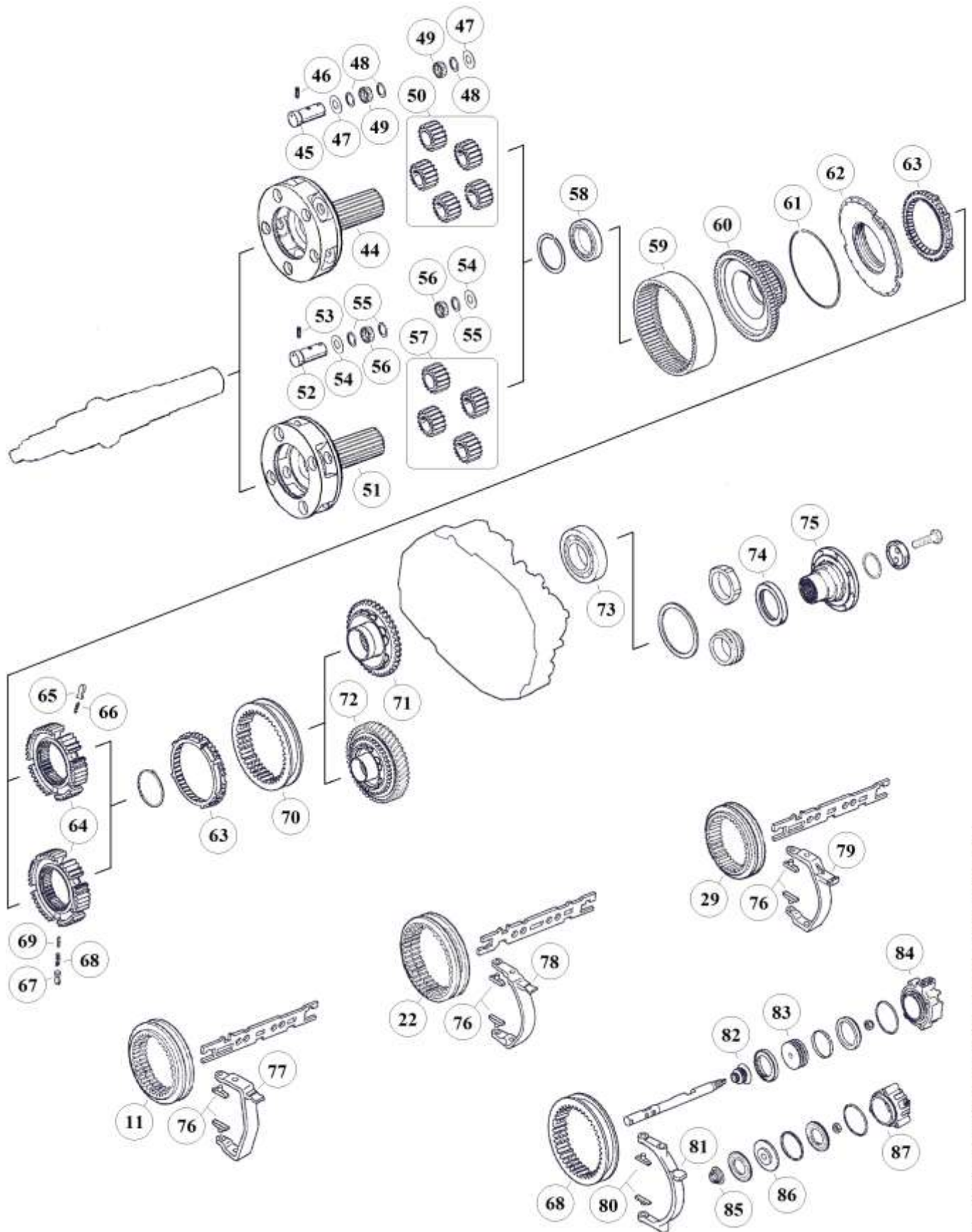
Fig.	MAET-No.	IVECO-No.	ZF-No.	DESCRIPTION	Q-Ty.	Ratio	Note	9S109 (1304)
44		42532844	1304 232 091	Planet Carrier	x1	(a)		■
45	00.109.202	93156862	1304 332 111	Planet Pin HO	x5	(a)		■
46	00.119.220	93156863	0631 329 037	Lock Pin 4x26	x5	(a)		■
47	00.159.203	42480885	0501 304 692	Thrust Washer 1,50	x10	(a)		■
48	00.159.204	42480886	0730 103 102	Washer 1,50	x15	(a)		■
49	00-119.205	8193195	0735 470 115	Needle D.5x15,30	x200	(a)		■
50	00.109.206	8193780	1304 232 025	Planet Gear Set	x1	(a)		■
51	00.109.201	222576	1304 232 095	Planet Carrier	x1	(b)		■
52	00.109.202	93156862	1304 332 111	Planet Pin	x4	(b)		■
53	00.119.220	93156863	0631 329 037	Lock Pin 4x26	x4	(b)		■
54	00.159.203	42480885	0501 304 692	Thrust Washer 1,50	x8	(b)		■
55	00.159.204	42480886	0730 103 102	Washer 1,50	x12	(b)		■
56	00.119.205	8193195	0735 470 115	Needle D.5x15,30	x160	(b)		■
57		176626	1304 232 037	Planet Gear Set	x1	(b)		■
58		42491977	0735 340 080	Bearing D.70x90x10	x1		(Q)	■
58		623949	0750 116 165	Bearing D.80x110x16	x1		(R)	■
59	00.109.207	93191520	1304 332 178	Carrier Crown 86 T.	x1			■
60	00.109.204	8193198	1304 332 060	Intermediate Carrier 86 T.	x1		(Q)	■
60	00.119.204		1304 332 215	Intermediate Carrier 86 T.	x1		(R)	■
61	00.119.298	93191521	0730 505 140	Lock Ring	x1			■
62	00.109.208	93159678	1304 233 005	Coupling Flange	x1		(Q)	■
62	00.109.308	42533455	1304 233 006	Coupling Flange	x1		(R)	■
63	00.109.210	8193211	1304 333 005	Coupling Body	x2		(Q) old	■
63	00.109.310		1304 333 021	Coupling Body	x2		(Q) new	■
63	00.112.210	7982226	1296 333 022	Coupling Body	x2		(R) old	■
63		42532826	1296 333 045	Coupling Body	x2		(R) new	■
64	00.109.211	8193207	1304 332 066	Synchronizer Hub	x1		(Q)	■
64	00.151.211	93163920	1313 333 001	Synchronizer Hub	x1		(R)	■
65	00.168.075	2960200	1240 304 278	Pressure Block	x6		(R)	■
66	00.168.076	8832940	0732 040 385	Pressure Spring De.6x34	x6		(R)	■
67	00.168.075	2960200	1240 304 278	Pressure Block	x9		(Q)	■
68	00.168.076	8832940	0732 040 385	Pressure Spring De.6x34	x9		(Q)	■
69	00.168.074	9931785	0732 040 386	Pressure Spring De.3x34	x9		(Q)	■
70	00.109.212	8193212	1304 332 089	Sliding Sleeve	x1		(Q)	■
70	00.119.328	42533456	1304 333 011	Sliding Sleeve	x1		(R)	■
71	00.109.213	8193213	1304 332 075	Coupling Body	x1		(Q)	■
71	00.119.213	42533457	1304 233 013	Coupling Body	x1		(R)	■
72	00.109.313		1304 232 085	Retarder Gear	x1		(R) w. Ret.	■
73		8193180	0750 116 048	Bearing D.78x130x25	x1		(Q)	■
73			0750 116 197	Bearing D.80x140x26	x1		(R)	■
74		93191591	0734 319 439	Oil Seal D.95x115x10	x1			■
75	00.119.065		1304 338 059	Output Flange D.150-4 H.	x1		(Q)	■
75			1304 338 060	Output Flange D.180-4 H.	x1		(Q)	■
75	00.119.265	93191954	1304 338 050	Output Flange D.180-4 H.	x1		(Q)	■
75			1304 338 053	Output Flange D.180-8 H.	x1		(Q)	■
75	00.119.465	93156865	1304 338 052	Output Flange D.180-10 H.	x1		(Q)	■
75			1304 338 067	Output Flange D.204-4 H.	x1		(Q)	■
75	00.119.565		1304 338 056	Output Flange D.204-4 H.	x1		(Q)	■
75			1304 338 109	Output Flange D.180-4 H.	x1		(R)	■

Special for IVECO

The stated names, reference numbers, symbols, pictures, models and descriptions of truck manufacturers serve only for comparison purposes. It is by no means allowed to use as some original reference towards vehicle owners.

NOTES:

(a)	5 Planet Version	(Q)	Use only with (Q)-Parts. DO NOT MIX
(b)	4 Planet Version	(R)	Use only with (R)-Parts. DO NOT MIX



The stated names, reference numbers, symbols, pictures, models and descriptions of truck manufacturers serve only for comparison purposes. It is by no means allowed to use as some original reference towards vehicle owners.

RATIOS:

I	10,24 - 0,74	III	12,91 - 1,00
II	10,25 - 0,79	IV	12,92 - 1,00

Fig.	MAET-No.	IVECO-No.	ZF-No.	DESCRIPTION	Q-Ty.	Ratio	Note	9S109 (1304)
75	00.119.765	42533448	1304 338 097	Output Flange D.180-4 H.	x1		(R)	■
76	00.109.180	42490421	1290 306 066	Sliding Pads	x6		(Bronze)	■
77	00.119.188	93156818	1304 306 010	Fork	x1			■
77	00.119.288	8193121	1304 306 044	Fork	x1			■
77			1304 306 096	Fork	x1			■
78	00.119.488	8193123	1304 306 043	Fork	x1			■
78	00.119.388	93156821	1304 306 009	Fork	x1			■
79		8193762	1304 306 077	Fork	x1			■
80	00.168.059	2984439	1272 334 003	Sliding Pads	x2		(Bronze)	■
81	00.119.688	8193220	1304 334 039	Fork	x1		(Q)	■
81	00.119.788	42533429	1304 334 063	Fork	x1		(R)	■
82		8193161	0750 112 047	Oil Seal	x1		(Q)	■
83		93194812	1304 334 072	Piston	x1		(Q)	■
84		93190978	1304 334 061	Cylinder	x1		(Q)	■
85		8193161	0750 112 047	Oil Seal	x1		(R)	■
86		42533425	1315 334 041	Piston	x1		(R)	■
87		42533427	1304 334 079	Cylinder	x1		(R)	■

Special for IVECO

The stated names, reference numbers, symbols, pictures, models and descriptions of truck manufacturers serve only for comparison purposes. It is by no means allowed to use as some original reference towards vehicle owners.



NOTES:

(a)	5 Planet Version	(Q)	Use only with (Q)-Parts. DO NOT MIX
(b)	4 Planet Version	(R)	Use only with (R)-Parts. DO NOT MIX

HIGH END GEARS