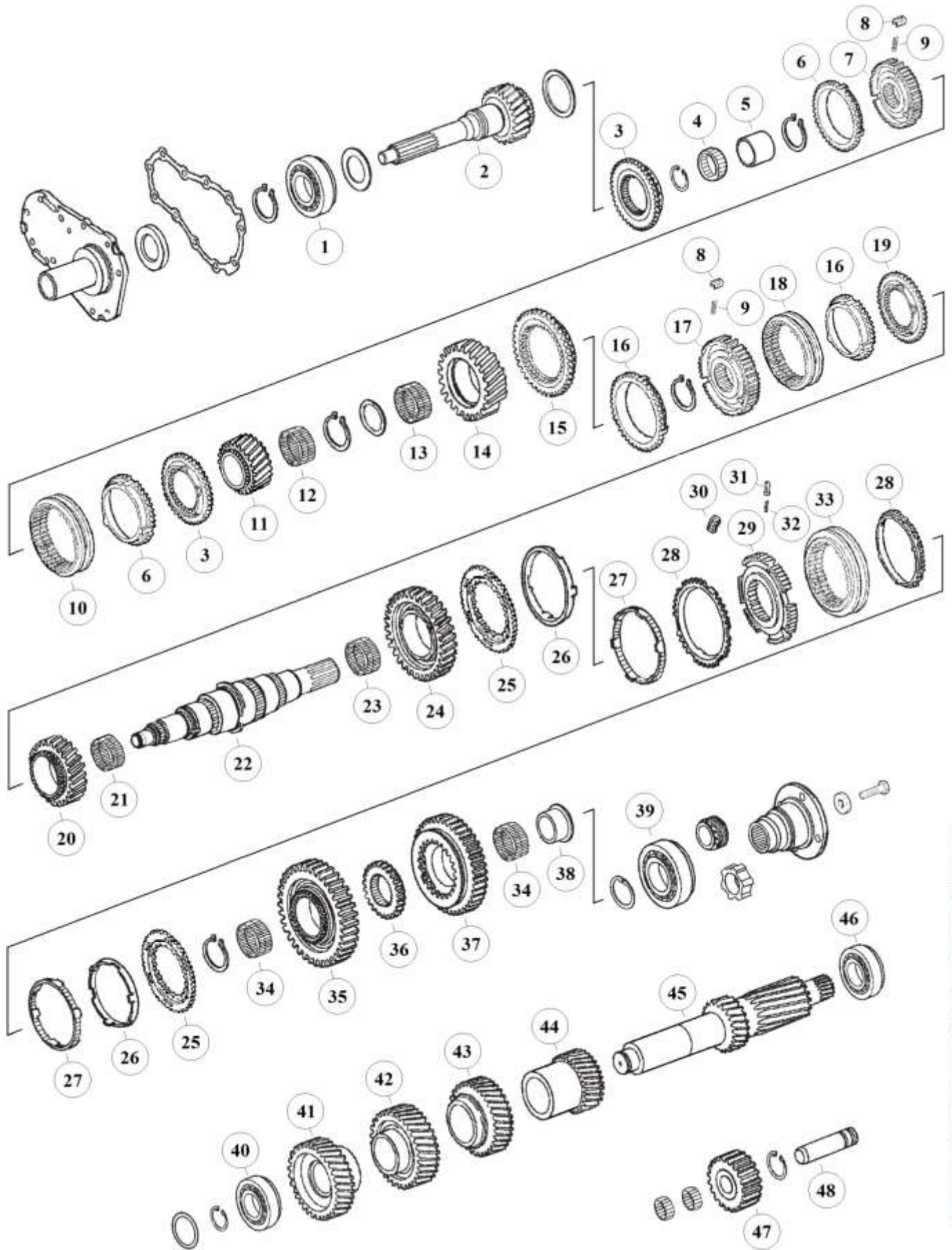


**Suitable to:
ZF 6S-850 EcoLite**

MAN

HIGH END GEARS

Parts for gearbox: 6S-850



The stated names, reference numbers, symbols, pictures, models and descriptions of truck manufacturers serve only for comparison purposes. It is by no means allowed to use as some original reference towards vehicle owners.

RATIOS:

6S-850 (1290)	6,72 - 0,79
---------------	-------------

Fig.	MAET-No.	MAN-No.	ZF-No.	DESCRIPTION	Q-Ty.	Note	6S-850 (1290)
1			0735 330 685	Bearing	x1		■
2			1290 302 474	Input Shaft	x1	(a)	■
2			1290 302 472	Input Shaft	x1	(a)	■
2			1290 302 486	Input Shaft	x1	(b)	■
2			1290 302 478	Input Shaft	x1	(b)	■
2	00.129.001		1290 302 465	Input Shaft	x1	(b)	■
2			1290 302 490	Input Shaft	x1	(b)	■
2			1290 302 482	Input Shaft	x1	(b)	■
2			1290 302 471	Input Shaft	x1	(b)	■
3	00.129.006	81 32425 0156	1290 304 482	Coupling Body	x2		■
4			0735 358 128	Roller Cage	x1		■
5	00.129.007	81 93501 0038	0735 295 119	Bushing	x1		■
6	00.129.054	81 32420 0262	1317 304 150	Synchronizer Ring	x2		■
7	00.129.035	81 32420 0261	1317 304 026	Synchronizer Hub	x1		■
8	00.129.075	81 32510 0067	1317 304 081	Pressure Block	x6		■
9	00.129.074	81 97602 0909	0732 042 510	Pressure Spring	x6		■
10	00.129.010	81 32402 0206	1317 304 126	Sliding Sleeve	x1		■
11			1290 304 548	Gear 6th sp.	x1	(a)	■
11	00.129.003	81 32302 0130	1290 304 547	Gear 6th sp.	x1	(b)	■
12			0735 321 527	Needle Cage	x1		■
13			0735 321 528	Needle Cage	x1		■
14		82 32302 0004	1290 304 574	Gear 4th sp.	x1		■
15	00.129.008	81 32425 0153	1290 304 508	Coupling Body	x1		■
16	00.129.068	81 32420 0260	1317 304 114	Synchronizer Ring	x2		■
17	00.129.067	81 32425 0152	1317 304 031	Synchronizer Hub	x1	old	■
17	00.129.167		1290 304 619	Synchronizer Hub	x1	new	■
18	00.129.028	81 32402 0205	1317 304 125	Sliding Sleeve	x1		■
19	00.129.056	81 32425 0150	1290 304 509	Coupling Body	x1		■
20	00.129.005	81 32302 0151	1290 304 581	Gear 3rd sp.	x1	(a)&(b)	■
21			0735 321 529	Needle Cage	x1		■
22		82 32202 0002	1290 304 571	Main Shaft	x1	old	■
22			1290 304 620	Main Shaft	x1	new	■
23			0735 321 530	Needle Cage	x1		■
24			1290 304 485	Gear 2th sp.	x1	(a)	■
24		81 32302 0127	1290 304 487	Gear 2nd sp.	x1	(b)	■
25	00.119.206	81 32425 0151	1304 304 623	Synchronizer Ring Disk	x2		■
26	00.119.049	81 32420 0256	1290 304 350	Intermediate Cone	x2		■
27	00.119.050	81 32420 0263	1290 304 366	Intermediate Synchronizer Ring	x2		■
28	00.119.254	81 32420 0258	1290 304 438	Synchronizer Ring	x2		■
29	00.119.232	81 32450 0259	1304 304 687	Synchronizer Hub	x1		■
30	00.151.380	81 38108 0005	1312 304 159	Locking Plate	x3		■
31	00.151.080	81 32510 0013	1297 304 436	Pressure Block	x3		■
32	00.175.205	81 97601 0895	0732 040 409	Pressure Spring D.6,5x23,5	x3		■
33	00.119.228	81 32402 0204	6002 305 994	Sliding Sleeve	x1		■
34			0735 321 531	Needle Cage	x2		■
35		82 32302 0002	1290 304 572	Gear 1st sp.	x1		■
36		82 32425 0008	1290 304 573	Follower Ring	x1		■
37		81 32301 0535	1290 304 058	Reverse Gear 35 T.	x1		■
38		81 93001 0277	1290 304 056	Bushing	x1		■

Special for MAN

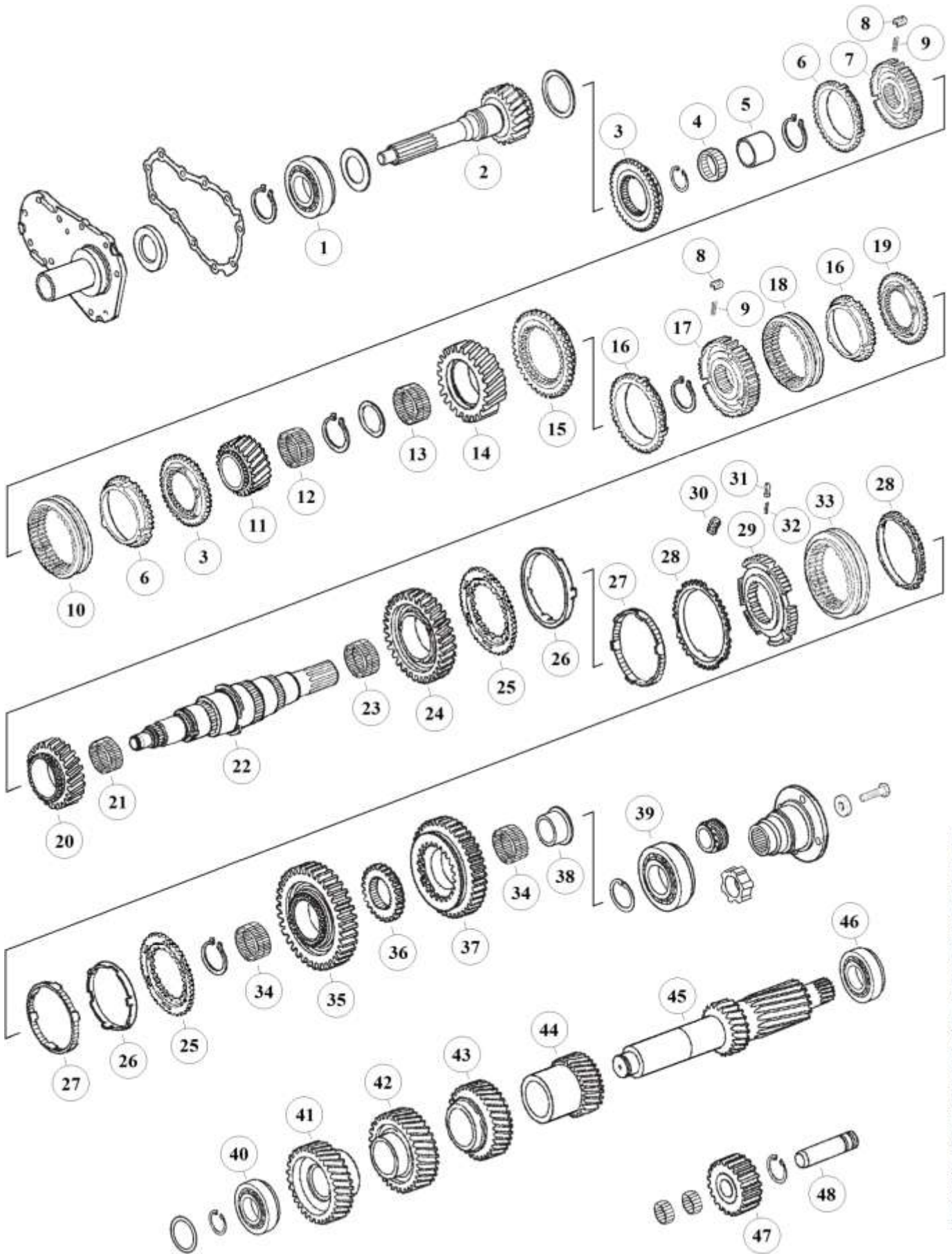
The stated names, reference numbers, symbols, pictures, models and descriptions of truck manufacturers serve only for comparison purposes. It is by no means allowed to use as some original reference towards vehicle owners.

NOTES:

(a)	Use only with (a)-Parts together. DO NOT MIX
(b)	Use only with (b)-Parts together. DO NOT MIX

HIGH END GEARS

Parts for gearbox: 6S-850



RATIOS:

6S-850 (1290)	6,72 - 0,79
---------------	-------------

The stated names, reference numbers, symbols, pictures, models and descriptions of truck manufacturers serve only for comparison purposes. It is by no means allowed to use as some original reference towards vehicle owners.

Fig.	MAET-No.	MAN-No.	ZF-No.	DESCRIPTION	Q-Ty.	Note	S6-850 (1290)
39		06 31461 4900	0750 116 373	Bearing	x1		■
40		81 93420 0156	0735 371 607	Bearing	x1		■
41			1290 303 203	Gear 5th sp.	x1	(a)	■
41		81 32302 0125	1290 303 200	Gear 5th sp. 36 T.	x1	(b)	■
42			1290 303 204	Gear 6th sp.	x1	(a)	■
42		81 32302 0124	1290 303 199	Gear 6th sp. 53 T.	x1	(b)	■
43		81 32302 0123	1290 303 198	Gear 4th sp. 31 T.	x1		■
44			1290 303 202	Gear 3rd sp. 22 T.	x1	(a)	■
44		81 32302 0122	1290 303 197	Gear 3rd sp. 22 T.	x1	(b)	■
45			1290 203 042	Counter Shaft	x1	(a)	■
45		81 32206 0125	1290 203 039	Counter Shaft	x1	(b)	■
46			0735 370 438	Bearing	x1		■
47		81 32315 0061	1290 305 034	Reverse Idler Gear	x1		■
48		81 32523 0126	1290 305 028	Reverse Idler Pin	x1		■

Special for MAN

The stated names, reference numbers, symbols, pictures, models and descriptions of truck manufacturers serve only for comparison purposes. It is by no means allowed to use as some original reference towards vehicle owners.

NOTES:

(a)	Use only with (a)-Parts together. DO NOT MIX
(b)	Use only with (b)-Parts together. DO NOT MIX

HIGH END GEARS