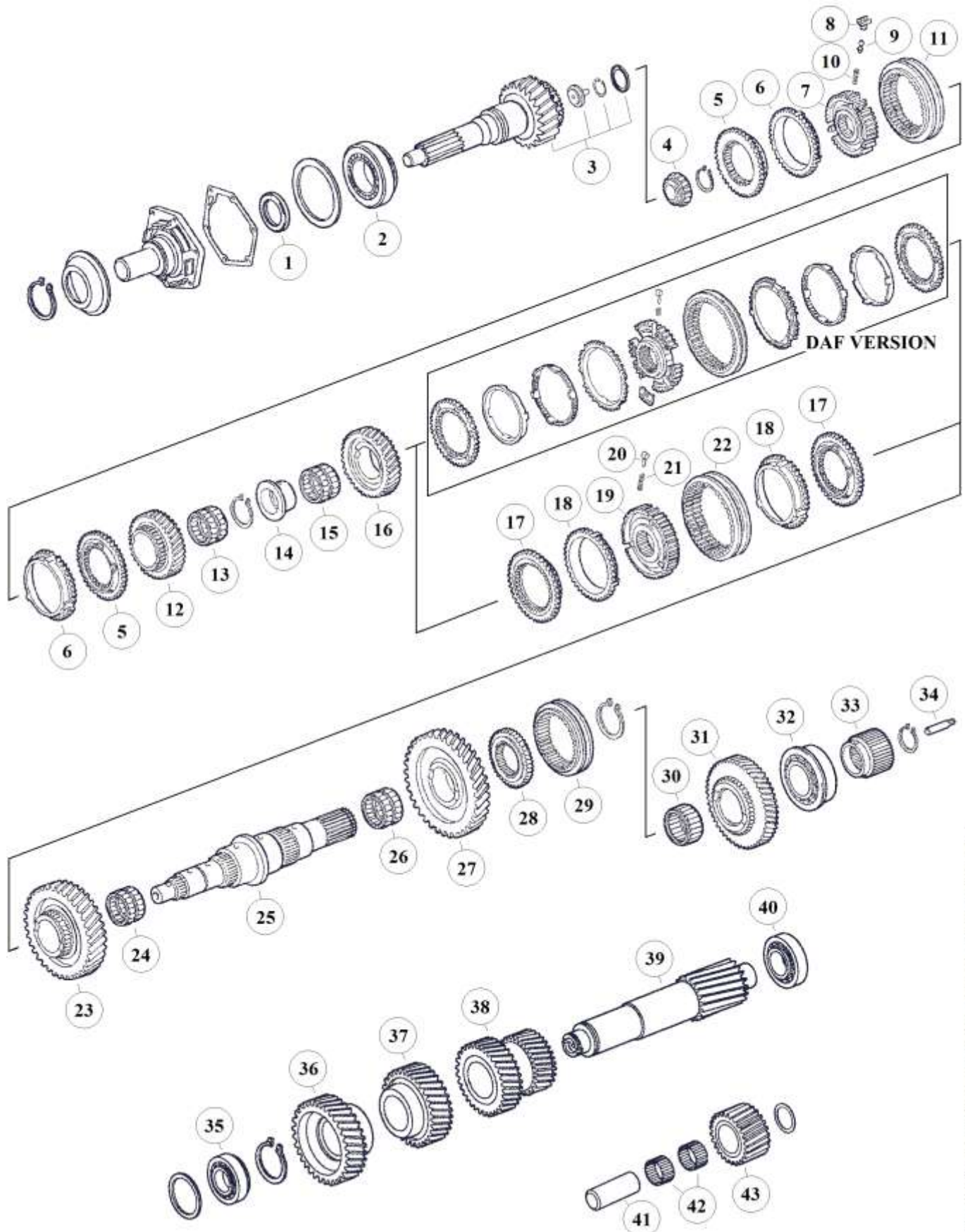


**Suitable to:
ZF 9S109 EcoMid**

MAN

HIGH END GEARS

Parts for gearbox: 9S109



The stated names, reference numbers, symbols, pictures, models and descriptions of truck manufacturers serve only for comparison purposes. It is by no means allowed to use as some original reference towards vehicle owners.

RATIOS:

I	10,24 - 0,74	III	12,91 - 1,00
II	10,25 - 0,79	IV	12,92 - 1,00

Fig.	MAET-No.	MAN-No.	ZF-No.	DESCRIPTION	Q-Ty.	Ratio	Note	9S109 (1304)
1		81 96502 0934	0750 111 149	Oil Seal D.48x65x10	x1			■
2		81 93420 0203	0750 117 079	Bearing D.66,6x117,4x30,1	x1			■
3			1304 202 170	Input Shaft 27 T.	x1	I&II		■
3	00.109.001	89 20022 7117	1304 202 171	Input Shaft 27 T.	x1	I&II		■
3			1304 202 172	Input Shaft 27 T.	x1	I&II		■
3			1304 202 173	Input Shaft 27 T.	x1	I&II		■
3			1304 202 180	Input Shaft 27 T.	x1	I&II		■
3			1304 202 245	Input Shaft 27 T.	x1	I&II		■
3		81 32205 0266	1304 202 168	Input Shaft 26 T.	x1	III&IV		■
3			1304 202 175	Input Shaft 26 T.	x1	III&IV		■
3	00.109.101	81 32205 0196	1304 202 177	Input Shaft 26 T.	x1	III&IV		■
3			1304 202 178	Input Shaft 26 T.	x1	III&IV		■
4		81 93501 0098	0735 371 748	Needle Cage D.32x29,5	x1			■
5	00.109.008	81 32425 0089	1304 304 660	Coupling Body	x2			■
6	00.109.054	81 32420 0137	1304 304 014	Synchronizer Ring	x2		old	■
6	00.109.254	81 32420 0235	1304 304 683	Synchronizer Ring	x2		new	■
7	00.109.032	81 32420 0138	1304 304 051	Synchronizer Hub	x1			■
8	00.109.080	81 32510 0007	1238 304 394	Pressure Block	x3			■
9	00.109.075	81 32523 0081	1249 304 222	Pressure Pin	x3			■
10	00.175.205	81 97601 0895	0732 040 409	Pressure Spring D.6,5x23,5	x3			■
11	00.109.028	81 32402 0136	6002 305 515	Sliding Sleeve	x1			■
12			1304 304 472	Gear 3rd sp. 23 T.	x1	I		■
12		89 20022 0833	1304 304 365	Gear 3rd sp. 24 T.	x1	II		■
12		81 32302 0147	1304 304 571	Gear 3rd sp. 27 T.	x1	III		■
12	00.109.031	81 32301 0745	1304 304 500	Gear 3rd sp. 25 T.	x1	IV		■
13		81 93404 0043	0735 321 011	Needle Cage 60x68x23	x1			■
14	00.109.029	81 93001 0314	1304 304 050	Bushing	x1			■
15		81 93404 0042	0750 115 227	Needle Cage D.75x83x40	x1			■
16			1304 304 367	Gear 2nd sp. 31 T.	x1	I&II		■
16		81 32302 0146	1304 304 570	Gear 2nd sp. 30 T.	x1	III		■
16	00.109.022	81 32301 0744	1304 304 499	Gear 2nd sp. 29 T.	x1	IV		■
17	00.109.108	81 32425 0088	1304 304 408	Coupling Body	x2			■
18	00.109.154	81 32420 0156	1304 304 542	Synchronizer Ring	x2		old	■
18	00.109.354	82 32420 0013	1304 304 681	Synchronizer Ring	x2		new	■
19	00.109.132	81 32420 0207	1304 304 591	Synchronizer Hub	x1			■
20	00.151.080	81 32510 0013	1297 304 436	Pressure Block	x3			■
21	00.175.205	81 97601 0895	0732 040 409	Pressure Spring D.6,5x23,5	x3			■
22	00.109.128	81 32402 0147	1304 304 597	Sliding Sleeve	x1			■
23		81 32301 0706	1304 304 471	Gear 1st Speed	x1	I		■
23			1304 304 369	Gear 1st sp. 33 T	x1	II		■
23		81 32302 0145	1304 304 569	Gear 1st sp. 33 T	x1	III		■
23	00.109.034	81 32301 0743	1304 304 498	Gear 1st sp. 33 T.	x1	IV		■
24		81 93404 0045	0735 320 816	Needle Cage D.75x83x23	x1			■
25	00.109.015	81 32202 0053	1304 304 449	Main Shaft	x1			■
26		81 93402 0093	0735 320 500	Needle Cage D.75x83x35	x1			■
27			1304 304 428	Low Gear sp. 38 T.	x1	I&II		■
27		81 32302 0143	1304 304 543	Low Gear sp.	x1	III		■
27		81 32301 0741	1304 304 426	Low Gear sp. 37 T.	x1	IV		■
28	00.109.232	81 32403 0084	1304 304 443	Synchronizer Hub	x1			■

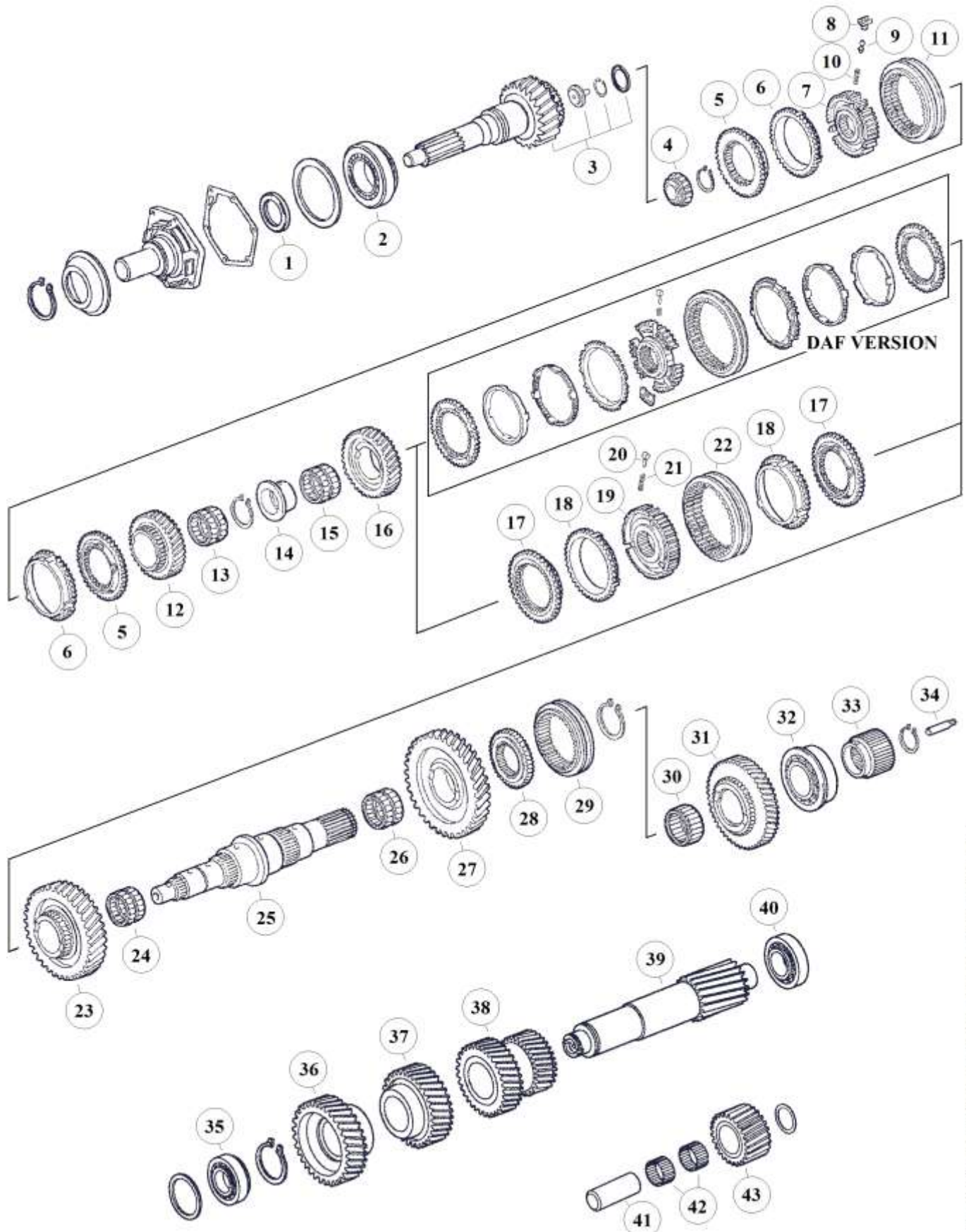
Special for MAN

The stated names, reference numbers, symbols, pictures, models and descriptions of truck manufacturers serve only for comparison purposes. It is by no means allowed to use as some original reference towards vehicle owners.

NOTES:

HIGH END GEARS

Parts for gearbox: 9S109



The stated names, reference numbers, symbols, pictures, models and descriptions of truck manufacturers serve only for comparison purposes. It is by no means allowed to use as some original reference towards vehicle owners.

RATIOS:

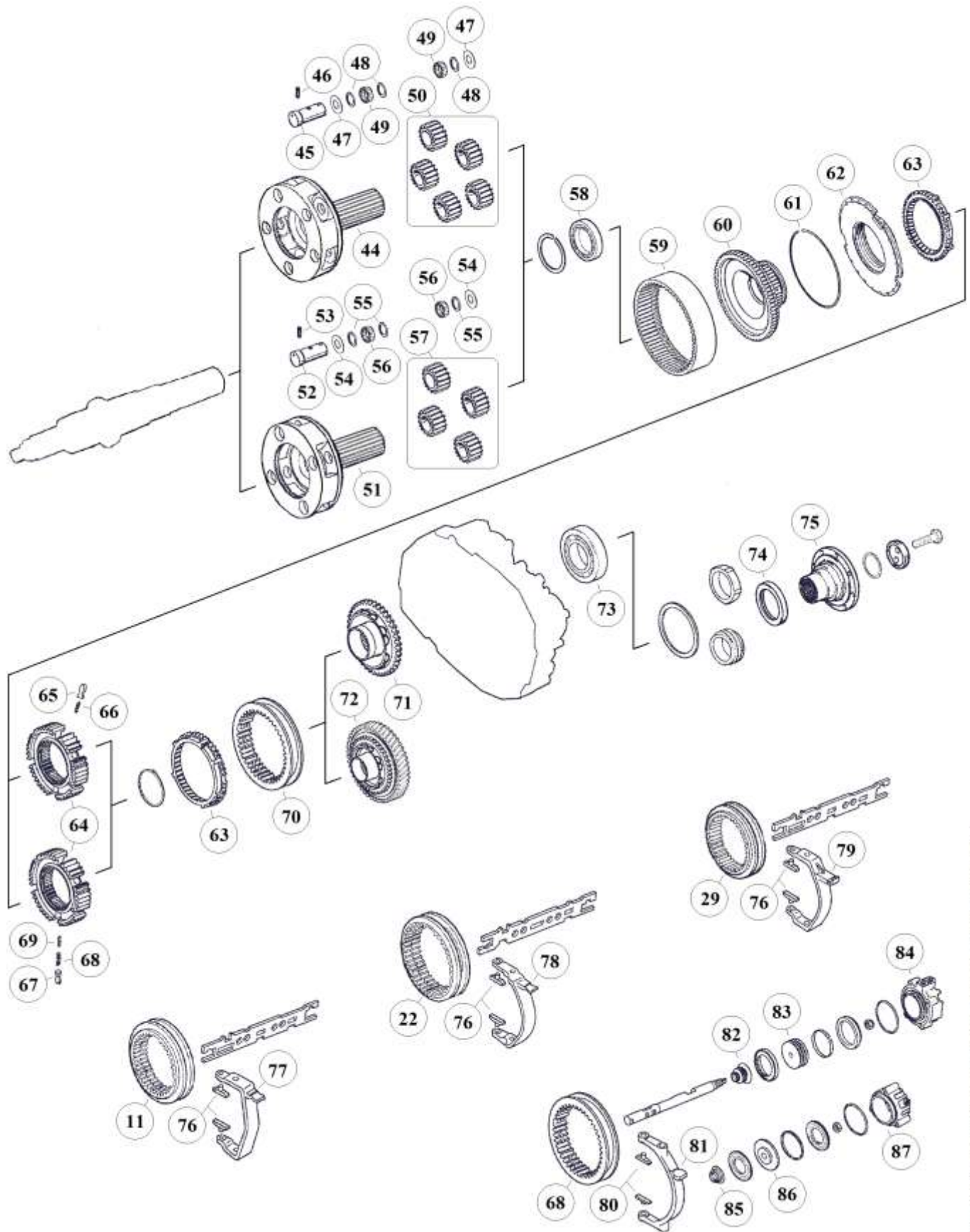
I	10,24 - 0,74	III	12,91 - 1,00
II	10,25 - 0,79	IV	12,92 - 1,00

Fig.	MAET-No.	MAN-No.	ZF-No.	DESCRIPTION	Q-Ty.	Ratio	Note	9S109 (1304)
29	00.109.228	81 32402 0143	1304 304 444	Sliding Sleeve	x1			■
30		81 93404 0044	0750 115 225	Needle Cage D.60x68x39	x1			■
31			1304 304 437	Reverse Gear 35 T.	x1	I&II		■
31		81 32302 0144	1304 304 553	Reverse Gear	x1	III		■
31	00.109.035	81 32301 0742	1304 304 435	Reverse Gear 32 T.	x1	IV		■
32		81 93420 0313	0735 371 605	Bearing D.50,8x104,7x30,1	x1			■
33	00.109.044	81 32301 0710	1304 304 448	Sun Gear 34 T.	x1			■
34	00.119.243	81 32562 0146	1312 304 150	Oil Tube	x1			■
35		81 93420 0335	0735 371 749	Bearing D.40x80x32	x1			■
36	00.109.012		1304 303 285	Constant Gear 33 T.	x1	I&II		■
36	00.109.112	81 32301 0740	1304 303 272	Constant Gear 36 T.	x1	III&IV		■
37			1304 303 210	Gear 3rd sp. 38 T.	x1	I		■
37			1304 303 171	Gear 3rd sp. 37 T.	x1	II		■
37		81 32302 0142	1304 303 287	Gear 3rd sp. 28 T.	x1	III		■
37	00.109.025	81 32301 0739	1304 303 244	Gear 3rd sp. 27 T.	x1	IV		■
38	00.109.020		1304 303 209	Twin Gear 1st-2nd 28-21 T.	x1	I		■
38			1304 303 172	Twin Gear 1st-2nd	x1	II		■
38		81 32303 0035	1304 303 286	Twin Gear 1sp-2nd	x1	III		■
38	00.109.120	81 32303 0032	1304 303 243	Twin Gear 1st-2nd 19-23 T.	x1	IV		■
39	00.109.227		1304 303 269	Counter Shaft 16 T.	x1	I&II		■
39	00.109.127	81 32206 0145	1304 303 268	Counter Shaft 14 T.	x1	III		■
39	00.109.027	81 32206 0076	1304 303 267	Counter Shaft 14 T.	x1	IV		■
40		81 93420 6029	0750 117 083	Bearing D.50,8x95,2x27,7	x1			■
41	00.175.039	81 91001 0549	1304 305 030	Reverse Idler Pin	x1			■
42		81 93404 0047	0735 358 192	Needle Cage D.40x60x26	x2			■
43	00.119.029	91 32315 0056	1304 305 043	Reverse Idler Gear 22 T.	x1	I&II		■
43		81 32315 0066	1304 305 045	Reverse Idler Gear	x1	III		■
43		81 32315 0049	1304 305 044	Reverse Idler Gear	x1	IV		■

Special for MAN

The stated names, reference numbers, symbols, pictures, models and descriptions of truck manufacturers serve only for comparison purposes. It is by no means allowed to use as some original reference towards vehicle owners.

NOTES:



The stated names, reference numbers, symbols, pictures, models and descriptions of truck manufacturers serve only for comparison purposes. It is by no means allowed to use as some original reference towards vehicle owners.

RATIOS:

I	10,24 - 0,74	III	12,91 - 1,00
II	10,25 - 0,79	IV	12,92 - 1,00

Fig.	MAET-No.	MAN-No.	ZF-No.	DESCRIPTION	Q-Ty.	Ratio	Note	9S109 (1304)
44			1304 232 091	Planet Carrier	x1	(a)		■
45	00.109.202	81 32523 0153	1304 332 111	Planet Pin HO	x5	(a)		■
46	00.119.220		0631 329 037	Lock Pin 4x26	x5	(a)		■
47	00.159.203	81 90713 0038	0501 304 692	Thrust Washer 1,50	x10	(a)		■
48	00.159.204	81 90713 0037	0730 103 102	Washer 1,50	x15	(a)		■
49	00.119.205	81 93403 0020	0735 470 115	Needle D.5x15,30	x200	(a)		■
50	00.109.206		1304 232 025	Planet Gear Set	x1	(a)		■
51	00.109.201	81 37501 0044	1304 232 095	Planet Carrier	x1	(b)		■
52	00.109.202	81 32523 0153	1304 332 111	Planet Pin	x4	(b)		■
53	00.119.220		0631 329 037	Lock Pin 4x26	x4	(b)		■
54	00.159.203	81 90713 0038	0501 304 692	Thrust Washer 1,50	x8	(b)		■
55	00.159.204	81 90713 0037	0730 103 102	Washer 1,50	x12	(b)		■
56	00.119.205	81 93403 0020	0735 470 115	Needle D.5x15,30	x160	(b)		■
57		81 37505 6008	1304 232 037	Planet Gear Set	x1	(b)		■
58		81 93410 0078	0735 340 080	Bearing D.70x90x10	x1		(Q)	■
58		81 93410 0083	0750 116 165	Bearing D.80x110x16	x1		(R)	■
59	00.109.207	81 32301 0863	1304 332 178	Carrier Crown 86 T.	x1			■
60	00.109.204	81 37511 0004	1304 332 060	Intermediate Carrier 86 T.	x1		(Q)	■
60	00.119.204	81 32211 0005	1304 332 215	Intermediate Carrier 86 T.	x1		(R)	■
61	00.119.298	81 90820 0485	0730 505 140	Lock Ring	x1			■
62	00.109.208	81 32425 0090	1304 233 005	Coupling Flange	x1		(Q)	■
62	00.109.308	84 32425 0001	1304 233 006	Coupling Flange	x1		(R)	■
63	00.109.210	81 32420 0140	1304 333 005	Synchronizer Ring	x2		(Q) old	■
63	00.109.310		1304 333 021	Synchronizer Ring	x2		(Q) new	■
63	00.112.210	81 32420 0096	1296 333 022	Synchronizer Ring	x2		(R) old	■
63	00.151.210	81 32420 0236	1296 333 045	Synchronizer Ring	x2		(R) new	■
64	00.109.211	81 32420 0139	1304 332 066	Synchronizer Hub	x1		(Q)	■
64	00.151.211	81 32420 0152	1313 333 001	Synchronizer Hub	x1		(R)	■
65	00.168.075	81 32510 0005	1240 304 278	Pressure Block	x6		(R)	■
66	00.168.076	81 97601 0757	0732 040 385	Pressure Spring De.6x34	x6		(R)	■
67	00.168.075	81 32510 0005	1240 304 278	Pressure Block	x9		(Q)	■
68	00.168.076	81 97601 0757	0732 040 385	Pressure Spring De.6x34	x9		(Q)	■
69	00.168.074	81 97601 0758	0732 040 386	Pressure Spring De.3x34	x9		(Q)	■
70	00.109.212	81 32402 0137	1304 332 089	Sliding Sleeve	x1		(Q)	■
70	00.119.328	84 32402 0001	1304 333 011	Sliding Sleeve	x1		(R)	■
71	00.109.213	81 32425 0091	1304 332 075	Coupling Body	x1		(Q)	■
71	00.119.213	81 32425 0143	1304 233 013	Coupling Body	x1		(R)	■
72	00.109.313	84 32425 0002	1304 232 085	Retarder Gear	x1		(R) w. Ret.	■
73		81 93410 0077	0750 116 048	Bearing D.78x130x25	x1		(Q)	■
73			0750 116 197	Bearing D.80x140x26	x1		(R)	■
74		81 96502 0935	0734 319 439	Oil Seal D.95x115x10	x1			■
75	00.119.065	81 39115 0297	1304 338 059	Output Flange D.150-4 H.	x1		(Q)	■
75		81 39115 0303	1304 338 060	Output Flange D.180-4 H.	x1		(Q)	■
75	00.119.265	81 39115 0296	1304 338 050	Output Flange D.180-4 H.	x1		(Q)	■
75			1304 338 053	Output Flange D.180-8 H.	x1		(Q)	■
75	00.119.465		1304 338 052	Output Flange D.180-10 H.	x1		(Q)	■
75			1304 338 067	Output Flange D.204-4 H.	x1		(Q)	■
75	00.119.565		1304 338 056	Output Flange D.204-4 H.	x1		(Q)	■
75			1304 338 109	Output Flange D.180-4 H.	x1		(R)	■

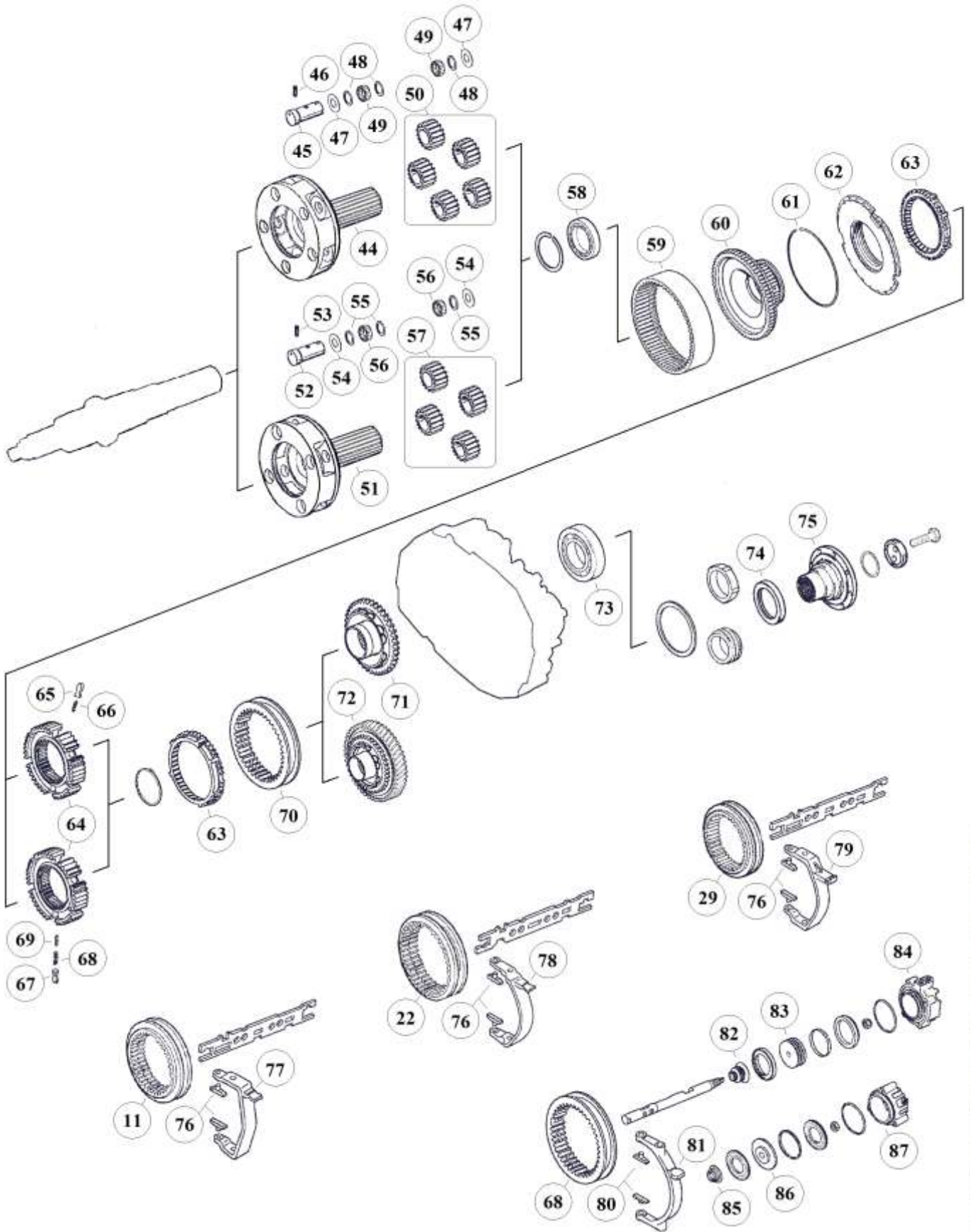
Special for MAN

The stated names, reference numbers, symbols, pictures, models and descriptions of truck manufacturers serve only for comparison purposes. It is by no means allowed to use as some original reference towards vehicle owners.

6

NOTES:

(a)	5 Planet Version	(Q)	Use only with (Q)-Parts. DO NOT MIX
(b)	4 Planet Version	(R)	Use only with (R)-Parts. DO NOT MIX



The stated names, reference numbers, symbols, pictures, models and descriptions of truck manufacturers serve only for comparison purposes. It is by no means allowed to use as some original reference towards vehicle owners.

RATIOS:

I	10,24 - 0,74	III	12,91 - 1,00
II	10,25 - 0,79	IV	12,92 - 1,00

Fig.	MAET-No.	MAN-No.	ZF-No.	DESCRIPTION	Q-Ty.	Ratio	Note	9S109 (1304)
75	00.119.765	83 39115 0500	1304 338 097	Output Flange D.180-4 H.	x1		(R)	■
76	00.109.180	81 32526 0027	1290 306 066	Sliding Pads	x6		(Bronze)	■
77	00.119.188	81 32515 0085	1304 306 010	Fork	x1			■
77	00.119.288		1304 306 044	Fork	x1			■
77		81 32515 0090	1304 306 096	Fork	x1			■
78	00.119.488	81 32515 0079	1304 306 043	Fork	x1			■
78	00.119.388	81 32515 0083	1304 306 009	Fork	x1			■
79		81 32515 0084	1304 306 077	Fork	x1			■
80	00.168.059	81 32526 0019	1272 334 003	Sliding Pads	x2		(Bronze)	■
81	00.119.688	81 32516 0118	1304 334 039	Fork	x1		(Q)	■
81	00.119.788	84 32516 0001	1304 334 063	Fork	x1		(R)	■
82		81 32540 0031	0750 112 047	Oil Seal	x1		(Q)	■
83		81 32639 0053	1304 334 072	Piston	x1		(Q)	■
84		81 32103 0090	1304 334 061	Cylinder	x1		(Q)	■
85		81 32540 0031	0750 112 047	Oil Seal	x1		(R)	■
86		81 32639 0064	1315 334 041	Piston	x1		(R)	■
87		81 32638 0039	1304 334 079	Cylinder	x1		(R)	■

Special for MAN

The stated names, reference numbers, symbols, pictures, models and descriptions of truck manufacturers serve only for comparison purposes. It is by no means allowed to use as some original reference towards vehicle owners.



NOTES:

(a)	5 Planet Version	(Q)	Use only with (Q)-Parts. DO NOT MIX
(b)	4 Planet Version	(R)	Use only with (R)-Parts. DO NOT MIX

HIGH END GEARS