

**Suitable to:**

**ZF 16S130 EcoSplit**

**ZF 16S160 EcoSplit**

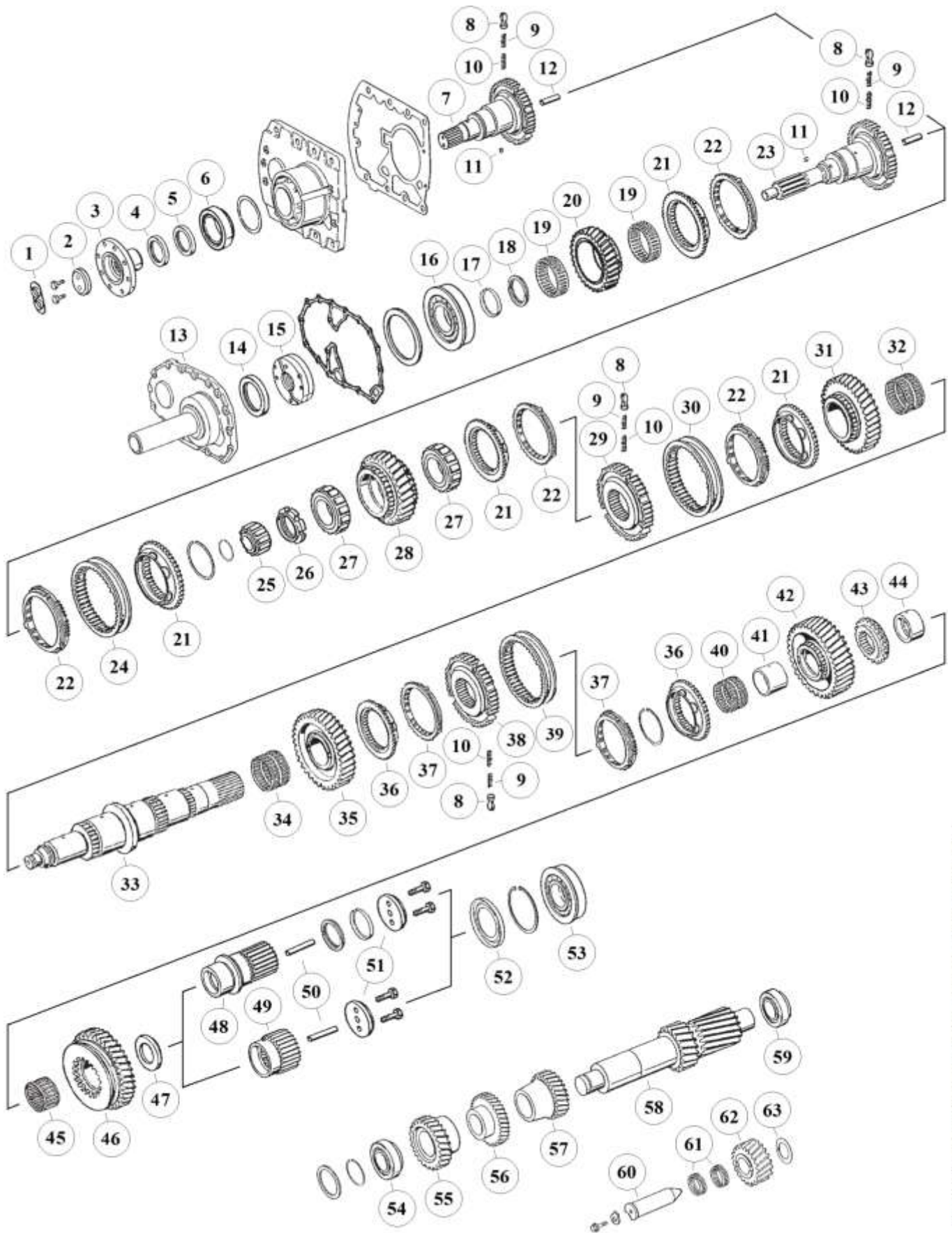
**ZF 16S190 EcoSplit**

**MAN**



# HIGH END GEARS

## Parts for gearbox: 16S130,160,190



The stated names, reference numbers, symbols, pictures, models and descriptions of truck manufacturers serve only for comparison purposes. It is by no means allowed to use as some original reference towards vehicle owners.

### RATIOS:

16S130 (1295)	I: 10,14 - 0,72	II: 11,46 - 0,85	III: 13,68 - 1,00	IV: 14,29 - 0,82	
16S160 (1297)		II: 11,46 - 0,85	III: 13,68 - 1,00	IV: 14,29 - 0,82	V: 17,06 - 1,00
16S190 (1297)		II: 11,46 - 0,85	III: 13,68 - 1,00	IV: 14,29 - 0,82	V: 17,06 - 1,00

Fig.	MAET-No.	MAN-No.	ZF-No.	DESCRIPTION	Q-Ty.	Ratio	Note			
								16S130 (1295)	16S160 (1297)	16S190 (1297)
1		81 90801 0277	1269 302 164	Trust Washer	x1					
2		81 32312 0735	1269 302 065	Trust Washer	x1					
3			1286 304 026	Input Flange D.150-8 H.	x1					
4		81 96503 0012	0734 300 140	Oil Seal 70x90x10	x1					
5		06 56279 0089	0634 310 648	Oil Seal 70x90x10	x1					
6		81 93420 0222	0750 117 651	Bearing 50x90x24,7	x1					
7	00.191.401	81 32205 0187	1297 202 044	Input Shaft	x1					
8	00.168.075	81 32510 0005	1240 304 278	Pressure Block	x3					
9	00.168.074	81 97601 0758	0732 040 386	Pressure Spring De.3x34	x3					
10	00.168.076	81 97601 0757	0732 040 385	Pressure Spring De.6x34	x3					
11	00.151.094	06 32540 0118	0635 470 012	Needle	x1					
12			0730 062 323	Oil Tube	x1					
13		81 32522 0025	1297 302 013	Front Cover	x1					
13		81 32522 0047	1297 302 042	Front Cover	x1					
13		81 32522 0036	1297 302 239	Front Cover	x1					
14		81 96502 0225	0750 111 002	Oil Seal 48x75x8	x1					
14			0634 310 733	Oil Seal 90x110x13	x1		(a)			
14		81 96503 0342	0734 310 386	Oil Seal 55x75x8	x1		(b)			
15	00.116.024	81 32563 0005	1295 202 041	Oil Pump	x1					
16		81 93420 0190	0750 118 131	Bearing D.80x150x27,50	x1					
17	00.159.005	81 90820 0141	0730 061 816	Washer	x1					
17	00.159.105	81 90820 0370	0730 062 579	Washer S.4,20 mm	x1					
18	00.113.112	81 32521 0062	0730 103 244	Split Ring T.4,30 mm	x1		(c)			
18		81 32521 0107	0730 103 935	Split Ring T.3,80 mm	x1		(c)			
18	00.113.111	81 32521 0122	0730 105 156	Split Ring T.4,00 mm	x1		(d)			
19		81 93402 0067	0735 320 786	Needle Cage D.88x96x24,50	x2					
19		81 93402 0102	0735 320 896	Needle Cage D.88x96x29	x2					
20	00.113.003	81 32301 0585	1295 302 071	Constant Gear 28 T.	x1	I&III				
20	00.113.004	81 32301 0428	1295 302 070	Constant Gear 30 T.	x1	II				
20	00.113.103	81 32301 0599	1295 302 122	Constant Gear 29 T.	x1	IV				
20	00.116.049	82 32301 0070	1297 302 177	Constant Gear 30 T.	x1	II				
20	00.116.048	81 32301 0563	1297 302 176	Constant Gear 28 T.	x1	III				
20	00.191.012	81 32301 0589	1297 302 250	Constant Gear 29 T.	x1	IV				
20	00.191.112		1297 302 241	Constant Gear 26 T.	x1	V				
21	00.116.006	81 32425 0071	1295 304 278	Coupling Body	x1					
22	00.116.009	81 32420 0081	1295 304 004	Synchronizer Ring	x2	old				
22	00.116.109		1304 304 686	Synchronizer Ring	x2	new				
23	00.116.102		1295 202 004	Input Shaft	x1					
23		81 32205 0147	1295 202 007	Input Shaft	x1					
23		81 32205 0175	1295 202 039	Input Shaft	x1					
23		81 32205 0173	1295 221 001	Input Shaft NMV130(Clutch PTO)	x1					
23	00.191.501	81 32205 0149	1297 202 008	Input Shaft	x1					
23	00.191.201	81 32205 0176	1297 202 011	Input Shaft	x1					
23		81 32205 0212	1297 202 045	Input Shaft	x1					
23		81 32205 0194	1297 202 061	Input Shaft	x1					
23			1297 221 006	Input Shaft NMV130(Clutch PTO)	x1					
23			1297 221 008	Input Shaft NMV130(Clutch PTO)	x1					
23			1297 221 010	Input Shaft NMV130(Clutch PTO)	x1					
24	00.116.028	81 32402 0101	1295 304 002	Sliding Sleeve	x1					

Special for MAN

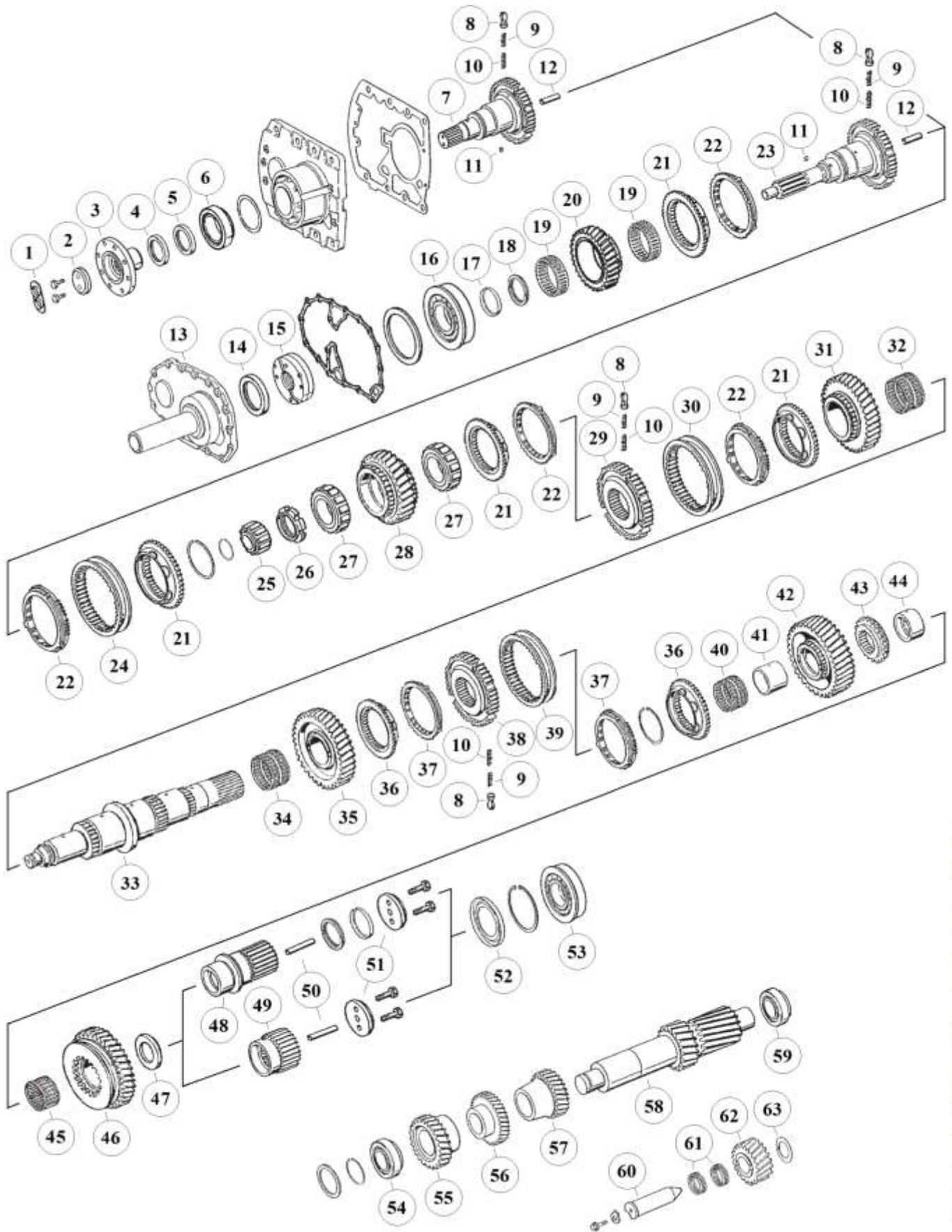
The stated names, reference numbers, symbols, pictures, models and descriptions of truck manufacturers serve only for comparison purposes. It is by no means allowed to use as some original reference towards vehicle owners.

NOTES:

(a)	Only for Input Shaft 1295 221 001	(e)	Old. Use Items marked (e) together
(b)	Only for Input Shaft 1295 202 039	(f)	Alternativ use 1246 304 278 w.42 T
(c)	Together with Washer 0730 061 816	(g)	Alternativ use 1296 304 135 w.54 T.
(d)	Together with Washer 0730 062 579	(h)	Old. Use Items marked (h) together

# HIGH END GEARS

## Parts for gearbox: 16S130,160,190



The stated names, reference numbers, symbols, pictures, models and descriptions of truck manufacturers serve only for comparison purposes. It is by no means allowed to use as some original reference towards vehicle owners.

### RATIOS:

16S130 (1295)	I: 10,14 - 0,72	II: 11,46 - 0,85	III: 13,68 - 1,00	IV: 14,29 - 0,82	
16S160 (1297)		II: 11,46 - 0,85	III: 13,68 - 1,00	IV: 14,29 - 0,82	V: 17,06 - 1,00
16S190 (1297)		II: 11,46 - 0,85	III: 13,68 - 1,00	IV: 14,29 - 0,82	V: 17,06 - 1,00



Fig.	MAET-No.	MAN-No.	ZF-No.	DESCRIPTION	Q-Ty.	Ratio	Note			
								16S130 (1295)	16S160 (1297)	16S190 (1297)
25		81 93404 0028	0750 118 010	Roller Cage D.30x60x25,50	x1			■		
25		81 93420 0174	0750 118 038	Roller Cage D.35x68x27,50	x1				■	■
26	00.113.030	81 90620 0073	0737 502 092	Grooved Nut M60x1,5	x1			■	■	■
27		81 93420 0133	0750 118 005	Roller Cage D.63x97,5x34,80	x2			■		
27		81 93420 0188	0750 118 220	Roller Cage D.63x97,5x37,50	x2				■	■
28	00.113.013	81 32301 0587	1295 304 135	Gear 4th sp. 30 T.	x1	I&III		■		
28	00.113.014	81 32301 0435	1295 304 136	Gear 4th sp. 28 T.	x1	II		■		
28	00.113.113	81 32301 0611	1295 304 236	Gear 4th sp. 26 T.	x1	IV		■		
28	00.116.050	82 32202 0000	1297 304 267	Gear 4th sp. 28 T.	x1	II			■	■
28	00.116.014	81 32301 0700	1297 304 260	Gear 4th sp. 30 T.	x1	III			■	■
28	00.191.014	81 32301 0623	1297 304 318	Gear 4th sp. 26 T.	x1	IV			■	■
28	00.191.114		1297 304 413	Gear 4th sp. 29 T.	x1	V			■	■
29	00.116.011	81 32420 0083	1297 304 031	Synchronizer Hub	x1			■	■	■
30	00.116.028	81 32402 0101	1295 304 002	Sliding Sleeve	x1			■	■	■
31			1295 304 269	Gear 3rd sp. 25 T.	x1	I		■		
31	00.113.049	81 32301 0434	1295 304 127	Gear 3rd sp. 32 T.	x1	II&IV		■		
31	00.113.031	81 32301 0586	1295 304 128	Gear 3rd sp. 34 T.	x1	III		■		
31	00 116 041	81 32301 0621	1297 304 266	Gear 3rd sp. 32 T.	x1	II&IV			■	■
31	00.116.040	81 32301 0699	1297 304 261	Gear 3rd sp. 34 T.	x1	III			■	■
31	00.191.031		1297 304 414	Gear 3rd sp. 34 T.	x1	V			■	■
32		81 93402 0068	0735 320 418	Needle Cage D.82x90x49.	x1			■		
32		81 93402 0098	0735 320 451	Needle Cage D.82x90x60.	x1				■	■
33			1295 304 273	Main Shaft	x1	I		■		
33	00.113.015	81 32202 0041	1295 304 245	Main Shaft	x1	II&III		■		
33		81 32202 0051	1295 304 250	Main Shaft	x1	IV		■		
33	00.191.015	81 32202 0060	1297 304 181	Main Shaft	x1	II&III			■	■
33	00.191.115	81 32202 0052	1297 304 193	Main Shaft	x1	IV&V			■	■
34		81 93402 0098	0735 320 451	Needle Cage D.82x90x60	x1	I		■		
34		81 93402 0068	0735 320 418	Needle Cage D.82x90x49	x1	II&III&IV		■		
34		81 93402 0099	0735 320 452	Needle Cage D.82x90x55	x1				■	■
35			1295 304 271	Gear 2nd sp. 34 T.	x1	I		■		
35	00.113.050	81 32301 0432	1295 304 120	Gear 2nd sp. 37 T.	x1	II&IV		■		
35		81 32301 0738	1295 304 121	Gear 2nd sp. 38 T.	x1	III		■		
35	00.116.043	81 32301 0763	1297 304 269	Gear 2nd sp. 37 T.	x1	II&IV			■	■
35	00.116.042		1297 304 442	Gear 2nd sp. 38 T.	x1	III&V			■	■
36	00.113.052	81 32425 0084	1297 304 196	Coupling Body	x2			■	■	■
36	00.116.006	81 32425 0071	1295 304 278	Coupling Body	x2		(e)	■		
37	00.116.110	81 32420 0120	1296 304 135	Synchronizer Ring 54 T.	x2		(f)	■	■	■
37	00.116.010		1246 304 278	Synchronizer Ring 42 T.	x2		(g)	■	■	■
37	00.116.009	81 32420 0081	1295 304 004	Synchronizer Ring.	x2		(e)	■		
38	00.191.132	81 32420 0122	1297 304 195	Synchronizer Hub.	x1			■	■	■
38	00.116.011	81 32420 0083	1297 304 031	Synchronizer Hub.	x1		(e)	■		
39	00.168.051	81 32402 0080	1257 304 020	Sliding Sleeve	x1			■	■	■
39	00.116.028	81 32402 0101	1295 304 002	Sliding Sleeve	x1		(e)	■		
40			0735 320 548	Needle Cage D.70x78x46	x1	I		■		
40		81 93402 0070	0735 320 496	Needle Cage D.70x78x55	x1	II&III&IV		■		
40		81 93402 0100	0735 320 487	Needle Cage D.82x90x68	x1				■	■
41	00.191.085	81 32220 0070	1297 304 035	Bushing	x1				■	■
42			1295 304 270	Gear 1st sp. 41 T.	x1	I		■		

**Special for MAN**

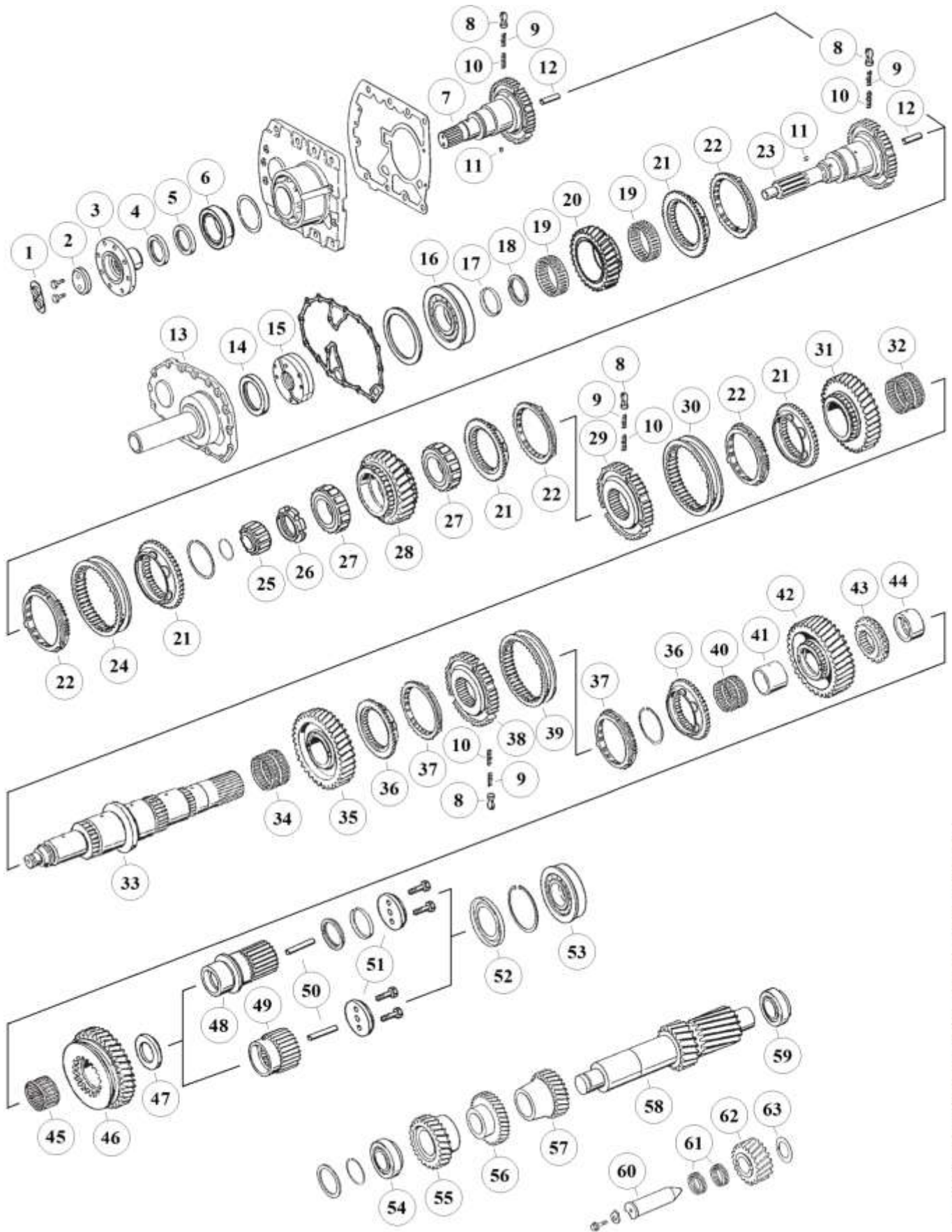
The stated names, reference numbers, symbols, pictures, models and descriptions of truck manufacturers serve only for comparison purposes. It is by no means allowed to use as some original reference towards vehicle owners.

**NOTES:**

(a)	Only for Input Shaft 1295 221 001	(e)	Old. Use Items marked (e) together
(b)	Only for Input Shaft 1295 202 039	(f)	Alternativ use 1246 304 278 w.42 T
(c)	Together with Washer 0730 061 816	(g)	Alternativ use 1296 304 135 w.54 T.
(d)	Together with Washer 0730 062 579	(h)	Old. Use Items marked (h) together

# HIGH END GEARS

## Parts for gearbox: 16S130,160,190



The stated names, reference numbers, symbols, pictures, models and descriptions of truck manufacturers serve only for comparison purposes. It is by no means allowed to use as some original reference towards vehicle owners.

### RATIOS:

16S130 (1295)	I: 10,14 - 0,72	II: 11,46 - 0,85	III: 13,68 - 1,00	IV: 14,29 - 0,82	
16S160 (1297)		II: 11,46 - 0,85	III: 13,68 - 1,00	IV: 14,29 - 0,82	V: 17,06 - 1,00
16S190 (1297)		II: 11,46 - 0,85	III: 13,68 - 1,00	IV: 14,29 - 0,82	V: 17,06 - 1,00

Fig.	MAET-No.	MAN-No.	ZF-No.	DESCRIPTION	Q-Ty.	Ratio	Note			
								16S130 (1295)	16S160 (1297)	16S190 (1297)
42	00.113.027	81 32301 0496	1295 304 203	Gear 1st sp. 44 T.	x1	II&IV				
42		81 32301 0433	1295 304 123	Gear 1st sp. 44 T.	x1	II	(h)			
42	00.113.026	81 32301 0697	1295 304 202	Gear 1st sp. 47 T.	x1	III				
42	00.116.029	81 32301 0764	1297 304 270	Gear 1st sp. 44 T.	x1	II&IV				
42	00.116.019	81 32301 0698	1297 304 441	Gear 1st sp. 47 T.	x1	III&V				
43		81 32425 0063	1295 304 024	Follower Ring	x1	I				
43	00.191.138	81 32425 0072	1295 304 206	Follower Ring	x1	II&III&IV				
43		81 32425 0063	1295 304 024	Follower Ring	x1	II	(h)			
43	00.191.038	81 32425 0075	1297 304 154	Follower Ring	x1					
44	00 191 285	81 32220 0056	1295 304 012	Bushing D.60x75x38	x1	I&II&III				
44	00.191.185	81 32220 0059	1297 304 034	Bushing	x1	II&III				
45		81 93402 0088	0750 115 059	Needle Cage D.75x83x40	x1					
45		81 93402 0074	0735 320 486	Needle Cage D.78x86x44	x1					
46			1295 304 272	Reverse Gear 39 T.	x1	I				
46	00.113.028	81 32301 0494	1295 304 201	Reverse Gear 39 T.	x1	II&IV				
46		81 32301 0438	1295 304 115	Reverse Gear 39 T.	x1	II	(h)			
46	00.113.128	81 32301 0778	1295 304 200	Reverse Gear 38 T.	x1	III				
46	00.191.035	81 32301 0499	1297 304 149	Reverse Gear 39 T.	x1	II&IV				
46	00.191.135		1297 304 148	Reverse Gear 38 T.	x1	III&V				
47		81 32312 0748	1295 304 240	Thrust Washer	x1	I&II&III				
47		81 32312 0663	1295 304 125	Thrust Washer	x1	II	(h)			
47		81 91710 0379	1297 304 381	Thrust Washer	x1	II&III				
48		81 32301 0603	1295 304 251	Sun Gear 24 T.	x1	IV				
48	00.191.044	81 32301 0624	1297 304 439	Sun Gear 24 T.	x1	IV&V				
49	00.113.044	81 32301 0497	1295 304 248	Sun Gear 27 T.	x1	I&II&III				
49	00.116.044	81 32301 0466	1297 304 187	Sun Gear 27 T.	x1	II&III				
50	00.110.016	81 32562 0008	0730 061 842	Oil Tube	x1					
51	00.159.012	81 32312 0710	1272 304 021	Thrust Washer	x1					
52		81 32147 0008	1295 304 129	Oil Collector	x1	I&II&III				
52		81 32312 0854	1297 301 004	Oil Collector	x1	IV				
52		81 32312 0854	1297 301 004	Oil Collector	x1					
53		81 93420 0129	0750 118 153	Bearing D.60x130x31	x1	I&II&III				
53		81 93420 0177	0750 118 137	Bearing D.80x140x26	x1	IV				
53		81 93420 0220	0750 118 006	Bearing D.65x140x33	x1	II&III				
53		81 93420 0186	0750 118 180	Bearing D.80x140x33	x1	IV&V				
54		81 93420 0132	0750 117 010	Bearing D.50,80x100x35	x1					
55	00.113.017	81 32301 0696	1295 303 101	Constant Gear 34 T.	x1	I&III				
55	00.113.018	81 32301 0430	1295 303 036	Constant Gear 31 T.	x1	II				
55	00.113.117	81 32301 0600	1295 303 060	Constant Gear 32 T.	x1	IV				
55	00.116.036	81 32301 0460	1297 303 074	Constant Gear 31 T.	x1	II				
55	00.116.035	81 32301 0565	1297 303 066	Constant Gear 34 T.	x1	III				
55	00.191.017	81 32301 0590	1297 303 098	Constant Gear 32 T.	x1	IV				
55	00.191.117		1297 303 086	Constant Gear 35 T.	x1	V				
56	00.113.016	81 32301 0737	1295 303 027	Gear 4th sp. 31 T.	x1	I&III				
56	00.113.019	81 32301 0431	1295 303 028	Gear 4th sp. 34 T.	x1	II				
56	00.113.116	81 32301 0598	1295 303 094	Gear 4th sp. 35 T.	x1	IV				
56	00.116.021	82 32301 0072	1297 303 072	Gear 4th sp. 34 T.	x1	II				
56	00.116.020	81 32301 0564	1297 303 065	Gear 4th sp. 31 T.	x1	III				
56	00.191.024	81 32301 0619	1297 303 097	Gear 4th sp. 35 T.	x1	IV				

**Special for MAN**

The stated names, reference numbers, symbols, pictures, models and descriptions of truck manufacturers serve only for comparison purposes. It is by no means allowed to use as some original reference towards vehicle owners.

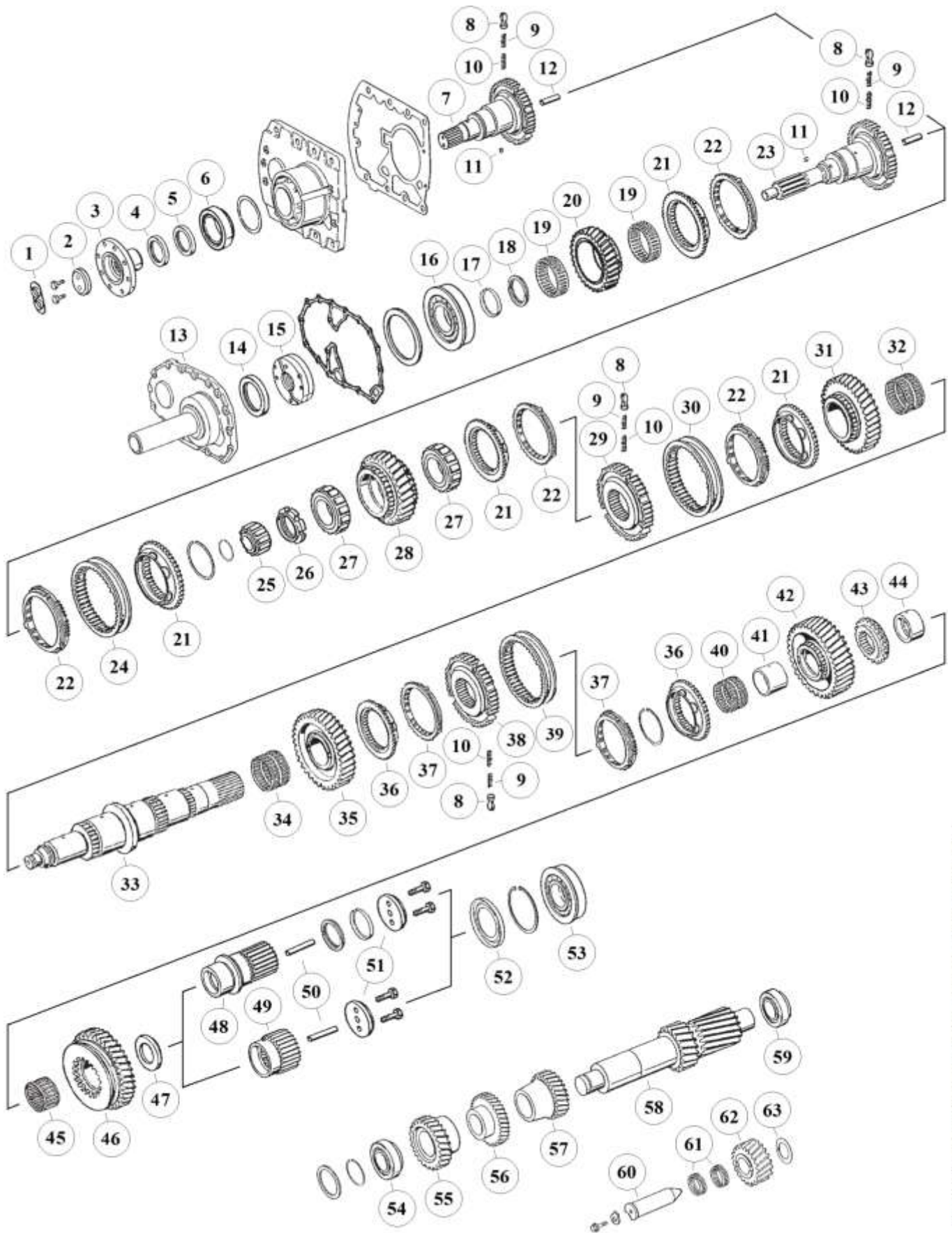
**NOTES:**

(a)	Only for Input Shaft 1295 221 001	(e)	Old. Use Items marked (e) together
(b)	Only for Input Shaft 1295 202 039	(f)	Alternativ use 1246 304 278 w.42 T
(c)	Together with Washer 0730 061 816	(g)	Alternativ use 1296 304 135 w.54 T.
(d)	Together with Washer 0730 062 579	(h)	Old. Use Items marked (h) together



# HIGH END GEARS

## Parts for gearbox: 16S130,160,190



The stated names, reference numbers, symbols, pictures, models and descriptions of truck manufacturers serve only for comparison purposes. It is by no means allowed to use as some original reference towards vehicle owners.

### RATIOS:

16S130 (1295)	I: 10,14 - 0,72	II: 11,46 - 0,85	III: 13,68 - 1,00	IV: 14,29 - 0,82	
16S160 (1297)		II: 11,46 - 0,85	III: 13,68 - 1,00	IV: 14,29 - 0,82	V: 17,06 - 1,00
16S190 (1297)		II: 11,46 - 0,85	III: 13,68 - 1,00	IV: 14,29 - 0,82	V: 17,06 - 1,00



# HIGH END GEARS

## Parts for gearbox: 16S130,160,190

Fig.	MAET-No.	MAN-No.	ZF-No.	DESCRIPTION	Q-Ty.	Ratio	Note			
								16S130 (1295)	16S160 (1297)	16S190 (1297)
56	00.191.124		1297 303 123	Gear 4th sp. 32 T.	x1	V				
57			1295 303 071	Gear 3rd sp. 36 T.	x1	I				
57	00.113.021	81 32301 0429	1295 303 025	Gear 3rd sp. 28 T.	x1	II&IV				
57	00.113.020	81 32301 0777	1295 303 026	Gear 3rd sp. 25 T.	x1	III				
57	00.116.018	81 32301 0618	1297 303 073	Gear 3rd sp. 28 T.	x1	II&IV				
57	00.116.017	81 32301 0682	1297 303 067	Gear 3rd sp. 25 T.	x1	III				
57	00.191.025		1297 303 132	Gear 3rd sp. 26 T.	x1	V				
58			1295 303 072	Counter Shaft	x1	I				
58	00.113.024	81 32206 0060	1295 303 067	Counter Shaft 19-23 T.	x1	II&IV				
58		81 32208 0001	1295 303 045	Counter Shaft 19-23 T.	x1	II	(h)			
58	00.113.023	81 32206 0075	1295 303 066	Counter Shaft 17-20 T.	x1	III				
58	00.116.025	81 32206 0063	1297 303 075	Counter Shaft 19-23 T.	x1	II&IV				
58	00.116.023	81 32206 0071	1297 303 140	Counter Shaft 17-20 T.	x1	III&V				
59		81 93420 0131	0750 117 008	Bearing D.50x110x42	x1					
59		81 93420 0187	0750 117 009	Bearing D.49,2x103,1x43,6	x1					
60	00.151.092	81 32317 0032	1295 305 056	Reverse Idler Pin	x1					
61		81 93402 0066	0750 115 011	Needle Cage D.45x53x21	x2					
62		81 32315 0031	1297 305 003	Reverse Idler Gear 21 T.	x1	I				
62	00.191.036	81 32315 0034	1295 305 051	Reverse Idler Gear 21 T.	x1	II&IV				
62		81 32315 0031	1297 305 003	Reverse Idler Gear 21 T.	x1	II	(h)			
62	00.113.029	81 32315 0038	1295 305 052	Reverse Idler Gear 24 T.	x1	III				
62	00.191.036	81 32315 0034	1295 305 051	Reverse Idler Gear 21 T.	x1	II&IV				
62	00.113.029	81 32315 0038	1295 305 052	Reverse Idler Gear 24 T.	x1	III&V				
63		81 32312 0153	0730 150 064	Thrust Washer	x1					

Special for MAN

The stated names, reference numbers, symbols, pictures, models and descriptions of truck manufacturers serve only for comparison purposes. It is by no means allowed to use as some original reference towards vehicle owners.

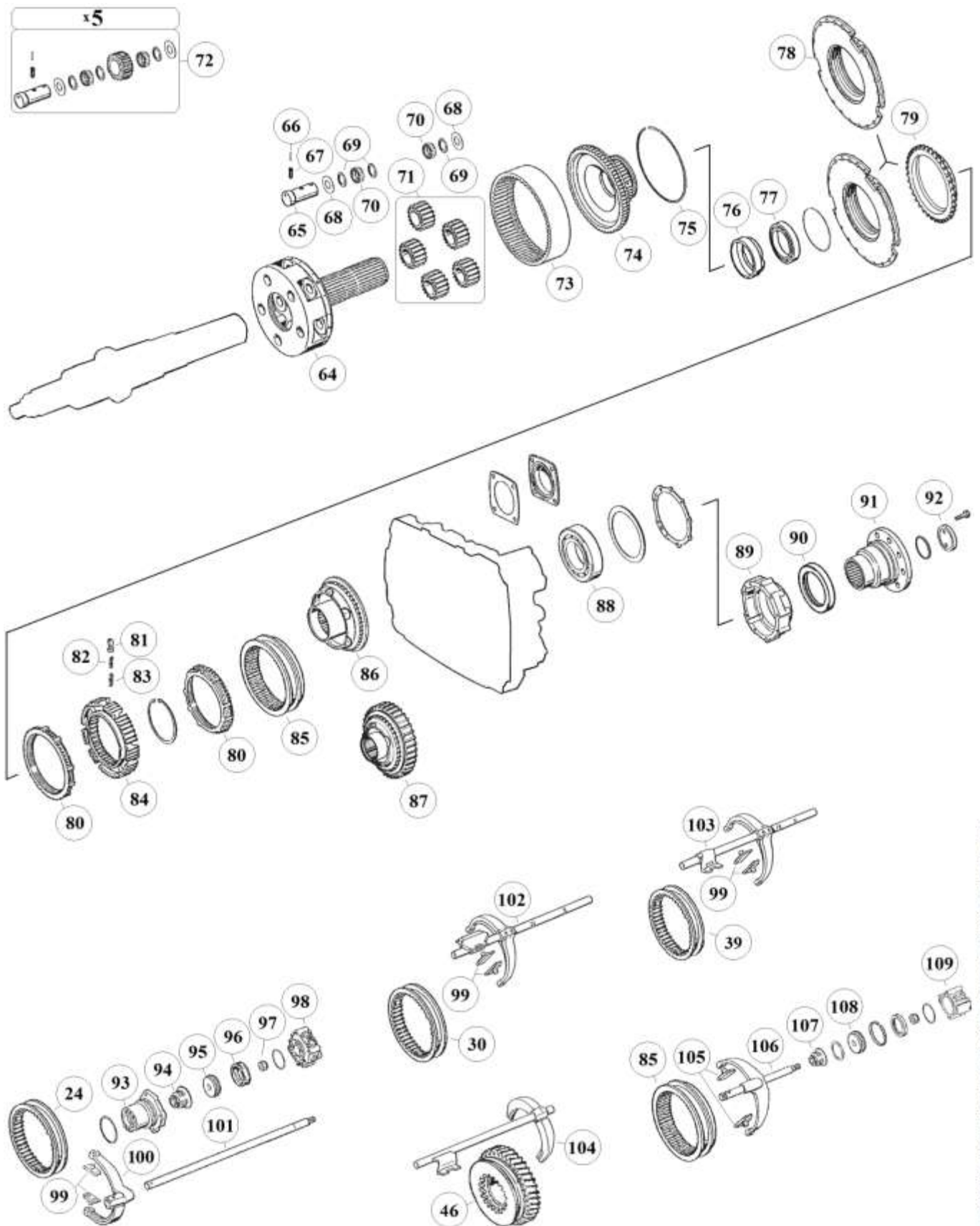


### NOTES:

(a)	Only for Input Shaft 1295 221 001	(e)	Old. Use Items marked (e) together
(b)	Only for Input Shaft 1295 202 039	(f)	Alternativ use 1246 304 278 w.42 T
(c)	Together with Washer 0730 061 816	(g)	Alternativ use 1296 304 135 w.54 T.
(d)	Together with Washer 0730 062 579	(h)	Old. Use Items marked (h) together

# HIGH END GEARS

## Parts for gearbox: 16S130,160,190



The stated names, reference numbers, symbols, pictures, models and descriptions of truck manufacturers serve only for comparison purposes. It is by no means allowed to use as some original reference towards vehicle owners.

### RATIOS:

16S130 (1295)	I: 10,14 - 0,72	II: 11,46 - 0,85	III: 13,68 - 1,00	IV: 14,29 - 0,82	
16S160 (1297)		II: 11,46 - 0,85	III: 13,68 - 1,00	IV: 14,29 - 0,82	V: 17,06 - 1,00
16S190 (1297)		II: 11,46 - 0,85	III: 13,68 - 1,00	IV: 14,29 - 0,82	V: 17,06 - 1,00



Fig.	MAET-No.	MAN-No.	ZF-No.	DESCRIPTION	Q-Ty.	Ratio	Note			
								16S130 (1295)	16S160 (1297)	16S190 (1297)
64	00.116.201	81 32403 0078	1295 232 044	Planet Carrier	1	I&II&III		■		
64		81 32403 0079	1297 232 045	Planet Carrier	1	IV		■		
64	00.116.501	81 32403 0066	1297 232 039	Planet Carrier	1	II&III			■	■
64		81 32403 0079	1297 232 045	Planet Carrier	1	IV&V			■	■
64		81 37501 0043	1316 232 005	Planet Carrier	1	V	(i)			■
65	00.110.202	81 32523 0086	1269 332 036	Planet Pin	5	I&II&III		■		
65	00.116.202	81 32523 0111	1297 332 109	Planet Pin	5	IV		■		
65	00.116.202	81 32523 0111	1297 332 109	Planet Pin	5				■	■
65	00.151.182	81 32523 0160	1312 332 026	Planet Pin	5		(i)			■
66	00.116.220	06 22120 0512	0631 329 017	Lock Pin D.3x24	5			■	■	■
66	00.151.220	06 22120 0513	0631 329 167	Lock Pin D.3x26	5		(i)			■
67	00.116.221	06 22120 0912	0631 329 050	Lock Pin D.5x24	5			■	■	■
67	00.151.221	06 22120 0913	0631 329 051	Lock Pin D.5x26	5		(i)			■
68	00.110.204	81 90712 0494	0501 305 887	Thrust Washer D.29x57,50x1,5	10	I&II&III		■		
68	00.116.223	81 32312 0707	0501 306 212	Thrust Washer D.29x64x1,5	10	IV		■		
68	00.116.223	81 32312 0707	0501 306 212	Thrust Washer D.29x64x1,5	10			■	■	■
68	00.151.083	81 32313 0123	0501 308 981	Thrust Washer	10		(i)			■
69	00.111.201	81 90712 0495	0730 103 846	Washer D.29x39x1,0	15			■	■	■
69	00.151.183	81 32313 0114	0730 107 168	Washer	15		(i)			■
70	00.110.205	81 93403 0010	0735 470 057	Needle Set D.6x14,75 (180 pcs)	1	I&II&III		■		
70	00.116.205	81 32528 0014	0750 119 109	Needle Set D.10x16,80 (120 pcs)	1	IV		■		
70	00.116.205	81 32528 0014	0750 119 109	Needle Set D.10x16,80 (120 pcs)	1				■	■
70	00.151.205	81 93403 0023	0750 119 116	Needle Set D.10x16,80 (140 pcs)	1		(i)			■
71	00.112.206	81 32301 6002	1295 232 027	Planet Gear Set (5 pcs)	1	I&II&III		■		
71	00.191.206	81 32301 6007	1297 232 024	Planet Gear Set (5 pcs)	1	IV		■		
71	00.116.206	81 32301 6003	1297 232 023	Planet Gear Set (5 pcs)	1	II&III			■	■
71	00.191.206	81 32301 6007	1297 232 024	Planet Gear Set (5 pcs)	1	IV&V			■	■
71	00.151.406	81 37505 6009	1312 232 014	Planet Gear Set (5 pcs)	1	V	(i)			■
72	00.112.219		1296 298 904	Repair Kit	1	I&II&III		■		
72	00.116.219		1297 298 912	Repair Kit	1	II&III			■	■
72			1297 298 919	Repair Kit	1	IV&V			■	■
73	00.116.207	81 32301 0444	1295 332 053	Carrier Crown 83 T.	1	I&II&III		■		
73	00.151.207	81 32301 0604	1295 332 086	Carrier Crown 86 T.	1	IV		■		
73	00.151.307	81 32301 0691	1297 332 080	Carrier Crown 83 T.	1	II&III			■	■
73	00.151.207	81 32301 0604	1295 332 086	Carrier Crown 86 T.	1	IV&V			■	■
74	00.151.304	81 32403 0052	1295 332 021	Intermediate Carrier 83 T.	1	I&II&III		■		
74	00.191.304	81 32403 0070	1297 332 035	Intermediate Carrier 86 T.	1	IV		■		
74	00.191.204	81 32403 0057	1297 332 017	Intermediate Carrier 83 T.	1	II&III			■	■
74	00.191.304	81 32403 0070	1297 332 035	Intermediate Carrier 86 T.	1	IV&V			■	■
74	00.151.204	81 37511 0007	1297 332 120	Intermediate Carrier 86 T.	1	V	(i)			■
75	00.151.290	81 90820 0284	0730 505 055	Lock Ring	1	I&II&III		■		
75	00.151.190	81 90820 0371	0730 505 056	Lock Ring	1	IV		■		
75	00.151.290	81 90820 0284	0730 505 055	Lock Ring	1	II&III			■	■
75	00.151.190	81 90820 0371	0730 505 056	Lock Ring	1	IV&V			■	■
76	00.113.204	81 32312 0708	1297 332 002	Ring Gear	1	IV		■		
76	00.113.204	81 32312 0708	1297 332 002	Ring Gear	1				■	■
77		06 31429 0075	0750 116 166	Bearing D.75x105x16	1	I&II&III		■		
77		81 93410 0083	0750 116 165	Bearing D.80x110x16	1	IV		■		
77		81 93410 0083	0750 116 165	Bearing D.80x110x16	1				■	■

**Special for MAN**

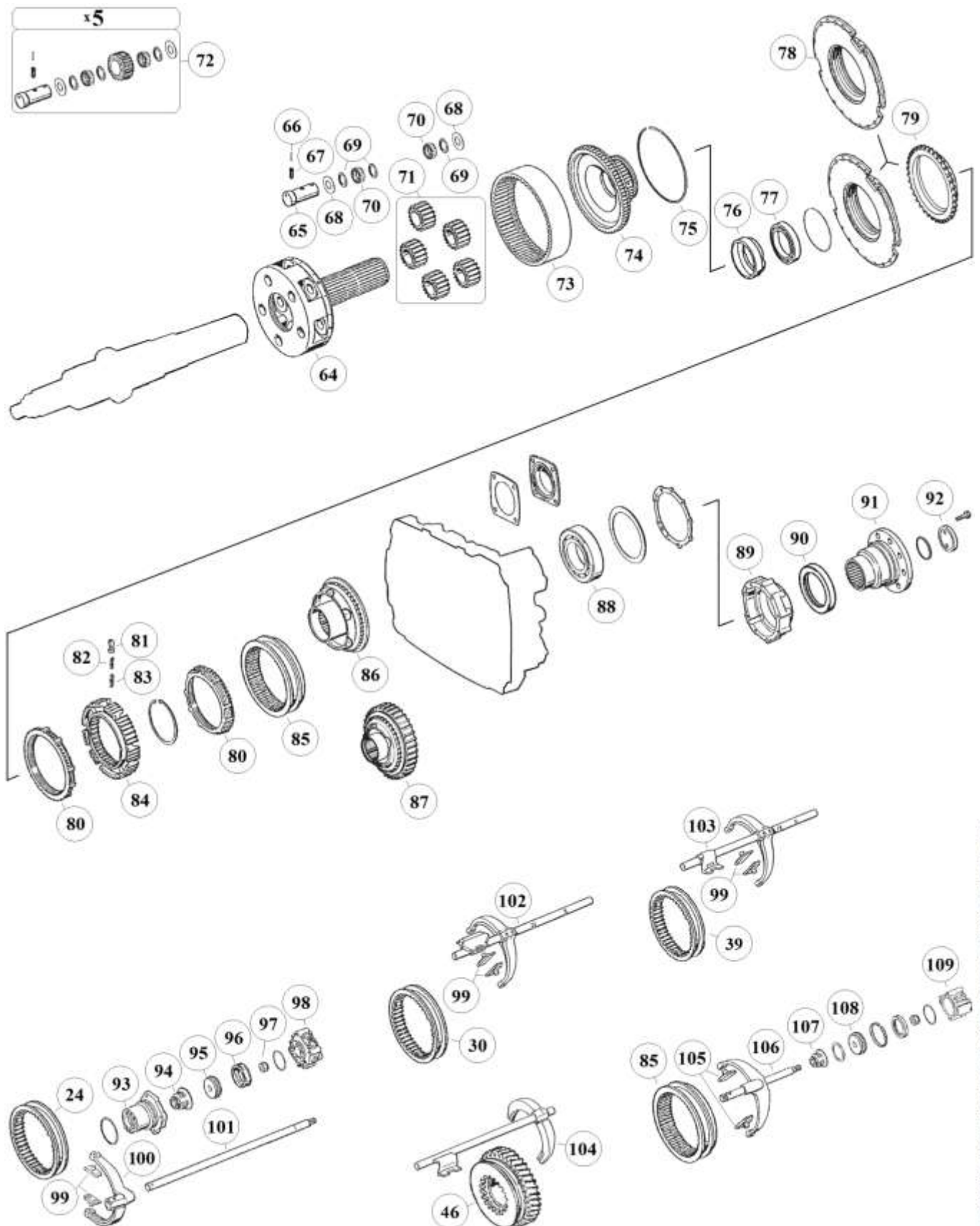
The stated names, reference numbers, symbols, pictures, models and descriptions of truck manufacturers serve only for comparison purposes. It is by no means allowed to use as some original reference towards vehicle owners.

**NOTES:**

(i)	New. Use Items marked (i) together	(k)	Only with Output Flange 1295 238 00
-----	------------------------------------	-----	-------------------------------------

# HIGH END GEARS

## Parts for gearbox: 16S130,160,190



The stated names, reference numbers, symbols, pictures, models and descriptions of truck manufacturers serve only for comparison purposes. It is by no means allowed to use as some original reference towards vehicle owners.

### RATIOS:

16S130 (1295)	I: 10,14 - 0,72	II: 11,46 - 0,85	III: 13,68 - 1,00	IV: 14,29 - 0,82	
16S160 (1297)		II: 11,46 - 0,85	III: 13,68 - 1,00	IV: 14,29 - 0,82	V: 17,06 - 1,00
16S190 (1297)		II: 11,46 - 0,85	III: 13,68 - 1,00	IV: 14,29 - 0,82	V: 17,06 - 1,00



Fig.	MAET-No.	MAN-No.	ZF-No.	DESCRIPTION	Q-Ty.	Ratio	Note			
								16S130 (1295)	16S160 (1297)	16S190 (1297)
77			0635 338 035	Bearing D.100x125x13	1		(i)			
78	00.116.008	81 32425 0073	1296 233 006	Coupling Flange	1					
79	00.151.213	81 32425 0141	1296 333 050	Coupling Body	1					
80	00.112.210	81 32420 0096	1296 333 022	Synchronizer Ring	2		old			
80	00.151.210	81 32420 0236	1296 333 045	Synchronizer Ring	2		new			
81	00.168.075	81 32510 0005	1240 304 278	Pressure Block	9					
82	00.168.074	81 97601 0758	0732 040 386	Pressure Spring D.3x34	9					
83	00.168.076	81 97601 0757	0732 040 385	Pressure Spring D.6x34	9					
84	00.116.004	81 32420 0095	1296 333 002	Synchronizer Hub	1					
84	00.151.411	81 32420 0159	1297 333 115	Synchronizer Hub	1		(i)			
85	00.116.003	81 32402 0111	1296 333 023	Sliding Sleeve	1					
86	00.112.213	81 32425 0074	1295 233 025	Coupling Body (36 Spl.)	1	I&II&III				
86	00.116.213	81 32425 0083	1313 233 001	Coupling Body (38 Spl.)	1	IV				
86	00.116.213	81 32425 0083	1313 233 001	Coupling Body (38 Spl.)	1					
86	00.151.513	81 32425 0100	1297 233 056	Coupling Body (41 Spl.)	1		(i)			
87			1297 333 117	Retarder Gear	1	I&II&III	w. Ret.			
87		81 32301 0809	1297 333 118	Retarder Gear	1	IV	w. Ret.			
87		82 32301 0809	1298 333 118	Retarder Gear	1		w. Ret.			
88		81 93410 0046	0750 116 002	Bearing D.90x160x30	1					
89	00.116.604	81 32106 0072	1296 301 067	Cover	1					
89		81 32106 0152	1315 301 220	Cover	1					
89	00.116.604	81 32106 0072	1296 301 067	Cover	1					
89		81 32106 0152	1315 301 220	Cover	1		(i)			
90		81 96503 0236	0750 111 341	Oil Seal D.105x130x12	1					
91			1295 238 003	Output Flange D.165-8 H	1	I&II&III				
91	00.113.065	81 39115 0215	1295 338 061	Output Flange D.180-4 H.	1	I&II&III				
91	00.113.165	81 39115 0171	1295 338 014	Output Flange D.180-10 H	1	I&II&III				
91	00.113.215	81 39115 0214	1295 338 059	Output Flange D.180-10 H.	1	I&II&III				
91			1295 338 016	Output Flange D.204-4 H.	1	I&II&III				
91			1295 338 028	Output Flange D.204-4 H.	1	I&II&III				
91	00.151.065	81 39115 0224	1297 338 041	Output Flange D.180-4 H.	1	IV				
91	00.151.165	81 39115 0178	1297 338 010	Output Flange D.180-10 H.	1	IV				
91	00.151.065	81 39115 0224	1297 338 041	Output Flange D.180-4 H.	1					
91	00.116.065	81 39115 0213	1297 338 038	Output Flange D.180-10 H.	1					
91	00.151.165	81 39115 0178	1297 338 010	Output Flange D.180-10 H.	1					
91		81 39115 0289	1297 333 110	Output Flange D.180-4 H.	1					
92		81 32312 0820	1295 332 051	Thrust Washer	1					
92			1295 332 064	Thrust Washer	1		(k)			
92		81 90713 0154	1312 332 028	Thrust Washer	1		(i)			
93		81 32638 0005	1296 312 042	Cylinder	1					
94		81 96401 0148	0750 112 034	Cap Collar D.25x38x14,2	1					
95		81 32639 0014	1296 312 053	Piston	1					
96		81 96503 0019	0750 112 089	Ring D.53x63x16,2	1					
97		81 90501 0188	0737 006 095	Nut	1					
98		81 52170 6091	0750 132 032	Cylinder	1					
98		81 52170 6095	0750 132 033	Cylinder	1					
98		81 52170 6067	1295 212 008	Cylinder	1					
98		81 52170 6075	1295 212 009	Cylinder	1					
99	00.110.035	81 32526 0029	1295 306 132	Sliding Pads (Bronze)	2					

Special for MAN

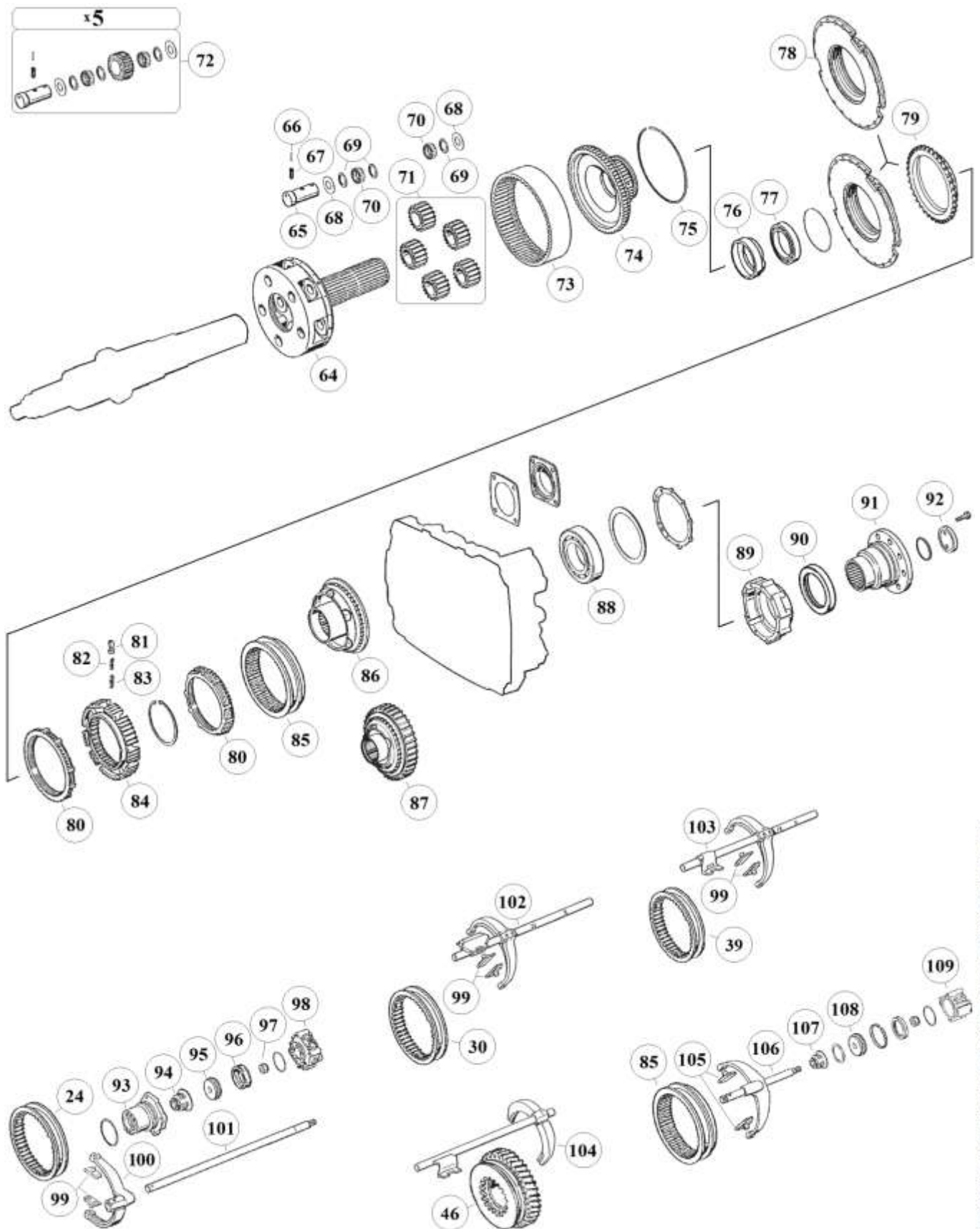
The stated names, reference numbers, symbols, pictures, models and descriptions of truck manufacturers serve only for comparison purposes. It is by no means allowed to use as some original reference towards vehicle owners.

NOTES:

(i)	New. Use Items marked (i) together	(k)	Only with Output Flange 1295 238 00
-----	------------------------------------	-----	-------------------------------------

# HIGH END GEARS

## Parts for gearbox: 16S130,160,190



The stated names, reference numbers, symbols, pictures, models and descriptions of truck manufacturers serve only for comparison purposes. It is by no means allowed to use as some original reference towards vehicle owners.

### RATIOS:

16S130 (1295)	I: 10,14 - 0,72	II: 11,46 - 0,85	III: 13,68 - 1,00	IV: 14,29 - 0,82	
16S160 (1297)		II: 11,46 - 0,85	III: 13,68 - 1,00	IV: 14,29 - 0,82	V: 17,06 - 1,00
16S190 (1297)		II: 11,46 - 0,85	III: 13,68 - 1,00	IV: 14,29 - 0,82	V: 17,06 - 1,00



Fig.	MAET-No.	MAN-No.	ZF-No.	DESCRIPTION	Q-Ty.	Ratio	Note	16S130 (1295)	16S160 (1297)	16S190 (1297)
100		81 32516 0119	1313 312 002	Fork	1			■	■	■
101		81 32518 0106	1295 312 018	Shifting Rod	1			■		
101		81 32518 0132	1297 312 008	Shifting Rod	1				■	■
102			1295 206 219	Fork	1			■		
102		81 32518 6024	1295 206 212	Fork	1			■		
102		81 32518 6023	1295 206 213	Fork	1			■		
102			1297 206 103	Fork	1				■	■
102		81 32518 6037	1297 206 104	Fork	1				■	■
102			1297 206 192	Fork	1					■
103			1295 206 223	Fork	1			■		
103			1295 206 217	Fork	1			■		
103		81 32518 6028	1295 206 214	Fork	1			■		
103		81 32518 0128	1295 206 215	Fork	1			■		
103			1297 206 106	Fork	1				■	■
103		81 32518 6038	1297 206 105	Fork	1				■	■
103			1297 206 191	Fork	1					■
104			1295 206 250	Fork	1			■		
104			1295 206 249	Fork	1			■		
104		81 32518 0142	1295 206 255	Fork	1			■		
104		81 32518 0173	1295 206 254	Fork	1			■		
104			1295 206 059	Fork	1			■		
104		81 32518 0146	1297 206 174	Fork	1				■	■
104		81 32518 6039	1297 206 175	Fork	1				■	■
104			1297 206 181	Fork	1					■
105	00.151.280	81 32526 0026	1296 334 004	Sliding Pads (Bronze)	2			■	■	■
106		81 32518 6042	1312 234 002	Fork	1			■	■	■
107		81 96401 0148	0750 112 034	Cap Collar D.25x38x14,2	1			■	■	■
108	99002013	81 32639 0019	1296 334 039	Piston	1			■	■	■
108		81 32639 0031	1297 334 056	Piston	1		(i)			■
109	00.151.193	81 32638 0006	1295 334 075	Cylinder	1			■	■	■
109		81 32638 0014	1297 334 055	Cylinder	1		(i)			■

**Special for MAN**

The stated names, reference numbers, symbols, pictures, models and descriptions of truck manufacturers serve only for comparison purposes. It is by no means allowed to use as some original reference towards vehicle owners.

NOTES:

(i)	New. Use Items marked (i) together	(k)	Only with Output Flange 1295 238 00
-----	------------------------------------	-----	-------------------------------------

# HIGH END GEARS