

Suitable to:

ZF 16S151 EcoSplit III

ZF 16S181 EcoSplit III

ZF 16S221 EcoSplit III

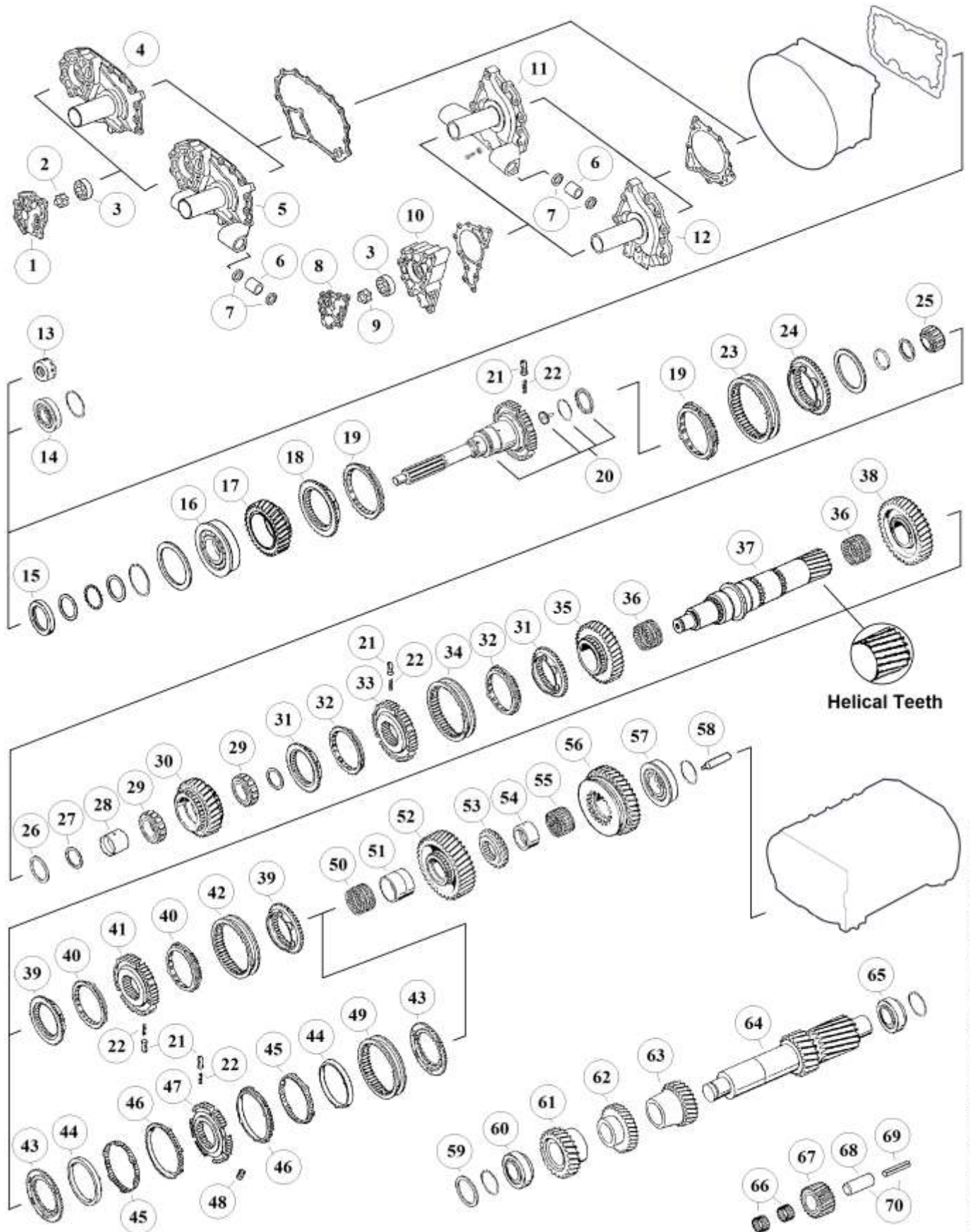
ZF 16S251 EcoSplit III

with HELICAL TEETH Mainshaft

MAN

HIGH END GEARS

Parts for gearbox:
16S151,181,221,251



The stated names, reference numbers, symbols, pictures, models and descriptions of truck manufacturers serve only for comparison purposes. It is by no means allowed to use as some original reference towards vehicle owners.

RATIOS:

16S151	I: 13,74 - 0,84	II: 13,80 - 0,84	III: 16,41 - 1,00
16S181	I:	II: 13,80 - 0,84	III: 16,41 - 1,00
16S221	I: 13,74 - 0,84	II: 13,80 - 0,84	III: 16,41 - 1,00
16S251	I:	II: 13,80 - 0,84	III:

Fig.	MAET-No.	M.A.N.-No.	ZF-No.	DESCRIPTION	Q-ty.	Ratio	Note				
								16S151 (1315)	16S181 (1316)	16S221 (1316)	16S251 (1316)
1		81 38521 0002	1315 302 013	Cover	x 1			■		■	
2		81 33208 0023	1315 202 014	Oil Pump Gear	x 1			■		■	
3		81 33223 0010	1315 303 027	Oil Pump Hub	x 1			■	■	■	■
4		81 32240 0012	1315 302 045	Front Cover	x 1			■		■	
4			1315 302 047	Front Cover	x 1			■		■	
5		81 32240 0035	1315 302 057	Front Cover	x 1			■		■	
6		81 93021 0330	0730 260 398	Bushing	x 4			■		■	■
7		81 96503 0293	0501 312 738	Oil Seal 30x37x4	x 4			■		■	■
8		81 38521 0004	1315 302 120	Cover	x 1			■		■	■
9		81 33208 0025	1314 202 039	Oil Pump Gear	x 1			■		■	
10		81 38520 0003	1315 302 121	Oil Pump Housing	x 1			■		■	■
11			1315 302 075	Front Cover	x 1			■		■	
11		81 32240 0021	1315 302 136	Front Cover	x 1			■		■	
12			1315 202 055	Front Cover	x 1			■		■	
12			1315 202 058	Front Cover	x 1			■		■	
12		81 32240 6000	1315 202 061	Front Cover	x 1			■		■	
12			1315 202 065	Front Cover	x 1			■		■	■
12		81 32240 0020	1315 202 060	Front Cover	x 1			■		■	
13		81 32310 0001	4130 309 063	Disk	x 1		(a)	■		■	■
14		06 32739 0002	0635 450 098	Bearing D.52x90x33	x 1		(b)	■	■	■	
15		81 96503 0342	0734 310 386	Oil Seal D.55x75x8	x 1			■		■	■
15		81 96502 0403	0734 310 104	Oil Seal D.52x68x8	x 1		(a)	■		■	
15		81 96503 0319	0734 319 514	Oil Seal D.52x72x8	x 1		(b)	■	■	■	
16		81 93420 0329	0750 117 732	Bearing D.85x150x30,50	x 1			■	■	■	■
17	00.151.012	81 32302 0027	1315 302 173	Constant Gear 34 T.	x 1	I		■		■	
17	00.151.512	81 32302 0051	1315 302 158	Constant Gear 35 T.	x 1	II		■		■	
17	00.151.612	81 32302 0046	1315 302 157	Constant Gear 30 T.	x 1	III		■		■	
17	00.151.812	81 32302 0068	1316 302 057	Constant Gear 35 T.	x 1	II			■		
17	00.151.104	81 32302 0047	1316 302 066	Constant Gear 30 T.	x 1	III			■		
17	00.151.004	85 32301 0001	1316 302 065	Constant Gear 34 T.	x 1	I				■	
17	00.151.712	81 32302 0031	1316 302 067	Constant Gear 35 T.	x 1	II				■	■
17	00.151.104	81 32302 0047	1316 302 066	Constant Gear 30 T.	x 1	III				■	
18	00.151.006	81 32425 0092	1312 304 027	Coupling Body	x 1			■	■	■	■
19	00.151.054	81 32420 0146	1297 304 402	Synchronizer Ring	x 2		old	■	■	■	■
19	00.151.154	81 32420 0230	1297 304 484	Synchronizer Ring	x 2		new	■	■	■	■
20	00.151.101	81 32205 0267	1315 202 037	Input Shaft	x 1			■		■	
20	00.151.801		1315 202 040	Input Shaft	x 1			■		■	
20		81 32205 0260	1315 202 048	Input Shaft	x 1			■		■	
20			1315 221 002	Input Shaft	x 1			■		■	
20	00.151.001	85 32205 0001	1316 202 025	Input Shaft	x 1				■	■	■
20	00.151.701		1316 202 026	Input Shaft	x 1				■	■	■
20			1316 202 033	Input Shaft	x 1				■	■	■
20			1316 202 038	Input Shaft	x 1				■	■	■
20			1316 221 017	Input Shaft	x 1				■	■	■
21	00.151.080	81 32510 0013	1297 304 436	Pressure Block	x 3			■	■	■	■
22	00.175.205	81 97601 0895	0732 040 409	Pressure Spring D.6,50x23,50	x 3			■	■	■	■
23	00.151.028	81 32402 0197	1310 304 202	Sliding Sleeve	x 1			■	■	■	■
24	00.151.008	81 32425 0093	1312 304 056	Coupling Body	x 1			■	■	■	■
25		81 93501 0080	0750 117 232	Roller Cage D.42x40,30	x 1			■		■	

Special for MAN

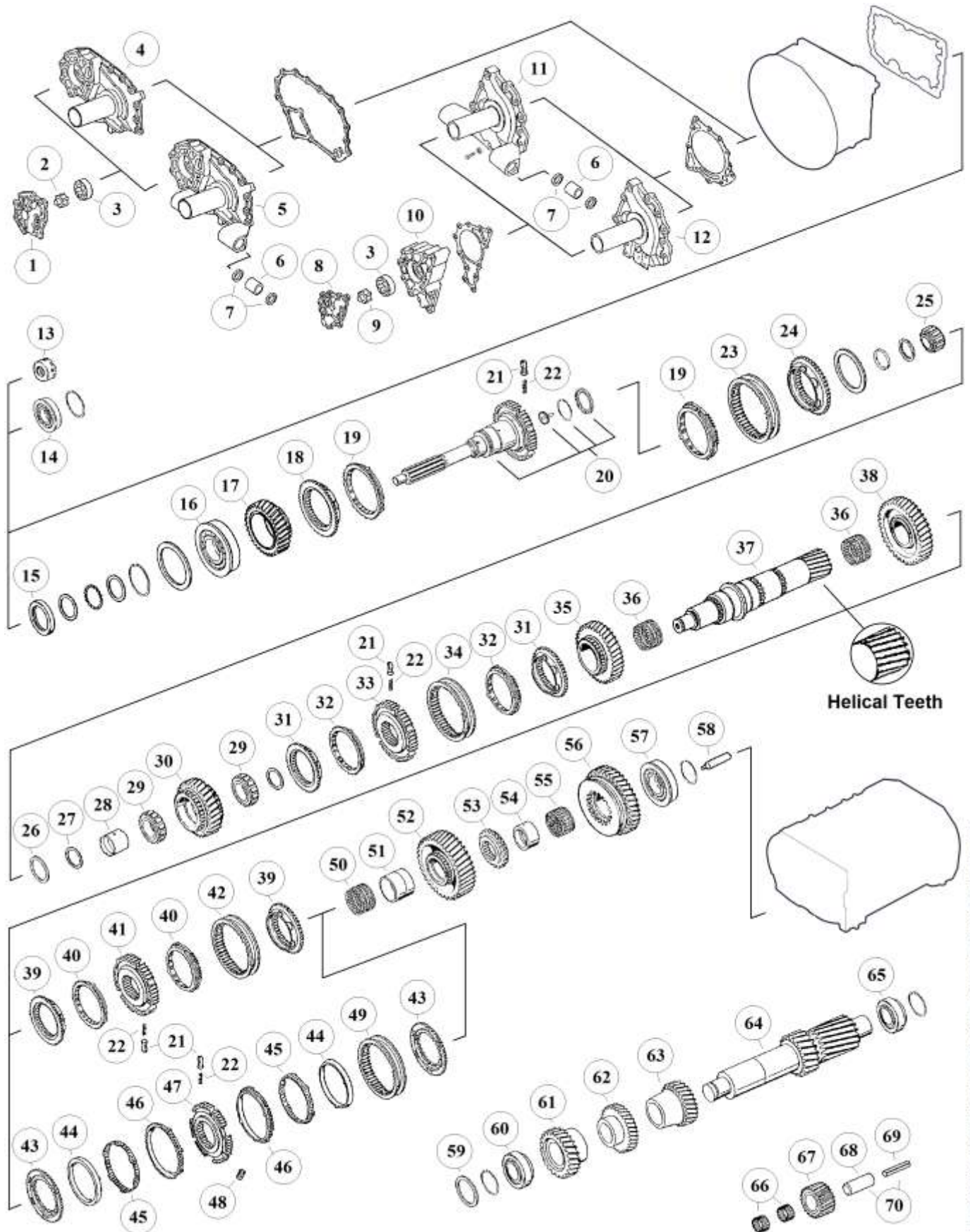
The stated names, reference numbers, symbols, pictures, models and descriptions of truck manufacturers serve only for comparison purposes. It is by no means allowed to use as some original reference towards vehicle owners.

NOTES:

(a)	Only for Input Shaft 1315 202 048 & 1316 202 033
(b)	Only for Input Shaft 1315 221 002 & 1316 221 017
(Y)	DO NOT MIX the two different version. Use the Synchro Rebuilt Kit 1315 298 061
(Z)	DO NOT MIX the two different version. Use the Synchro Rebuilt Kit 1315 298 060
(*)	DO NOT MIX Single Cone Synch. with Double Cone Synch. New Models Only

HIGH END GEARS

Parts for gearbox:
16S151,181,221,251



The stated names, reference numbers, symbols, pictures, models and descriptions of truck manufacturers serve only for comparison purposes. It is by no means allowed to use as some original reference towards vehicle owners.

RATIOS:

16S151	I: 13,74 - 0,84	II: 13,80 - 0,84	III: 16,41 - 1,00
16S181	I:	II: 13,80 - 0,84	III: 16,41 - 1,00
16S221	I: 13,74 - 0,84	II: 13,80 - 0,84	III: 16,41 - 1,00
16S251	I:	II: 13,80 - 0,84	III:

Fig.	MAET-No.	M.A.N.-No.	ZF-No.	DESCRIPTION	Q-ty.	Ratio	Note				
								16S151 (1315)	16S181 (1316)	16S221 (1316)	16S251 (1316)
26		81 32313 0302	1315 304 048	Ring S.8,00 mm	x 1			■	■	■	■
26		81 32313 0263	1315 304 043	Ring S.7,50 mm	x 1			■	■	■	■
27		81 32313 0322	0750 101 158	Thrust Washer 81,5x5	x 2			■	■	■	■
28		81 37260 0007	0750 119 125	Bushing D.67x77x54,1	x 1			■			
28		81 37260 0006	0750 119 124	Bushing D.67x77x66,10	x 1				■	■	■
29		81 93404 0062	0750 115 534	Roller Cage D.77x101x29	x 2			■			
29		81 93404 0061	0750 115 531	Roller Cage D.77x101x29	x 2				■	■	■
30	00.151.014	81 32301 0860	1315 304 017	Gear 4th sp. 30 T.	x 1	I		■			
30	00.151.114	81 32302 0059	1315 304 089	Gear 4th sp. 32 T.	x 1	II&III		■			
30	00.151.003	81 32301 0869	1316 304 007	Gear 4th sp. 30 T.	x 1	I				■	
30	00.151.514	81 32302 0035	1316 304 103	Gear 4th sp. 32 T.	x 1	II&III			■	■	■
31	00.151.006	81 32425 0092	1312 304 027	Coupling Body	x 2			■	■	■	■
31	00.151.268		1316 304 145	Coupling Body	x 2			■	■	■	■
31	00.151.468		1316 304 159	Coupling Body w. oil holes	x 2		(Y)	■	■	■	■
32	00.151.054	81 32420 0146	1297 304 402	Synchronizer Ring	x 2		old	■	■	■	■
32	00.151.154	81 32420 0230	1297 304 484	Synchronizer Ring	x 2		new	■	■	■	■
32	00.151.254		1316 304 149	Synchronizer Ring	x 2		(Y)	■	■	■	■
33	00.151.032	81 32420 0151	1312 304 052	Synchronizer Hub	x 1			■	■	■	■
33	00.151.253		1316 304 162	Synchronizer Hub	x 1		(Y)	■	■	■	■
34	00.151.028	81 32402 0197	1310 304 202	Sliding Sleeve	x 1			■	■	■	■
34	00.151.251		1315 304 135	Sliding Sleeve	x 1		(Y)	■	■	■	■
35	00.151.031	81 32301 0862	1315 304 028	Gear 3rd sp. 32 T.	x 1	I		■			
35	00.151.131	81 32302 0058	1315 304 027	Gear 3rd sp. 34 T.	x 1	II&III		■			
35	00 151 531	81 32302 0072	1316 304 094	Gear 3rd sp. 34 T.	x 1	II&III			■		
35	00.151.016	81 32301 0870	1316 304 009	Gear 3rd sp. 32 T.	x 1	I				■	
35	00.151.431	81 32302 0080	1316 304 008	Gear 3rd sp. 34 T.	x 1	II&III				■	
35	00.151.631	81 32301 0995	1316 304 066	Gear 3rd sp. 34 T.	x 1	II					■
36		81 93402 0108	0735 321 087	Needle Cage D.92x100x53	x 2			■			
36		81 93402 0115	0750 115 303	Needle Cage D.92x100x63	x 2				■	■	■
37	00.151.015	81 32202 0101	1315 304 131	Main Shaft	x 1			■			
37	00.151.315	81 32202 0100	1316 304 132	Main Shaft	x 1				■	■	
37	00.151.615	81 32202 0099	1316 304 131	Main Shaft	x 1						■
42	00.151.022	81 32301 0861	1315 304 026	Gear 2nd sp. 37 T.	x 1	I		■			
38	00.151.122	81 32302 0055	1315 304 025	Gear 2nd sp. 38 T.	x 1	II&III		■			
38	00.151.522	81 32301 0868	1316 304 003	Gear 2nd sp. 37 T.	x 1	I				■	
38	00.151.422	81 32302 0071	1316 304 002	Gear 2nd sp. 38 T.	x 1	II&III			■	■	■
39	00.151.052	81 32425 0094	1313 304 009	Coupling Body	x 2		(*)	■	■	■	■
39	00.151.368		1316 304 156	Coupling Body	x 2		(Z)	■	■	■	■
40	00.151.049	81 32420 0148	1297 304 401	Synchronizer Ring	x 2		(*) old	■	■	■	■
40	00.151.149	81 32420 0241	1297 304 485	Synchronizer Ring	x 2		(*) new	■	■	■	■
40	00.151.354		1316 304 150	Synchronizer Ring	x 2		(Z)	■	■	■	■
41	00.151.132	81 32420 0149	1313 304 008	Synchronizer Hub	x 1		(*)	■	■	■	■
41	00.151.353		1316 304 163	Synchronizer Hub	x 1		(Z)	■	■	■	■
42	00.151.051	81 32402 0189	1316 304 078	Sliding Sleeve	x 1		(*)	■	■	■	■
42	00.151.351		1315 304 136	Sliding Sleeve	x 1		(Z)	■	■	■	■
43	00.151.413	81 32425 0103	1312 304 106	Synchronizer Ring Disk	x 2			■	■	■	
44	00.151.068	81 32420 0163	1268 304 424	Intermediate Ring	x 2			■	■	■	
45	00.151.069	81 30120 0051	1268 304 494	Intermediate Synchr. Ring	x 2			■	■	■	
46	00.151.152	81 32420 0161	1268 304 525	Synchronizer Ring	x 2			■	■	■	

Special for MAN

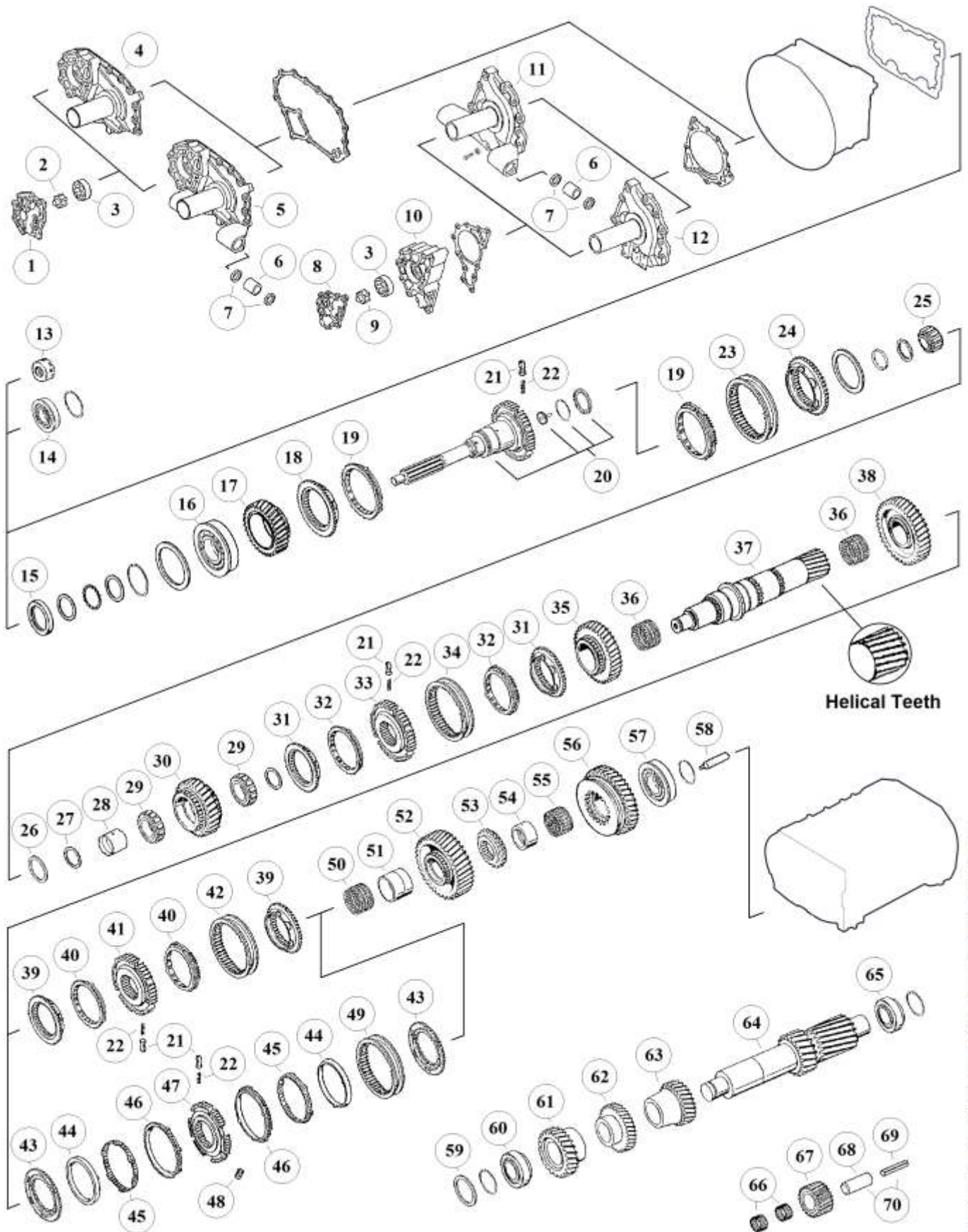
The stated names, reference numbers, symbols, pictures, models and descriptions of truck manufacturers serve only for comparison purposes. It is by no means allowed to use as some original reference towards vehicle owners.

NOTES:

(a)	Only for Input Shaft 1315 202 048 & 1316 202 033
(b)	Only for Input Shaft 1315 221 002 & 1316 221 017
(Y)	DO NOT MIX the two different version. Use the Synchro Rebuilt Kit 1315 298 061
(Z)	DO NOT MIX the two different version. Use the Synchro Rebuilt Kit 1315 298 060
(*)	DO NOT MIX Single Cone Synch. with Double Cone Synch. New Models Only

HIGH END GEARS

Parts for gearbox:
16S151,181,221,251



The stated names, reference numbers, symbols, pictures, models and descriptions of truck manufacturers serve only for comparison purposes. It is by no means allowed to use as some original reference towards vehicle owners.

RATIOS:

16S151	I: 13,74 - 0,84	II: 13,80 - 0,84	III: 16,41 - 1,00
16S181	I:	II: 13,80 - 0,84	III: 16,41 - 1,00
16S221	I: 13,74 - 0,84	II: 13,80 - 0,84	III: 16,41 - 1,00
16S251	I:	II: 13,80 - 0,84	III:

Fig.	MAET-No.	M.A.N.-No.	ZF-No.	DESCRIPTION	Q-ty.	Ratio	Note				
								16S151 (1315)	16S181 (1316)	16S221 (1316)	16S251 (1316)
47	00.151.311	81 32420 0181	1312 304 158	Synchronizer Hub	x 1			■	■	■	
48	00.151.380	81 38108 0005	1312 304 159	Sliding Plate	x 3			■	■	■	
49	00.151.043	81 32402 0191	1310 304 175	Sliding Sleeve	x 1			■	■	■	
50		81 93402 0109	0750 115 325	Needle Cage D.96x104x55	x 1			■			
50		81 93402 0116	0750 115 327	Needle Cage D.96x104x72	x 1				■	■	■
51		81 93021 0106	1313 304 038	Bushing	x 1			■			
51		81 93021 0143	1312 304 084	Bushing D.85x96x72	x 1				■	■	■
52	00.151.034	81 32301 0859	1315 304 014	Gear 1st sp. 44 T.	x 1	I		■			
52	00.151.134	81 32302 0056	1315 304 004	Gear 1st sp. 47 T.	x 1	II&III		■			
52	00.151.534	81 32301 0871	1316 304 013	Gear 1st sp. 44 T.	x 1	I				■	
52	00.151.634	81 32302 0034	1316 304 010	Gear 1st sp. 47 T.	x 1	II&III			■	■	■
53	00.151.038	81 32425 0114	1315 304 018	Follower	x 1			■			
53	00.151.138	81 32425 0117	1312 304 124	Follower	x 1				■	■	■
54		81 93021 0383	1315 304 132	Bushing	x 1			■			
54		81 93021 0388	1316 304 133	Bushing D.80x90x50	x 1				■	■	■
55		81 93402 0110	0750 115 324	Needle Cage D.90x98x41	x 1			■			
55		81 93402 0117	0750 115 326	Needle Cage D.90x98x50	x 1				■	■	■
56	00.151.035	81 32301 0858	1315 304 013	Reverse Gear 42 T.	x 1	I		■			
56	00.151.135	81 32302 0057	1315 304 006	Reverse Gear 44 T.	x 1	II&III		■			
56		81 32301 0872	1316 304 015	Reverse Gear 42 T.	x 1	I				■	
56		81 32301 0994	1316 304 012	Reverse Gear 44 T.	x 1	II&III			■	■	■
57		81 93420 0312	0750 117 677	Bearing D.80x130x36	x 1			■			
57		06 32499 0191	0750 117 678	Bearing D.80x140x36,50	x 1				■	■	■
58		81 32562 0146	1312 304 150	Oil Tube	x 1			■	■	■	
58			1316 304 093	Oil Tube	x 1						■
59		81 32313 0197	0730 106 917	Washer 1 S.3,00 mm	x 1			■	■	■	■
59		81 32313 0177	0730 101 471	Washer 1 S.2,00 mm	x 1			■	■	■	■
60		81 93420 0187	0750 117 009	Bearing D.49,2x103,1x43,6	x 1			■	■	■	
60			0735 371 604	Bearing D.49,2x103,1x43,6	x 1						■
61	00.151.017	81 32302 0002	1315 303 052	Constant Gear 37 T.	x 1	I		■			
61	00.151.117	81 32302 0053	1315 303 051	Constant Gear 32 T.	x 1	II		■			
61	00.151.217		1315 303 008	Constant Gear 39 T.	x 1	III		■			
61		81 32302 0070	1316 303 056	Constant Gear 32 T.	x 1	II			■		
61		81 32302 0076	1316 303 055	Constant Gear 39 T.	x 1	III			■		
61	00.151.013	81 32301 0935	1316 303 031	Constant Gear 37 T.	x 1	I				■	
61	00.151.120	81 32302 0032	1316 303 064	Constant Gear 32 T.	x 1	II				■	■
61		81 32302 0079	1316 303 030	Constant Gear 39 T.	x 1	III				■	
62	00.151.024	81 32301 0856	1315 303 046	Gear 4th sp. 39 T.	x 1	I		■			
62	00.151.124	81 32302 0054	1315 303 050	Gear 4th sp. 35 T.	x 1	II&III		■			
62	00.151.121	81 32302 0077	1316 303 063	Gear 4th sp. 35 T.	x 1	II&III			■		
62	00.151.020	81 32301 0866	1316 303 004	Gear 4th sp. 39 T.	x 1	I				■	
62	00.151.105	81 32302 0033	1316 303 065	Gear 4th sp. 35 T.	x 1	II&III				■	■
63	00.151.025	81 32301 0855	1315 303 010	Gear 3rd sp. 28 T.	x 1	I		■			
63	00.151.125	81 32302 0052	1315 303 004	Gear 3rd sp. 26 T.	x 1	II&III		■			
63	00.151.425	81 32302 0069	1316 303 058	Gear 3rd sp. 26 T.	x 1	II&III			■		
63	00.151.005	81 32301 0867	1316 303 006	Gear 3rd sp. 28 T.	x 1	I				■	
63	00.151.011	81 32302 0078	1316 303 005	Gear 3rd sp. 26 T.	x 1	II&III				■	
63		81 32301 0997	1316 303 040	Gear 3rd sp. 26 T.	x 1	II					■
64	00.151.127	81 32206 0106	1315 303 041	Counter Shaft 19-23 T.	x 1	I		■			

Special for MAN

The stated names, reference numbers, symbols, pictures, models and descriptions of truck manufacturers serve only for comparison purposes. It is by no means allowed to use as some original reference towards vehicle owners.



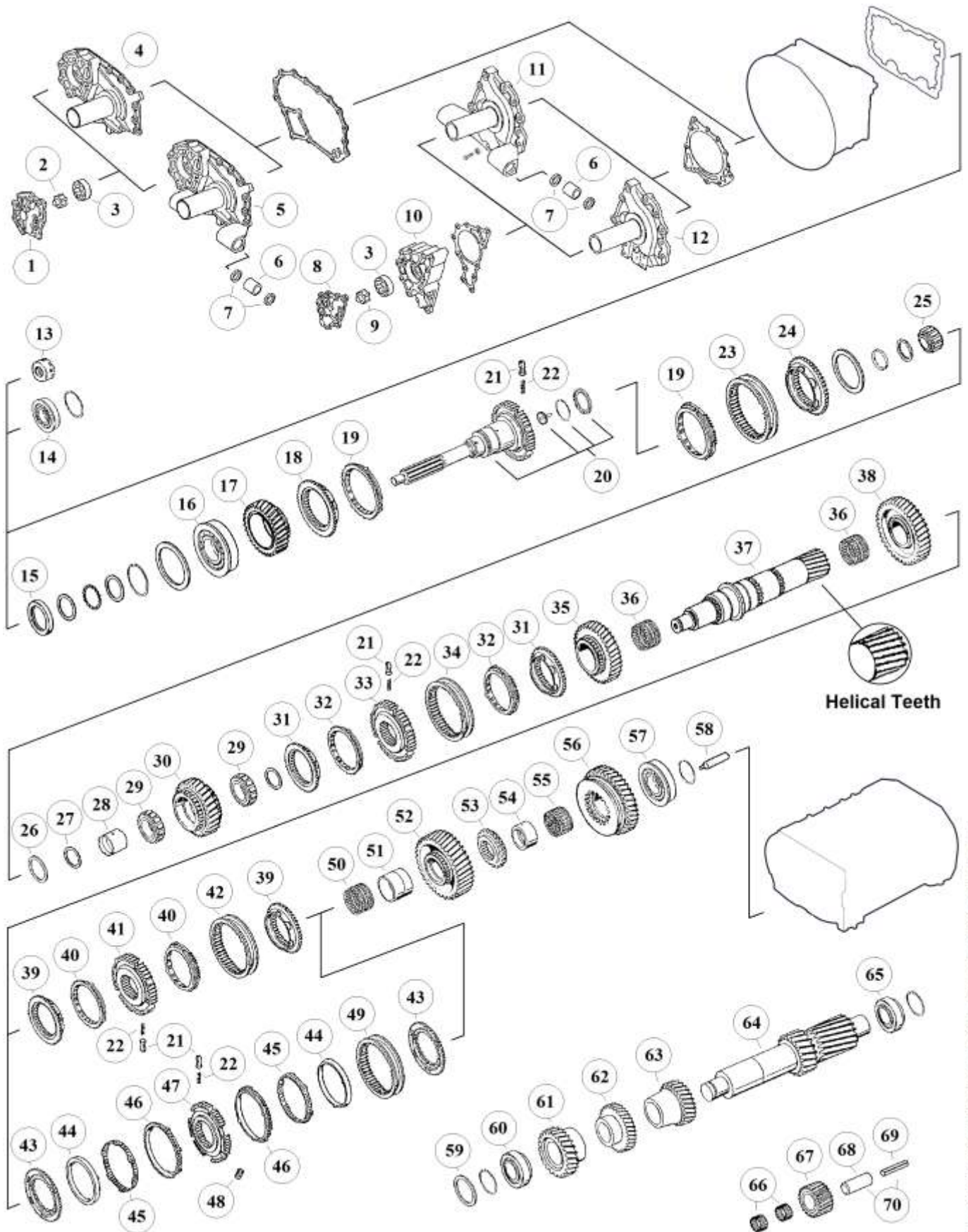
NOTES:

(a)	Only for Input Shaft 1315 202 048 & 1316 202 033
(b)	Only for Input Shaft 1315 221 002 & 1316 221 017
(Y)	DO NOT MIX the two different version. Use the Synchro Rebuilt Kit 1315 298 061
(Z)	DO NOT MIX the two different version. Use the Synchro Rebuilt Kit 1315 298 060
(*)	DO NOT MIX Single Cone Synch. with Double Cone Synch. New Models Only



HIGH END GEARS

Parts for gearbox:
16S151,181,221,251



The stated names, reference numbers, symbols, pictures, models and descriptions of truck manufacturers serve only for comparison purposes. It is by no means allowed to use as some original reference towards vehicle owners.

RATIOS:

16S151	I: 13,74 - 0,84	II: 13,80 - 0,84	III: 16,41 - 1,00
16S181	I:	II: 13,80 - 0,84	III: 16,41 - 1,00
16S221	I: 13,74 - 0,84	II: 13,80 - 0,84	III: 16,41 - 1,00
16S251	I:	II: 13,80 - 0,84	III:

Fig.	MAET-No.	M.A.N.-No.	ZF-No.	DESCRIPTION	Q-ty.	Ratio	Note				
								16S151 (1315)	16S181 (1316)	16S221 (1316)	16S251 (1316)
64	00.151.227	81 32206 0129	1315 303 042	Counter Shaft 17-20 T.	x 1	II&III		■			
64	00.151.019	81 32206 0107	1316 303 034	Counter Shaft 19-23 T.	x 1	I				■	
64	00.151.119	81 32206 0130	1316 303 033	Counter Shaft 17-20 T.	x 1	II&III		■	■		
64		81 32206 0114	1316 303 038	Counter Shaft 17-20 T.	x 1	II					■
65		81 93420 0134	0750 117 011	Bearing D.50,8x104,7x39,6	x 1			■			
65		81 93420 0187	0750 117 009	Bearing D.49,2x103,1x43,6	x 1				■	■	
65			0735 371 604	Bearing D.49,2x103,1x43,6	x 1						■
66		81 93402 0127	0750 115 366	Needle Cage D.45x57x21	x 2			■			
66		81 93402 0128	0750 115 369	Needle Cage D.45x57x25	x 2				■	■	■
67		81 32315 0054	1315 305 005	Reverse Idler Gear 20 T.	x 1	I		■			
67		81 32315 0060	1315 305 002	Reverse Idler Gear 22 T.	x 1	II&III		■			
67		81 32315 0055	1316 305 002	Reverse Idler Gear 20 T.	x 1	I					■
67		81 32315 0058	1316 305 001	Reverse Idler Gear 22 T.	x 1	II&III			■	■	■
68		81 32523 0178	1315 305 009	Reverse Idler Pin	x 1		new	■	■		■
69		06 22120 1229	0631 329 293	Pin	x 1	I	new	■			
69			0631 329 294	Pin	x 1	II&III	new	■			
69		06 22129 0009	0631 329 295	Pin	x 1	I	new				■
69		06 22129 0011	0631 329 296	Pin	x 1	II&III	new		■	■	
69			0631 329 305	Pin	x 1	II	new				■
70			1315 201 054	Reverse Idler Pin (Set)	x 1	I	old	■			
70			1315 201 053	Reverse Idler Pin (Set)	x 1	II&III	old	■			
70			1316 201 030	Reverse Idler Pin (Set)	x 1	I	old				■
70			1316 201 029	Reverse Idler Pin (Set)	x 1	II&III	old		■	■	
70		81 32523 0203	1316 201 075	Reverse Idler Pin (Set)	x 1	II	old				■

Special for MAN

The stated names, reference numbers, symbols, pictures, models and descriptions of truck manufacturers serve only for comparison purposes. It is by no means allowed to use as some original reference towards vehicle owners.

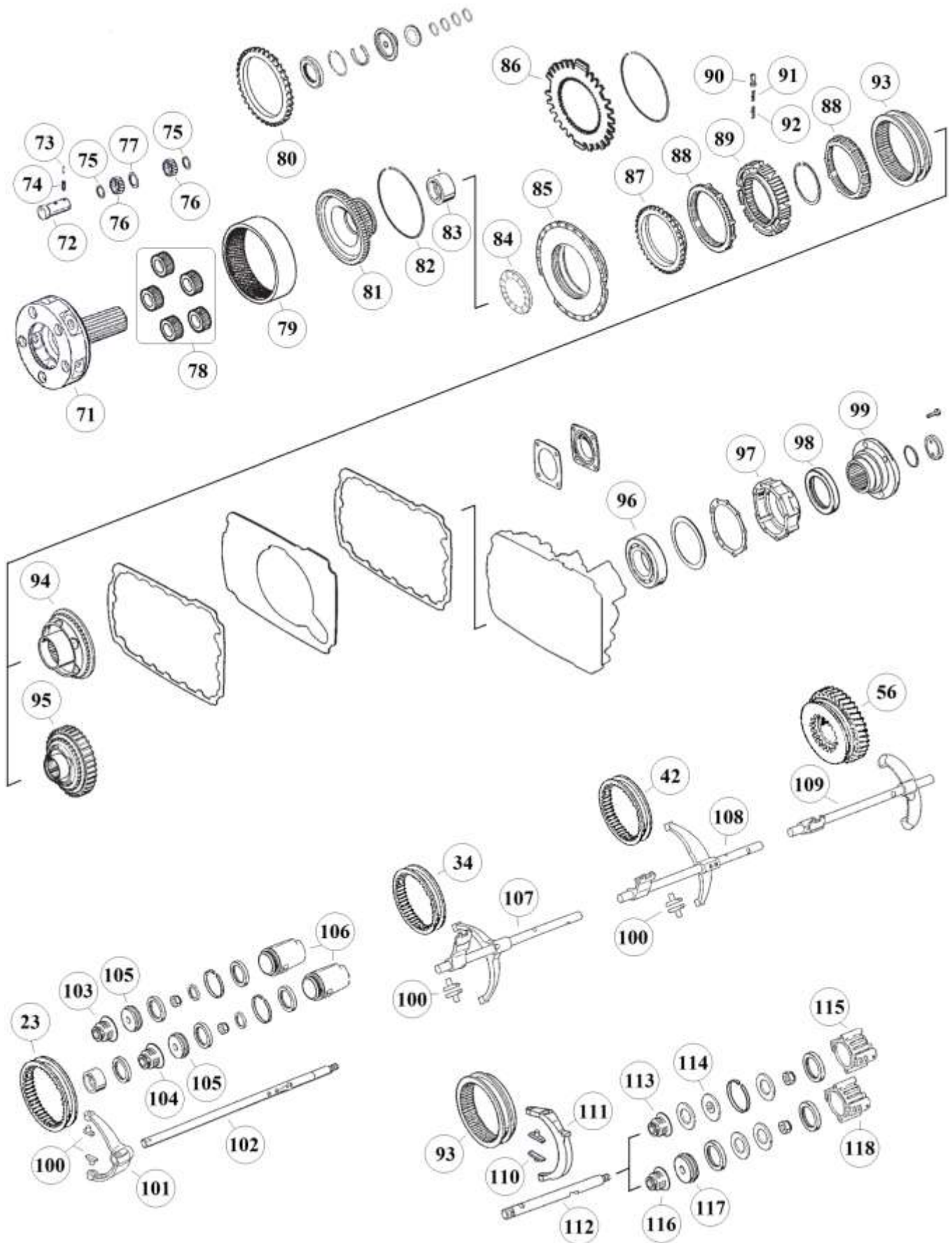


NOTES:

(a)	Only for Input Shaft 1315 202 048 & 1316 202 033
(b)	Only for Input Shaft 1315 221 002 & 1316 221 017
(Y)	DO NOT MIX the two different version. Use the Synchro Rebuilt Kit 1315 298 061
(Z)	DO NOT MIX the two different version. Use the Synchro Rebuilt Kit 1315 298 060
(*)	DO NOT MIX Single Cone Synch. with Double Cone Synch. New Models Only

HIGH END GEARS

Parts for gearbox: 16S151,181,221,251



The stated names, reference numbers, symbols, pictures, models and descriptions of truck manufacturers serve only for comparison purposes. It is by no means allowed to use as some original reference towards vehicle owners.

RATIOS:

16S151	I: 13,74 - 0,84	II: 13,80 - 0,84	III: 16,41 - 1,00
16S181	I:	II: 13,80 - 0,84	III: 16,41 - 1,00
16S221	I: 13,74 - 0,84	II: 13,80 - 0,84	III: 16,41 - 1,00
16S251	I:	II: 13,80 - 0,84	III:

Fig.	MAET-No.	M.A.N.-No.	ZF-No.	DESCRIPTION	Q-ty.	Ratio	Note				
								16S151 (1315)	16S181 (1316)	16S221 (1316)	16S251 (1316)
71		81 37501 0041	1316 232 019	Planet Carrier	x1						
71		81 32403 0107	1315 232 016	Planet Carrier	x1						
71		81 32403 0107	1315 232 016	Planet Carrier	x1		(d)				
71		81 37501 0042	1316 232 021	Planet Carrier	x1						
72		81 32523 0205	1315 332 053	Planet Pin	x5						
72		81 32523 0205	1315 332 053	Planet Pin	x5		(d)				
72		81 32523 0210	1316 332 096	Planet Pin	x5						
72		82 32523 0011	1316 332 097	Planet Pin	x5						
73		06 22120 0513	0631 329 167	Lock Pin D.3x26	x5						
74		06 22120 0913	0631 329 051	Lock Pin D.5x26	x5						
75		81 32313 0114	0730 107 168	Washer	x10						
75		81 32313 0114	0730 107 168	Washer	x10		(d)				
75		81 90713 0986	0730 109 323	Washer	x10						
76		81 93403 0023	0750 119 116	Needle D.10x16,8	x140						
77		81 90714 0147	0730 109 309	Bushing	x5						
77		81 32313 0114	0730 107 168	Bushing	x5						
77		81 32313 0114	0730 107 168	Bushing	x5		(d)				
77		81 37509 0002	0730 162 801	Bushing T.14,90	x5						
78		81 32301 6016	1315 232 010	Planet Gear Set (5 pcs)	x1						
78		81 32301 6016	1315 232 010	Planet Gear Set (5 pcs)	x1		(d)				
78		81 32301 6018	1316 232 011	Planet Gear Set (5 pcs)	x1						
78		81 37505 6010	1316 232 017	Planet Gear Set (5 pcs)	x1						
79		81 32301 0984	1315 332 041	Carrier Crown	x1						
79		81 32301 0991	1316 332 042	Carrier Crown	x1						
80		81 37503 0012	1316 332 044	Ring Gear	x1						
81		81 32403 0108	1316 332 103	Intermediate Carrier	x1						
81		81 32403 0106	1316 332 073	Intermediate Carrier	x1						
82		81 32240 0022	0730 513 583	Lock Ring	x1						
82		81 90820 0535	0730 513 639	Lock Ring	x1						
83		81 32313 0306	1316 333 014	Bushing	x1						
84		81 93401 0062	0735 298 169	Bearing D.104,50x128,40x10	x1						
85	00.151.308	81 30301 4861	1296 333 046	Coupling Flange	x1						
86		81 32425 0155	1316 333 026	Synchronizer Plate	x1						
87	00.151.213	81 32425 0141	1296 333 050	Coupling Body	x1						
88	00.112.210	81 32420 0096	1296 333 022	Synchronizer Ring	x2		old				
88	00.151.210	81 32420 0236	1296 333 045	Synchronizer Ring	x2		new				
89	00.151.211	81 32420 0152	1313 333 001	Synchronizer Hub	x1						
90	00.168.075	81 32510 0005	1240 304 278	Pressure Block	x9						
91	00.168.074	81 97601 0758	0732 040 386	Pressure Spring De.3x34	x9						
92	00.168.076	81 97601 0757	0732 040 385	Pressure Spring De.6x34	x9						
93	00.116.003	81 32402 0111	1296 333 023	Sliding Sleeve	x1						
94	00.151.313	81 32425 0132	1316 233 015	Coupling Body	x1						
95	00.151.613	81 32425 0136	1316 233 014	Retarder Gear 59 T	x1		w. Ret.				
96		81 93410 0046	0750 116 002	Bearing D.90x160x30	x1						
97			1315 231 002	Cover	x1		old				
97			1315 301 220	Cover	x1		new				
98		81 96503 0236	0750 111 341	Oil Seal 105x130x12	x1						
99		81 39115 0289	1297 333 110	Output Flange D.180-4 H.	x1						
99			1316 232 028	Output Flange D.222-4 H	x1						

Special for MAN

The stated names, reference numbers, symbols, pictures, models and descriptions of truck manufacturers serve only for comparison purposes. It is by no means allowed to use as some original reference towards vehicle owners.

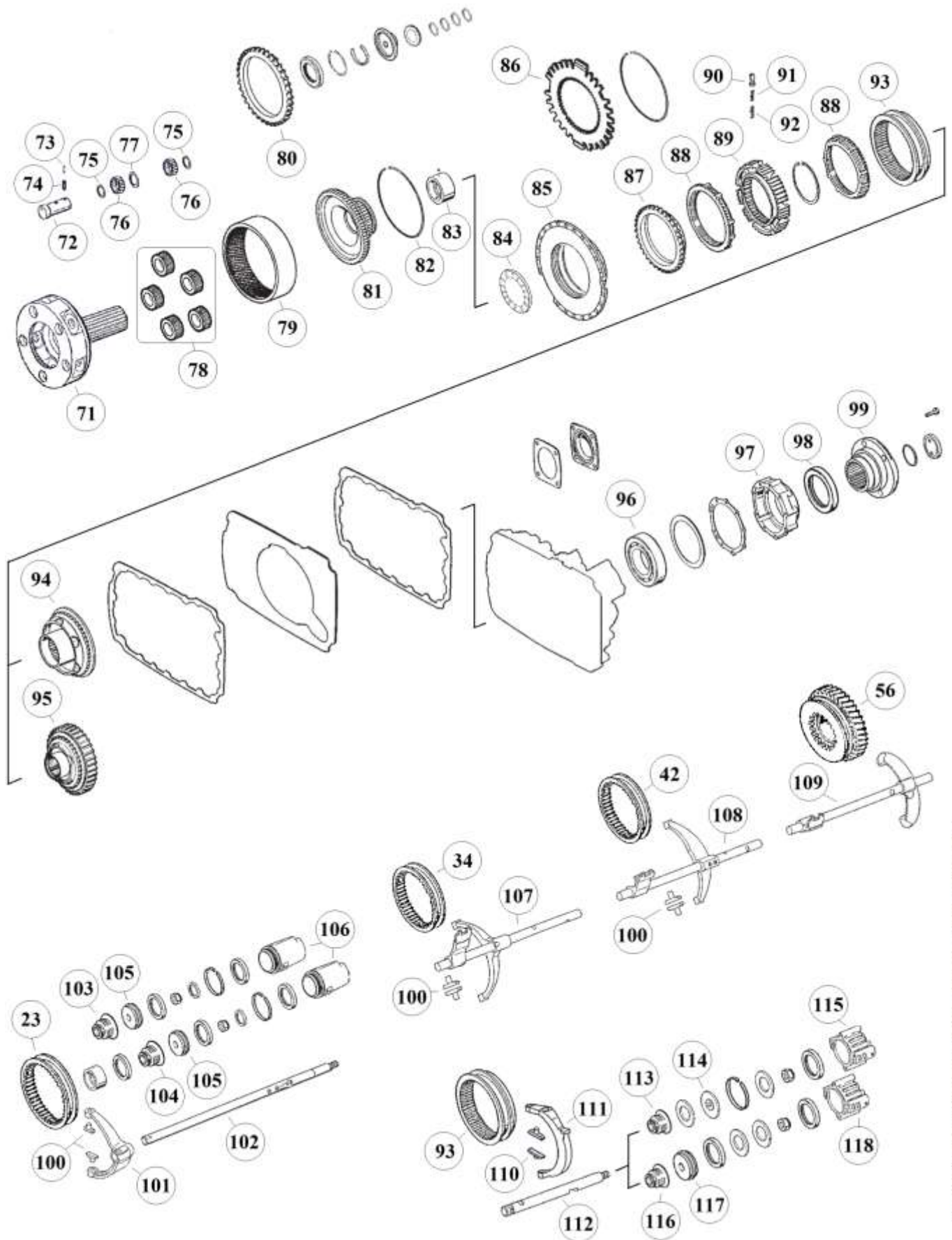
NOTES:

(d)	16S181 Special GP Version. For this version use items marked (c) together
E.T.	Extended Type
L.T.	Latest Type
S.T.	Standard Type



HIGH END GEARS

Parts for gearbox: 16S151,181,221,251



The stated names, reference numbers, symbols, pictures, models and descriptions of truck manufacturers serve only for comparison purposes. It is by no means allowed to use as some original reference towards vehicle owners.

RATIOS:

16S151	I: 13,74 - 0,84	II: 13,80 - 0,84	III: 16,41 - 1,00
16S181	I:	II: 13,80 - 0,84	III: 16,41 - 1,00
16S221	I: 13,74 - 0,84	II: 13,80 - 0,84	III: 16,41 - 1,00
16S251	I:	II: 13,80 - 0,84	III:

Fig.	MAET-No.	M.A.N.-No.	ZF-No.	DESCRIPTION	Q-ty.	Ratio	Note				
								16S151 (1315)	16S181 (1316)	16S221 (1316)	16S251 (1316)
99		81 39115 0381	1316 338 002	Output Flange D.180-4 H	x1						
100	00.151.180	81 32526 0031	1297 306 120	Sliding Pads	x6		old				
100	00.151.480	81 32526 0039	1316 306 015	Sliding Pads	x6		new				
101		81 32516 0125	1315 312 017	Fork	x1		old				
101			1315 312 074	Fork	x1		new				
102		81 32518 0230	1315 312 049	Rod	x1		S. T.				
102		81 32518 0188	1315 312 022	Rod	x1		E. T.				
102		82 32518 0010	1316 312 016	Rod	x1		S. T.				
102		81 32518 0194	1316 312 008	Rod	x1		E. T.				
103		81 96401 0163	0750 112 131	Cap Collar D.25x40x15	x1						
104	99002012	81 96401 0148	0750 112 034	Cap Collar D.25x38x14,2	x1						
105		81 32739 0027	1315 312 020	Piston	x1						
106		81 32638 0032	1315 312 048	Cylinder	x1						
106		81 32638 0037	1316 312 015	Cylinder	x1						
107		81 32518 0186	1315 206 013	Fork	x1		old				
107			1315 206 055	Fork	x1		new				
107			1315 206 024	Fork	x1		old				
107			1315 206 056	Fork	x1		new				
107		81 32518 0193	1316 206 018	Fork	x1		old				
107			1316 206 037	Fork	x1		new				
107			1316 206 017	Fork	x1		old				
107			1316 206 038	Fork	x1		new				
108		81 32518 0231	1315 206 046	Fork	x1		old				
108			1315 206 052	Fork	x1		new				
108			1315 206 047	Fork	x1		old				
108			1315 206 053	Fork	x1		new				
108		81 32518 0234	1316 206 025	Fork	x1		old				
108			1316 206 033	Fork	x1		new				
108			1316 206 026	Fork	x1		old				
108			1316 206 034	Fork	x1		new				
108			1316 206 027	Fork	x1		old				
108			1316 206 035	Fork	x1		new				
109			1315 206 003	Fork	x1						
109		81 32518 0187	1315 206 023	Fork	x1						
109		81 32518 0191	1316 206 013	Fork	x1						
109			1316 206 014	Fork	x1						
110	00.151.280	81 32526 0026	1296 334 004	Sliding Pads	x2						
111		81 32515 0098	1315 334 039	Fork	x1						
112		81 32518 0250	1315 334 058	Rod	x1						
112		81 32518 0218	1316 334 010	Rod	x1						
112			1316 334 011	Rod	x1						
113		81 96401 0163	0750 112 131	Cap Collar D.25x40x15	x1		L. T.				
114		81 32639 0056	1315 334 034	Piston	x1		L. T.				
115		81 32638 0040	1315 334 056	Cylinder	x1		L. T.				
116		81 32518 0218	0750 112 034	Cap Collar D.25x38x14,2	x1		S. T.				
117		81 32639 0019	1296 334 039	Piston	x1		S. T.				

Special for MAN

The stated names, reference numbers, symbols, pictures, models and descriptions of truck manufacturers serve only for comparison purposes. It is by no means allowed to use as some original reference towards vehicle owners.

NOTES:

(d)	16S181 Special GP Version. For this version use items marked (c) together
E.T.	Extended Type
L.T.	Latest Type
S.T.	Standard Type



HIGH END GEARS